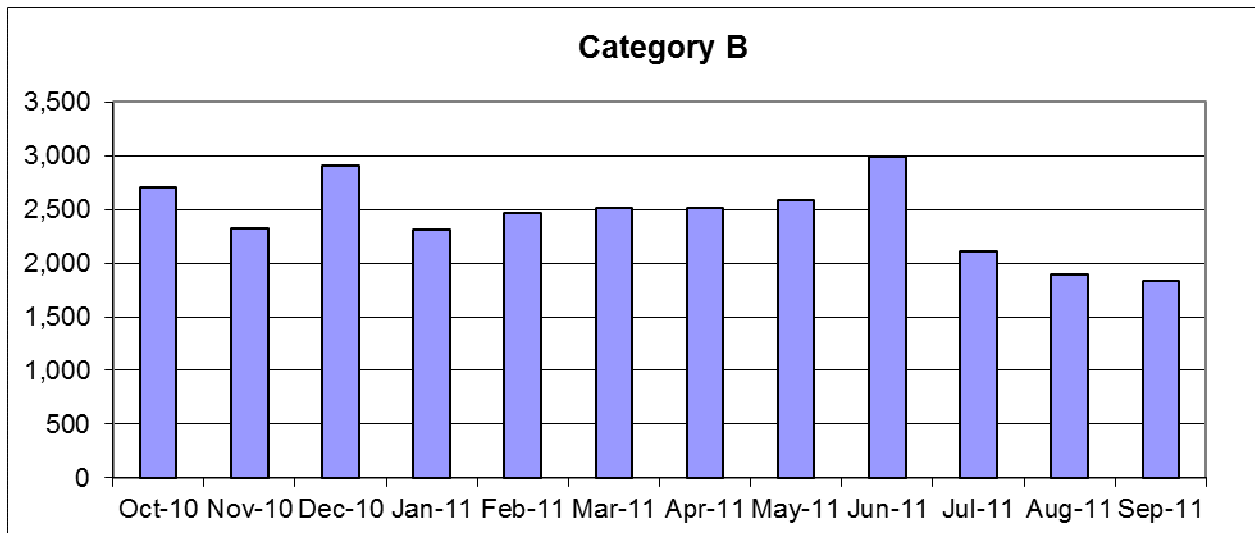




PRESCRIBED INDUSTRIAL WASTE DISPOSED TO LANDFILL MONTH BY MONTH

Category B manufacturing waste disposed to landfill (tonnes)*



**Table: Category B manufacturing waste disposed to landfill
– previous 12 months (tonnes)***

	Oct 2010	Nov 2010	Dec 2010	Jan 2011	Feb 2011	Mar 2011	Apr 2011	May 2011	Jun 2011	Jul 2011	Aug 2011	Sep 2011
All Victorian landfills	2,709	2,318	2,907	2,315	2,468	2,514	2,509	2,590	2,986	2,111	1,891	1,825

* This data is based on information provided to EPA by landfill operators and is subject to change after verification and auditing. Manufacturing wastes are classified as either Category B or Category C based on the hazard posed by the wastes. Hazard categories are defined in Schedule 2 of the Environment Protection (Industrial Waste Resource) Regulations 2009.



Low-hazard (Category C) manufacturing waste disposed to landfill (tonnes)*

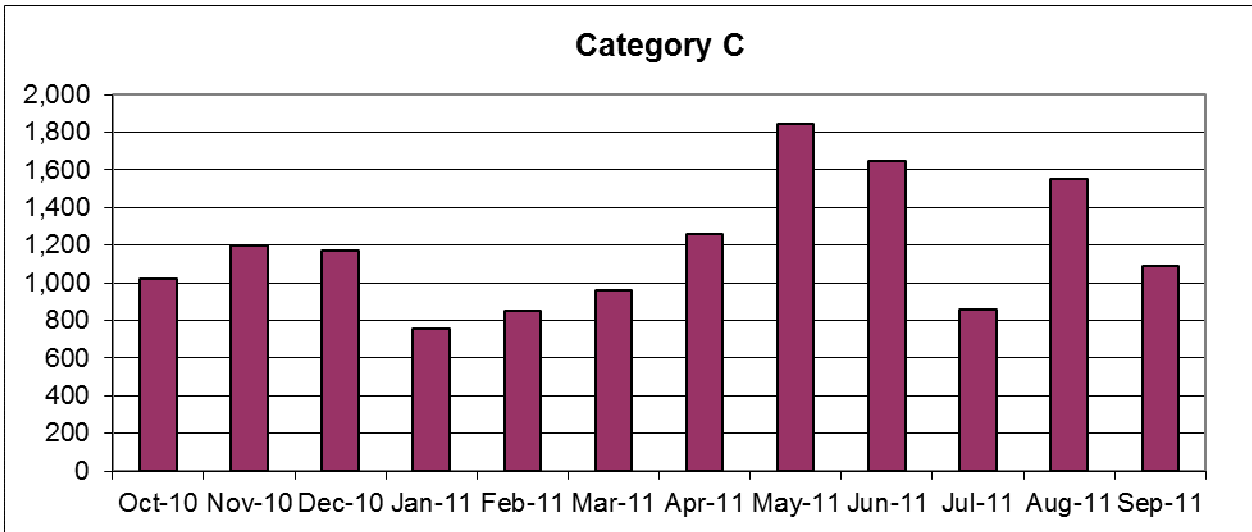


Table: Category C manufacturing waste disposed to landfill – previous 12 months (tonnes)*

	Oct 2010	Nov 2010	Dec 2010	Jan 2011	Feb 2011	Mar 2011	Apr 2011	May 2011	Jun 2011	Jul 2011	Aug 2011	Sep 2011
All Victorian landfills	1,022	1,199	1,169	756	850	962	1,261	1,842	1,649	855	1,553	1,090

* This data is based on information provided to EPA by landfill operators and is subject to change after verification and auditing. Manufacturing wastes are classified as either Category B or Category C based on the hazard posed by the wastes. Hazard categories are defined in Schedule 2 of the Environment Protection (Industrial Waste Resource) Regulations 2009.