



# VICTORIA'S AIR QUALITY 2008

## AIR MONITORING DATA

- Section 1 - Report Card** an assessment of compliance with the air quality goals and objectives
- Section 2 - Trend analysis** an update of the overall trends in air quality in Melbourne
- Section 3 - Monthly Data Tables** tabulated monthly air quality statistics

## Section 1- Report Card

### Compliance with Air Quality Objectives

Assessment of Victoria's air quality on a station-by-station basis

The numbers in the table indicate the number of days the objectives were not met.

Region	Station	Particles			Ozone		NO <sub>2</sub>		CO	SO <sub>2</sub>			
		Visibility	PM <sub>10</sub>	PM <sub>2.5</sub>	1 h	4 h	1 h	24 h	8h	1 h	24 h	1 year	
M E L B O U R N E	City	Richmond	13	5				0	0	0			
		Alphington	15	3	4	0	0	0	0	0	0	0	0
	East	Box Hill	20	4		0	0	0	0	0	0	0	0
		Brighton	16	5		0	0	0	0				
		Dandenong	18	8		0	0	0	0				
		Macleod		2*		0*	0*						
		Mooroolbark	26	10		0	0	0	0	0			
		Altona North				0	0	0	0		0	0	0
	West	Deer Park	12*	7		0	0	0	0				
		Footscray	11	4	3	0	0	0	0	0	0	0	0
		Melton				0*	0*						
		Pt Cook	9			0	2	0	0				
GEELONG	Geelong South	11	6		0	0	0	0	0	0	0	0	
	Pt Henry				0	0							
LATROBE VALLEY	Moe	9	6		0	0	0	0		0	0	0	
	Traralgon	25	2		0	0	0	0		0	0	0	

	Objective and Goal met		Exceeded the Objective, but met the Goal		Goal not Met	*	Insufficient data to demonstrate compliance
--	------------------------	--	--	--	--------------	---	---

\* Monitoring for this pollutant did not meet the data capture target (ie. 75% data capture in each quarter of the year)

On an annual basis, EPA assesses the air quality monitored at each station against the state and national air quality objectives and goals.

The numbers presented in the Table show the number of days that an air quality objective was not met.

Shading is used to indicate the assessment against the goals, with:

- *Green shading* indicating that the 2008 goal was met;
- *Red shading*, that the 2008 goal was not met; and
- *Yellow shading*, that whilst the 2008 goal was met, there were still days when the objective was not met

Monitoring instruments not meeting the data capture target are indicated by an asterisk and cells are not shaded yellow or green.

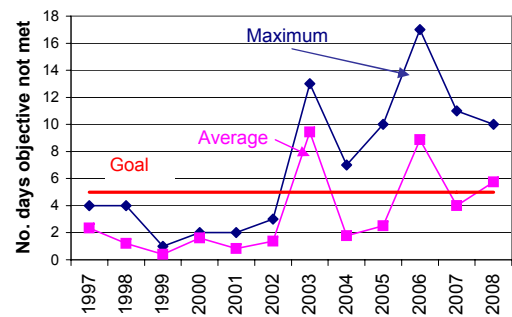
A blank cell indicates that monitoring for a particular pollutant was not performed at this station.

Note, for PM2.5 there is no 2008 goal and monitoring occurs on a one-day-in-three basis.

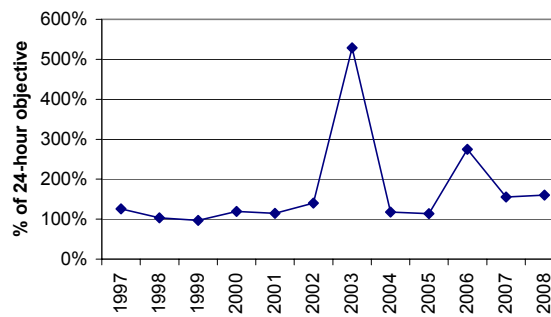
## Section 2 - Trend analysis

### Trends of air quality in Melbourne

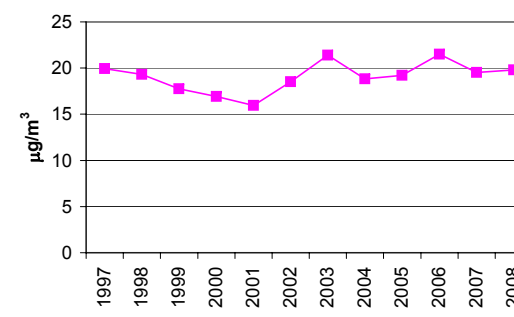
#### 1. Particles smaller than 10µm (PM<sub>10</sub>)



(a) Days not meeting the PM<sub>10</sub> objective

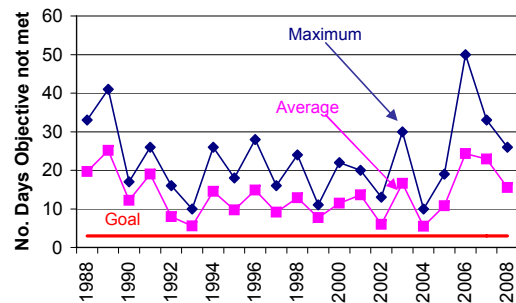


(b) Maximum 24-hour PM<sub>10</sub>

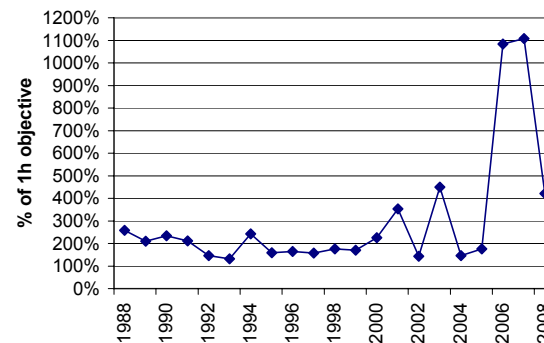


(c) Annual average PM<sub>10</sub>

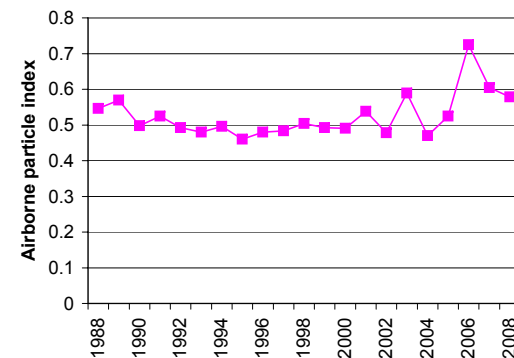
#### 2. Visibility measured as API



(a) Days not meeting the visibility objective



(b) Maximum 1-hour API



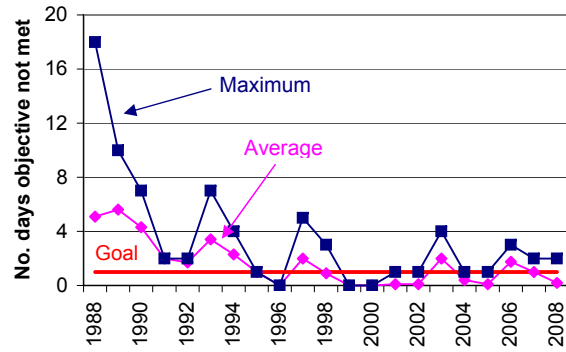
(c) Annual average API

A range of trend parameters for Melbourne are presented:

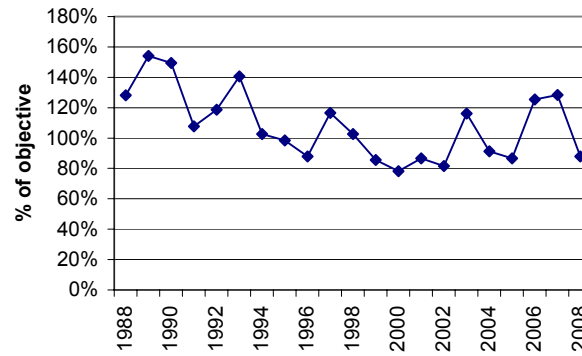
- Days not meeting the objective – Two values for this parameter are presented. The maximum number gives the value for the station recording the highest number of days not meeting the air quality objective each year (that is, the worst performing station that year). The average number (calculated by averaging the number of days at each station in Melbourne) is a better indicator for how Melbourne is performing overall rather than simply looking at an individual station.
- Maximum pollutant levels – This looks at the highest pollutant levels recorded over the year. The value is calculated by averaging the maximum pollutant levels recorded at each monitoring station in Melbourne over any one year.
- Average pollutant levels – In addition to the peak levels, we are also interested in the average pollutant level across Melbourne for the year. This is calculated by averaging levels from each station.

## Trends of air quality in Melbourne (continued)

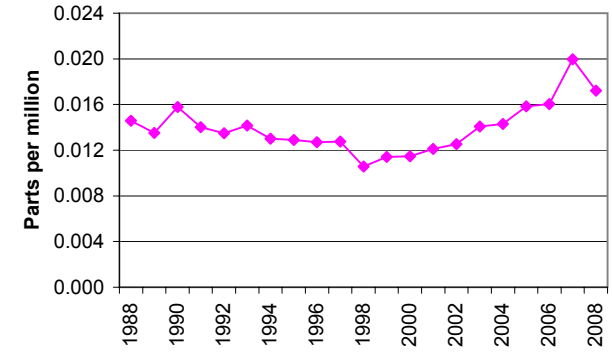
### 3. Ozone



(a) Days not meeting the four-hour ozone objective

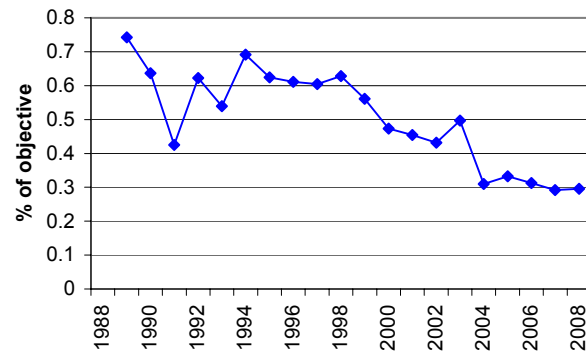


(b) Maximum four-hour ozone

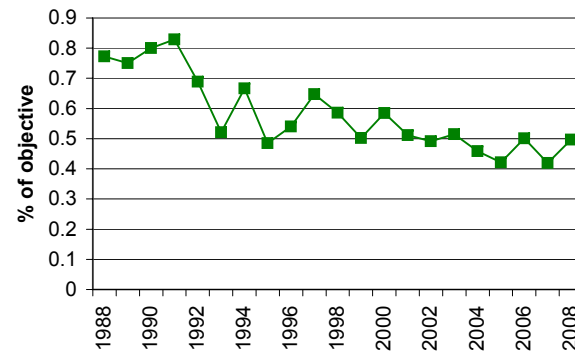


(c) Annual average ozone

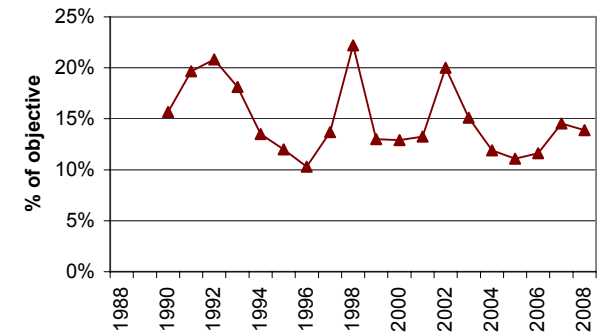
### 4. Other gases



(a) Maximum eight-hour CO



(b) Maximum one-hour NO<sub>2</sub>



(c) Maximum one-hour SO<sub>2</sub>

### Section 3- Monthly Data Tables

1-Hour Visibility (as API)			Policy Objective = 2.35													
Region	Station	1 Hour Average	Jan	Feb	Mar	Apr	May	Jun	Jul	Aug	Sep	Oct	Nov	Dec	Annual	
CITY	Richmond	Average	0.59	0.51	0.54	1.09	0.74	0.73	0.52	0.46	0.50	0.50	0.48	0.44	0.59	
		Data Recovery %	95	96	95	94	95	96	96	94	96	95	95	95	94	95
		No. of Exceedences	0	0	0	6	2	4	0	0	0	1	0	0	0	13
		Maximum	1.99	1.79	1.94	7.60	2.64	3.93	1.85	1.45	1.54	2.65	1.37	0.96	7.60	
Region Summary	Average	0.59	0.51	0.54	1.09	0.74	0.73	0.52	0.46	0.50	0.50	0.48	0.44	0.59		
	Data Recovery %	95	96	95	94	95	96	96	94	96	95	95	95	94	95	
	No. of Exceedences	0	0	0	6	2	4	0	0	0	1	0	0	0	13	
	Maximum	1.99	1.79	1.94	7.60	2.64	3.93	1.85	1.45	1.54	2.65	1.37	0.96	7.60		
EAST	Alphington	Average	0.58	0.52	0.55	1.06	0.81	0.76	0.56	0.52	0.50	0.52	0.46	0.42	0.60	
		Data Recovery %	94	95	95	93	95	95	95	95	95	94	95	95	95	
		No. of Exceedences	0	0	0	7	3	4	1	0	0	0	0	0	15	
		Maximum	2.02	1.79	2.14	8.04	3.43	3.61	2.94	2.27	1.57	1.20	1.43	0.99	8.04	
	Box.Hill	Average	0.58	0.52	0.53	1.15	0.74	0.71	0.52	0.48	0.42	0.41	0.40	0.37	0.57	
		Data Recovery %	94	95	95	96	95	95	95	95	99	94	95	95	95	
		No. of Exceedences	0	1	0	10	5	3	1	0	0	0	0	0	20	
		Maximum	1.69	5.75	1.94	9.38	3.44	3.40	2.38	1.71	1.08	0.86	1.25	0.96	9.38	
	Brighton	Average	0.62	0.54	0.56	1.13	0.74	0.78	0.55	0.48	0.46	0.48	0.48	0.43	0.60	
		Data Recovery %	95	95	95	95	96	95	96	95	95	95	95	96	95	
		No. of Exceedences	0	0	0	7	4	4	0	1	0	0	0	0	16	
		Maximum	1.81	1.77	1.96	7.81	3.67	4.12	1.87	2.46	1.24	1.86	1.75	1.08	7.81	
	Dandenong	Average	0.64	0.57	0.56	1.18	0.73	0.70	0.55	0.48	0.48	0.51	0.48	0.46	0.61	
		Data Recovery %	95	95	94	95	95	95	92	95	95	95	96	95	95	
		No. of Exceedences	0	1	1	8	4	3	0	0	0	1	0	0	18	
		Maximum	1.74	5.07	2.51	11.18	2.78	3.15	2.19	1.73	1.48	2.48	1.36	1.02	11.18	
	Mooroolbark	Average	0.60	0.51	0.58	1.48	0.93	0.77	0.60	0.65	0.50	0.52	0.44	0.39	0.66	
		Data Recovery %	90	95	94	95	95	95	95	95	95	95	95	95	95	
No. of Exceedences		0	0	1	9	8	4	2	2	0	0	0	0	26		
Maximum		2.20	1.65	3.73	12.31	3.47	3.81	3.24	2.79	2.01	1.69	1.64	1.33	12.31		
Region Summary	Average	0.60	0.53	0.56	1.20	0.79	0.75	0.56	0.52	0.47	0.49	0.45	0.41	0.61		
	Data Recovery %	94	95	95	95	95	95	95	95	96	95	95	95	95		
	No. of Exceedences	0	0	1	9	8	4	2	2	0	0	0	0	26		
	Maximum	2.20	1.65	3.73	12.31	3.47	3.81	3.24	2.79	2.01	1.69	1.64	1.33	12.31		
WEST	Deer Park	Average	0.56	0.51	0.52	0.97	0.57	0.57	0.34	0.39	0.41	0.45	0.40	0.52		
		Data Recovery %	94	95	95	94	94	29	44	95	95	95	95	95	85	
		No. of Exceedences	0	0	0	6	2	2	0	0	0	0	2	0	12	
		Maximum	2.17	2.03	1.62	13.53	3.15	3.21	1.10	1.39	1.18	1.57	1.04	0.95	15.70	
	Footscray	Average	0.57	0.53	0.57	1.00	0.67	0.66	0.46	0.39	0.42	0.44	0.40	0.31	0.53	
		Data Recovery %	95	95	95	95	95	94	95	95	95	95	95	95	95	
		No. of Exceedences	0	0	0	6	1	3	0	0	0	1	0	0	11	
		Maximum	2.17	2.28	1.95	8.14	3.41	4.11	1.78	1.90	1.13	4.84	1.21	1.04	8.14	
	Pt.Cook	Average	0.57	0.47	0.52	0.96	0.58	0.57	0.45	0.37	0.41	0.44	0.42	0.36	0.51	
		Data Recovery %	95	95	94	95	93	94	95	95	94	94	94	95	95	
		No. of Exceedences	0	0	0	7	0	1	1	0	0	0	0	0	9	
		Maximum	2.12	1.74	2.14	9.08	2.24	2.75	2.45	2.07	1.35	1.17	1.72	0.87	9.08	
Region Summary	Average	0.57	0.51	0.53	0.98	0.61	0.66	0.45	0.37	0.40	0.43	0.43	0.35	0.52		
	Data Recovery %	95	95	95	95	94	72	78	95	95	95	95	95	92		
	No. of Exceedences	0	0	0	6	2	2	0	0	0	0	0	0	12		
	Maximum	2.17	2.28	2.14	13.53	3.41	4.11	2.45	2.07	1.39	4.84	1.57	1.04	15.70		
GEELONG	GeelongSouth	Average	0.59	0.49	0.54	0.76	0.63	0.60	0.54	0.39	0.44	0.48	0.49	0.41	0.53	
		Data Recovery %	95	95	95	95	95	95	95	95	95	95	93	95	95	
		No. of Exceedences	0	0	1	6	2	2	0	0	0	0	0	0	11	
		Maximum	1.87	1.84	4.09	5.53	6.45	4.17	1.93	1.61	1.26	1.75	1.65	1.04	6.45	
Region Summary	Average	0.59	0.49	0.54	0.76	0.63	0.60	0.54	0.39	0.44	0.48	0.49	0.41	0.53		
	Data Recovery %	95	95	95	95	95	95	95	95	95	95	93	95	95		
	No. of Exceedences	0	0	1	6	2	2	0	0	0	0	0	0	11		
	Maximum	1.87	1.84	4.09	5.53	6.45	4.17	1.93	1.61	1.26	1.75	1.65	1.04	6.45		
LATROBE VALLEY	Moe	Average	0.55	0.46	0.54	1.06	0.69	0.63	0.58	0.48	0.46	0.45	0.43	0.39	0.56	
		Data Recovery %	96	96	96	96	96	96	96	95	96	96	96	95	96	
		No. of Exceedences	0	0	2	6	0	1	0	0	0	0	0	0	9	
		Maximum	1.57	1.37	3.98	22.40	1.96	2.45	2.08	1.81	1.38	0.96	1.58	0.80	22.40	
	Traralgon	Average	0.54	0.44	0.58	0.98	0.86	0.70	0.70	0.54	0.47	0.46	0.45	0.41	0.59	
		Data Recovery %	96	96	96	96	96	96	96	96	96	96	96	94	96	
		No. of Exceedences	0	0	3	8	6	2	5	1	0	0	0	0	25	
		Maximum	1.37	1.90	5.09	13.46	6.78	3.58	2.86	3.98	1.91	1.15	2.28	0.91	13.46	
	Region Summary	Average	0.54	0.45	0.56	1.02	0.78	0.66	0.64	0.51	0.47	0.45	0.44	0.40	0.58	
		Data Recovery %	96	96	96	96	96	96	96	95	96	96	96	95	96	
		No. of Exceedences	0	0	3	8	6	2	5	1	0	0	0	0	25	
		Maximum	1.57	1.90	5.09	22.40	6.78	3.58	2.86	3.98	1.91	1.15	2.28	0.91	22.40	

Note: Monthly maxima and averages for individual stations are not reported if data recovery is <75% (a maximum is recorded, however, if there has been an exceedence of a policy objective)

24-Hour PM <sub>10</sub> by TEOM			Policy Objective = 50 mg/m <sup>3</sup>													
Region	Station	24 Hour Average (mg/m <sup>3</sup> )	Jan	Feb	Mar	Apr	May	Jun	Jul	Aug	Sep	Oct	Nov	Dec	Annual	
CITY	Richmond	Average	20.3	19.1	23.2	27.3	18.9	17.8	16.1	14.8	18.6	20.5	17.6	15.6	19.1	
		Data Recovery %	100	100	100	90	100	90	100	100	100	100	100	100	90	98
		No. of Exceedences	0	0	1	4	0	0	0	0	0	0	0	0	0	5
Maximum		34.0	28.6	53.6	73.5	39.3	35.9	25.5	24.1	26.4	32.4	36.4	34.1	73.5		
	<b>Region Summary</b>	<b>Average</b>	<b>20.3</b>	<b>19.1</b>	<b>23.2</b>	<b>27.3</b>	<b>18.9</b>	<b>17.8</b>	<b>16.1</b>	<b>14.8</b>	<b>18.6</b>	<b>20.5</b>	<b>17.6</b>	<b>15.6</b>	<b>19.1</b>	
		<b>Data Recovery %</b>	<b>100</b>	<b>100</b>	<b>100</b>	<b>90</b>	<b>100</b>	<b>90</b>	<b>100</b>	<b>100</b>	<b>100</b>	<b>100</b>	<b>100</b>	<b>90</b>	<b>98</b>	
		<b>Maximum</b>	<b>34.0</b>	<b>28.6</b>	<b>53.6</b>	<b>73.5</b>	<b>39.3</b>	<b>35.9</b>	<b>25.5</b>	<b>24.1</b>	<b>26.4</b>	<b>32.4</b>	<b>36.4</b>	<b>34.1</b>	<b>73.5</b>	
EAST	Alphington	Average	22.3	18.4	22.1	24.5	20.1	17.5	15.8	14.2	20.3	23.6	18.7	15.2	19.4	
		Data Recovery %	100	100	100	97	100	100	100	100	100	97	100	100	99	
		No. of Exceedences	0	0	1	2	0	0	0	0	0	0	0	0	3	
		Maximum	39.1	28.5	54.3	71.1	42.8	36.3	30.1	23.5	31.0	36.0	40.3	29.5	71.1	
	Box.Hill	Average	19.7	17.9	23.4	24.6	17.8	16.3	14.5	12.8	16.2	19.0	15.8	14.1	17.7	
		Data Recovery %	100	100	100	100	100	100	100	100	84	100	100	100	99	
		No. of Exceedences	0	0	1	3	0	0	0	0	0	0	0	0	4	
		Maximum	32.9	28.5	51.8	72.6	35.0	33.2	25.8	22.9	22.7	30.2	29.0	28.5	72.6	
	Brighton	Average	20.9	15.1	19.1	21.7	17.7	16.5	16.3	13.0	18.1	23.4	17.5	15.6	17.9	
		Data Recovery %	100	100	100	100	100	100	100	100	100	100	100	100	100	
		No. of Exceedences	0	0	1	3	0	0	0	0	0	0	0	0	5	
		Maximum	34.1	24.5	50.8	65.3	38.7	40.7	33.5	22.8	24.5	58.8	35.5	30.3	65.3	
	Dandenong	Average	27.9	22.0	26.9	29.1	20.8	19.6	17.9	13.9	20.2	22.2	17.9	17.5	21.3	
		Data Recovery %	100	100	90	100	100	100	100	100	100	100	100	100	99	
		No. of Exceedences	0	0	2	5	0	0	0	0	0	1	0	0	8	
Maximum		48.9	44.7	61.8	88.6	42.2	45.3	47.1	27.9	37.8	59.2	27.7	34.5	88.6		
Macleod	Average	20.5				16.4	15.0	14.8	11.3					16.3		
	Data Recovery %	94	17	0	27	100	87	100	77					42		
	No. of Exceedences	0	0	0	2	0	0	0	0					2		
	Maximum	39.4			62.7	32.3	40.7	25.7	19.1					62.7		
Mooroolbark	Average	24.7	20.6	30.6	34.1	24.8	21.8	19.9	21.5	22.9	24.7	18.1	15.8	23.2		
	Data Recovery %	87	100	87	100	100	100	100	87	100	100	100	100	98		
	No. of Exceedences	0	0	3	5	0	1	0	1	0	0	0	0	10		
	Maximum	42.1	43.0	58.3	99.9	44.3	52.8	32.0	54.8	43.5	49.7	37.5	32.3	99.9		
	<b>Region Summary</b>	<b>Average</b>	<b>22.6</b>	<b>18.8</b>	<b>24.2</b>	<b>26.7</b>	<b>19.6</b>	<b>17.9</b>	<b>16.5</b>	<b>14.6</b>	<b>19.5</b>	<b>22.6</b>	<b>17.6</b>	<b>15.6</b>	<b>19.6</b>	
		<b>Data Recovery %</b>	<b>97</b>	<b>86</b>	<b>80</b>	<b>87</b>	<b>100</b>	<b>98</b>	<b>100</b>	<b>94</b>	<b>99</b>	<b>100</b>	<b>100</b>	<b>100</b>	<b>95</b>	
		<b>Maximum</b>	<b>48.9</b>	<b>44.7</b>	<b>61.8</b>	<b>99.9</b>	<b>44.3</b>	<b>52.8</b>	<b>47.1</b>	<b>54.8</b>	<b>43.5</b>	<b>59.2</b>	<b>40.3</b>	<b>34.5</b>	<b>99.9</b>	
WEST	Deer Park	Average	24.5	16.9	27.0	27.4	16.3	14.3	12.7	11.5	16.6	22.2	19.4	15.0	18.6	
		Data Recovery %	100	100	100	100	100	100	100	100	100	100	100	100	100	
		No. of Exceedences	1	2	0	4	0	0	0	0	0	0	0	0	7	
		Maximum	62.7	32.0	62.1	81.8	44.3	30.4	23.4	23.0	28.6	39.4	41.8	31.4	81.8	
	Footscray	Average	24.3	22.0	24.8	27.6	20.0	20.7	17.1	16.3	20.7	24.0	19.3	17.7	21.2	
		Data Recovery %	100	100	100	100	100	100	100	100	100	100	100	100	100	
No. of Exceedences		1	0	1	2	0	0	0	0	0	0	0	0	4		
Maximum		50.2	45.7	70.2	89.3	42.2	46.9	28.1	31.4	32.0	43.2	40.8	35.1	89.3		
	<b>Region Summary</b>	<b>Average</b>	<b>24.4</b>	<b>19.4</b>	<b>25.9</b>	<b>27.5</b>	<b>18.2</b>	<b>17.5</b>	<b>14.9</b>	<b>13.9</b>	<b>18.7</b>	<b>23.1</b>	<b>19.3</b>	<b>16.3</b>	<b>19.9</b>	
		<b>Data Recovery %</b>	<b>100</b>	<b>100</b>	<b>100</b>	<b>100</b>	<b>100</b>	<b>100</b>	<b>100</b>	<b>100</b>	<b>100</b>	<b>100</b>	<b>100</b>	<b>100</b>	<b>100</b>	
		<b>Maximum</b>	<b>62.7</b>	<b>45.7</b>	<b>70.2</b>	<b>89.3</b>	<b>44.3</b>	<b>46.9</b>	<b>28.1</b>	<b>31.4</b>	<b>32.0</b>	<b>43.2</b>	<b>41.8</b>	<b>35.1</b>	<b>89.3</b>	
GEELONG	GeelongSouth	Average	26.8	20.4	26.3	28.4	18.8	16.8	19.5	15.1	22.4	28.2	20.3	17.4	21.7	
		Data Recovery %	100	100	100	100	100	100	100	100	100	100	97	100	100	
		No. of Exceedences	1	0	1	2	0	0	0	0	0	1	1	0	6	
Maximum		70.7	49.3	116.9	168.7	44.0	36.3	40.3	29.2	37.1	65.1	62.2	38.2	168.7		
	<b>Region Summary</b>	<b>Average</b>	<b>26.8</b>	<b>20.4</b>	<b>26.3</b>	<b>28.4</b>	<b>18.8</b>	<b>16.8</b>	<b>19.5</b>	<b>15.1</b>	<b>22.4</b>	<b>28.2</b>	<b>20.3</b>	<b>17.4</b>	<b>21.7</b>	
		<b>Data Recovery %</b>	<b>100</b>	<b>100</b>	<b>100</b>	<b>100</b>	<b>100</b>	<b>100</b>	<b>100</b>	<b>100</b>	<b>100</b>	<b>97</b>	<b>100</b>	<b>100</b>		
		<b>Maximum</b>	<b>70.7</b>	<b>49.3</b>	<b>116.9</b>	<b>168.7</b>	<b>44.0</b>	<b>36.3</b>	<b>40.3</b>	<b>29.2</b>	<b>37.1</b>	<b>65.1</b>	<b>62.2</b>	<b>38.2</b>	<b>168.7</b>	
LATROBE VALLEY	Moe	Average	21.8	16.9	25.1	26.9	14.9	13.7	11.9	17.2	19.9	16.0	14.9	17.9		
		Data Recovery %	100	100	100	100	100	87	100	100	100	100	100	99		
		No. of Exceedences	0	0	1	5	0	0	0	0	0	0	0	6		
		Maximum	42.7	30.9	67.2	90.9	27.1	30.8	19.3	17.7	30.6	38.8	29.1	23.8	90.9	
	Traralgon	Average	22.5	14.8	23.0	24.1	20.7	17.5	19.9	14.5	18.9	19.9	15.6	16.0	19.0	
		Data Recovery %	100	100	100	100	100	100	100	100	100	100	100	100	100	
No. of Exceedences		0	0	1	1	0	0	0	0	0	0	0	0	2		
Maximum		39.6	22.4	54.7	64.9	38.1	35.3	31.4	24.0	39.1	34.1	24.8	29.6	64.9		
	<b>Region Summary</b>	<b>Average</b>	<b>22.2</b>	<b>15.8</b>	<b>24.1</b>	<b>25.5</b>	<b>17.8</b>	<b>16.4</b>	<b>16.8</b>	<b>13.2</b>	<b>18.0</b>	<b>19.9</b>	<b>15.8</b>	<b>18.4</b>		
		<b>Data Recovery %</b>	<b>100</b>	<b>100</b>	<b>100</b>	<b>100</b>	<b>100</b>	<b>93</b>	<b>100</b>	<b>100</b>	<b>100</b>	<b>100</b>	<b>100</b>	<b>99</b>		
		<b>Maximum</b>	<b>42.7</b>	<b>30.9</b>	<b>67.2</b>	<b>90.9</b>	<b>38.1</b>	<b>35.3</b>	<b>31.4</b>	<b>24.0</b>	<b>39.1</b>	<b>38.8</b>	<b>29.1</b>	<b>29.6</b>	<b>90.9</b>	

Note: (1) Monthly maxima and averages for individual stations are not reported if data recovery is <75%  
(2) Data recovery is based on the number of valid days (where hourly data capture is >75% on an individual day)

24-Hour PM <sub>10</sub> by HIVoL			Policy Objective = 50 mg/m <sup>3</sup>												
Region	Station	24 Hour Average (mg/m <sup>3</sup> )	Jan	Feb	Mar	Apr	May	Jun	Jul	Aug	Sep	Oct	Nov	Dec	Annual
WEST	Footscray	Average	29.1	24.3	26.2	21.6	17.0	24.6	14.3	13.4	21.1	19.5	15.2	19.9	
		Data Recovery %	100	100	100	100	100	80	100	100	100	100	100	100	98
		Maximum	42.6	36.4	44.7	41.4	32.8	41.0	17.8	21.7	19.7	25.9	32.6	22.4	44.7

Note: (1) HIVoLs are operated on a one day in six basis.  
(2) Data recovery is based on the number of valid days

24-Hour PM <sub>2.5</sub> by Partisol			Advisory Reporting Standard = 25 µg / m <sup>3</sup>													
Region	Station	24 Hour Average (mg/m3)	Jan	Feb	Mar	Apr	May	Jun	Jul	Aug	Sep	Oct	Nov	Dec	Annual	
EAST	Alphington	Average	7.2	6.5	7.1	14.3	11.6	9.6	7.3	7.0	5.8	5.6	5.7	5.3	7.8	
		Data Recovery %	100	100	100	100	100	100	100	100	100	100	100	100	100	100
		No. of Exceedences	0	0	0	2	1	1	0	0	0	0	0	0	0	4
		Maximum	9.2	10.4	10.7	46.7	32.2	32.1	12.9	15.8	10.2	7.3	8.8	7.5	46.7	
WEST	Footscray	Average	7.6	6.9	7.2	10.7	9.0	8.1	6.0	4.6	6.1	5.6		6.0	7.0	
		Data Recovery %	100	100	100	100	100	80	100	100	90	91	70	80	93	
		No. of Exceedences	0	0	0	1	1	1	0	0	0	0	0	0	3	
		Maximum	10.7	11.8	11.9	30.5	25.5	29.7	13.0	9.4	11.9	10.5	7.9	30.5		

Note: (1) Partisols are operated on a one day in three basis  
(2) Data recovery is based on the number of valid days

24-Hour PM <sub>2.5</sub> by TEOM																
Region	Station	24 Hour Average (mg/m3)	Jan	Feb	Mar	Apr	May	Jun	Jul	Aug	Sep	Oct	Nov	Dec	Annual	
EAST	Alphington	Average	6.2	5.1	5.7	11.6	7.3	5.9	4.6	3.7	4.3	7.1	4.5	3.8	5.8	
		Data Recovery %	100	100	100	97	100	100	100	100	97	100	100	100	100	99
		Maximum	9.9	10.2	13.4	44.2	19.4	18.0	12.8	10.1	8.1	24.9	7.7	6.7	44.2	
WEST	Footscray	Average	6.2	5.0	6.2	9.0	6.3	5.9	4.0	3.0	4.6	4.9	4.6	4.3	5.3	
		Data Recovery %	100	100	100	100	97	100	100	100	100	100	100	97	99	
		Maximum	9.3	9.8	13.1	34.5	17.0	18.8	9.5	7.1	9.3	9.1	10.3	7.2	34.5	

Note: (1) Monthly maxima and averages for individual stations are not reported if data recovery is <75%  
(2) Data recovery is based on the number of valid days (where hourly data capture is >75% on an individual day)

1-Hour Ozone		Policy Objective = 0.10 ppm													
Region	Station	1 Hour Average (ppm)	Jan	Feb	Mar	Apr	May	Jun	Jul	Aug	Sep	Oct	Nov	Dec	Annual
EAST	Alphington	Average	0.018	0.013	0.015	0.012	0.005		0.011	0.012	0.015	0.016	0.015	0.010	0.013
		Data Recovery %	94	95	95	93	95	74	94	95	95	94	95	95	93
		Maximum	0.061	0.060	0.075	0.049	0.024		0.032	0.030	0.032	0.038	0.040	0.036	0.075
	Box.Hill	Average	0.018	0.014	0.016	0.012	0.011	0.013	0.014	0.016	0.025	0.020	0.023	0.017	0.017
		Data Recovery %	90	95	95	95	95	95	95	94	95	93	95	95	94
		Maximum	0.062	0.067	0.086	0.057	0.032	0.029	0.031	0.033	0.050	0.043	0.062	0.050	0.086
	Brighton	Average	0.023	0.020	0.020	0.016	0.012	0.015	0.015	0.019	0.021	0.023	0.023	0.018	0.019
		Data Recovery %	95	95	95	95	95	95	96	94	95	94	96	86	94
		Maximum	0.075	0.090	0.073	0.050	0.033	0.033	0.034	0.036	0.043	0.048	0.071	0.044	0.090
	Dandenong	Average	0.020	0.015	0.018	0.013	0.011	0.013	0.012	0.015	0.018	0.019	0.019	0.014	0.016
Data Recovery %		95	95	94	95	95	95	95	95	95	95	96	95	95	
Maximum		0.074	0.069	0.057	0.045	0.033	0.031	0.033	0.034	0.038	0.045	0.056	0.040	0.074	
Macleod	Average	0.021	0.015	0.016	0.013	0.009	0.013	0.014	0.016					0.015	
	Data Recovery %	94	94	95	93	95	85	94	76					60	
	Maximum	0.066	0.074	0.078	0.056	0.031	0.030	0.031	0.032					0.078	
Mooroolbark	Average	0.023	0.017	0.018	0.014	0.010	0.014	0.015	0.015	0.020	0.020	0.021	0.016	0.017	
	Data Recovery %	89	95	94	95	95	95	94	95	95	95	91	95	94	
	Maximum	0.072	0.066	0.081	0.056	0.032	0.030	0.031	0.032	0.039	0.047	0.051	0.045	0.081	
Region Summary	Average	0.021	0.016	0.017	0.014	0.010	0.013	0.013	0.015	0.020	0.020	0.020	0.015	0.016	
	Data Recovery %	93	95	95	94	95	90	95	91	95	94	94	93	94	
	Maximum	0.075	0.090	0.086	0.057	0.033	0.033	0.034	0.036	0.050	0.048	0.071	0.050	0.090	
WEST	AltonaNorth	Average	0.022	0.019	0.019	0.016	0.013	0.013	0.013	0.017	0.020	0.023	0.023	0.017	0.018
		Data Recovery %	95	95	95	95	94	94	94	95	94	94	94	94	95
		Maximum	0.073	0.085	0.086	0.057	0.034	0.031	0.033	0.034	0.044	0.045	0.077	0.042	0.086
	Deer Park	Average	0.021	0.018	0.019	0.015	0.012	0.015	0.016	0.018	0.020	0.021	0.020	0.015	0.017
		Data Recovery %	94	95	95	94	94	95	95	95	95	94	95	95	95
		Maximum	0.074	0.074	0.071	0.051	0.035	0.033	0.032	0.049	0.041	0.057	0.048	0.074	
	Footscray	Average	0.021	0.016	0.016	0.014	0.010	0.012	0.013	0.015	0.020	0.021	0.019	0.015	0.016
		Data Recovery %	94	95	95	95	95	94	95	94	83	92	94	95	94
		Maximum	0.073	0.068	0.068	0.055	0.030	0.029	0.032	0.050	0.042	0.055	0.046	0.073	
	Melton	Average		0.020	0.022	0.018	0.015	0.018	0.017	0.021	0.022	0.024	0.023	0.019	0.020
Data Recovery %		14	90	94	91	92	96	95	95	95	94	95	95	87	
Maximum			0.071	0.062	0.058	0.039	0.034	0.033	0.034	0.049	0.043	0.067	0.045	0.071	
Pt.Cook	Average	0.024	0.020	0.020	0.020	0.015	0.018	0.018	0.022	0.024	0.024	0.024	0.020	0.021	
	Data Recovery %	95	95	94	95	93	94	95	95	96	94	93	95	94	
	Maximum	0.087	0.088	0.082	0.057	0.032	0.034	0.036	0.036	0.042	0.049	0.084	0.043	0.088	
Region Summary	Average	0.022	0.018	0.019	0.016	0.013	0.015	0.015	0.019	0.021	0.022	0.022	0.017	0.018	
	Data Recovery %	78	94	95	94	94	95	95	95	93	94	94	95	93	
	Maximum	0.087	0.088	0.086	0.058	0.039	0.035	0.036	0.036	0.050	0.049	0.084	0.048	0.088	
GEELONG	GeelongSouth	Average	0.024	0.018	0.021	0.018	0.016	0.019	0.017	0.021	0.021	0.022	0.023	0.018	0.020
		Data Recovery %	95	95	95	95	94	95	90	94	95	94	93	95	94
		Maximum	0.084	0.075	0.079	0.054	0.032	0.033	0.035	0.034	0.037	0.056	0.074	0.046	0.084
	Point.Henry	Average	0.019	0.013	0.017	0.015	0.014	0.017	0.016	0.020	0.022	0.023	0.022	0.016	0.018
		Data Recovery %	88	91	95	96	96	96	96	95	95	96	96	96	95
		Maximum	0.079	0.065	0.068	0.047	0.030	0.032	0.033	0.033	0.040	0.046	0.080	0.040	0.080
Region Summary	Average	0.022	0.016	0.019	0.016	0.015	0.018	0.016	0.021	0.021	0.022	0.022	0.017	0.019	
	Data Recovery %	91	93	95	95	95	95	93	95	95	95	94	95	94	
	Maximum	0.084	0.075	0.079	0.054	0.032	0.033	0.035	0.034	0.040	0.056	0.080	0.046	0.084	
LATROBE VALLEY	Moe	Average	0.019	0.015	0.015	0.011	0.010	0.012	0.011	0.013	0.014	0.013	0.013	0.010	0.013
		Data Recovery %	96	96	96	96	96	96	95	95	95	95	95	95	95
		Maximum	0.057	0.052	0.047	0.038	0.027	0.024	0.025	0.025	0.028	0.029	0.035	0.025	0.057
	Traralgon	Average	0.018	0.016	0.017	0.014	0.010	0.012	0.011	0.015	0.016	0.015	0.016	0.013	0.014
		Data Recovery %	95	96	96	96	96	96	96	95	95	95	95	94	95
Maximum		0.061	0.058	0.060	0.038	0.025	0.027	0.029	0.027	0.031	0.031	0.042	0.031	0.061	
Region Summary	Average	0.019	0.016	0.016	0.012	0.010	0.012	0.011	0.014	0.015	0.014	0.014	0.011	0.014	
	Data Recovery %	95	96	96	96	96	96	95	95	95	95	95	95	95	
	Maximum	0.061	0.058	0.060	0.038	0.027	0.027	0.029	0.027	0.031	0.031	0.042	0.031	0.061	

Note: Monthly maxima and averages for individual stations are not reported if data recovery is <75% (a maximum is recorded, however, if there has been an exceedance of a policy objective)

4-Hour Ozone			Policy Objective = 0.08 ppm												
Region	Station	4 Hour Average (ppm)	Jan	Feb	Mar	Apr	May	Jun	Jul	Aug	Sep	Oct	Nov	Dec	Annual
EAST	Alphington	Maximum	0.061	0.057	0.063	0.046	0.023	0.020	0.031	0.029	0.031	0.037	0.037	0.033	0.063
		No. of Exceedences	0	0	0	0	0	0	0	0	0	0	0	0	0
	Box.Hill	Maximum	0.061	0.061	0.064	0.054	0.031	0.027	0.031	0.033	0.047	0.042	0.059	0.047	0.064
		No. of Exceedences	0	0	0	0	0	0	0	0	0	0	0	0	0
	Brighton	Maximum	0.070	0.079	0.070	0.048	0.033	0.032	0.034	0.035	0.040	0.046	0.066	0.041	0.079
		No. of Exceedences	0	0	0	0	0	0	0	0	0	0	0	0	0
	Dandenong	Maximum	0.073	0.063	0.055	0.043	0.032	0.030	0.033	0.034	0.036	0.042	0.054	0.039	0.073
No. of Exceedences		0	0	0	0	0	0	0	0	0	0	0	0	0	
Macleod	Maximum	0.065	0.064	0.059	0.054	0.031	0.028	0.031	0.031					0.065	
	No. of Exceedences	0	0	0	0	0	0	0	0					0	
Mooroolbark	Maximum	0.069	0.058	0.073	0.052	0.031	0.030	0.030	0.031	0.038	0.043	0.047	0.043	0.073	
	No. of Exceedences	0	0	0	0	0	0	0	0	0	0	0	0	0	
	<b>Region Summary</b>	<b>Maximum</b>	<b>0.073</b>	<b>0.079</b>	<b>0.073</b>	<b>0.054</b>	<b>0.033</b>	<b>0.032</b>	<b>0.034</b>	<b>0.035</b>	<b>0.047</b>	<b>0.046</b>	<b>0.066</b>	<b>0.047</b>	<b>0.079</b>
WEST	AltonaNorth	Maximum	0.066	0.078	0.076	0.051	0.033	0.030	0.033	0.034	0.039	0.043	0.074	0.041	0.078
		No. of Exceedences	0	0	0	0	0	0	0	0	0	0	0	0	0
	Deer Park	Maximum	0.065	0.067	0.060	0.051	0.034	0.032	0.033	0.031	0.046	0.040	0.049	0.041	0.067
		No. of Exceedences	0	0	0	0	0	0	0	0	0	0	0	0	0
	Footscray	Maximum	0.064	0.061	0.059	0.044	0.029	0.029	0.029	0.031	0.044	0.041	0.049	0.040	0.064
		No. of Exceedences	0	0	0	0	0	0	0	0	0	0	0	0	0
	Melton	Maximum		0.062	0.055	0.052	0.038	0.031	0.033	0.033	0.048	0.042	0.057	0.042	0.062
No. of Exceedences		0	0	0	0	0	0	0	0	0	0	0	0	0	
Pt.Cook	Maximum	0.081	0.082	0.074	0.050	0.031	0.033	0.036	0.036	0.040	0.046	0.079	0.042	0.082	
	No. of Exceedences	1	1	0	0	0	0	0	0	0	0	0	0	2	
	<b>Region Summary</b>	<b>Maximum</b>	<b>0.081</b>	<b>0.082</b>	<b>0.076</b>	<b>0.052</b>	<b>0.038</b>	<b>0.033</b>	<b>0.036</b>	<b>0.036</b>	<b>0.048</b>	<b>0.046</b>	<b>0.079</b>	<b>0.042</b>	<b>0.082</b>
GEELONG	GeelongSouth	Maximum	0.076	0.070	0.072	0.049	0.031	0.032	0.035	0.033	0.035	0.049	0.067	0.045	0.076
		No. of Exceedences	0	0	0	0	0	0	0	0	0	0	0	0	0
	Point.Henry	Maximum	0.073	0.061	0.060	0.041	0.030	0.030	0.033	0.033	0.035	0.043	0.072	0.039	0.073
No. of Exceedences		0	0	0	0	0	0	0	0	0	0	0	0	0	
	<b>Region Summary</b>	<b>Maximum</b>	<b>0.076</b>	<b>0.070</b>	<b>0.072</b>	<b>0.049</b>	<b>0.031</b>	<b>0.032</b>	<b>0.035</b>	<b>0.033</b>	<b>0.035</b>	<b>0.049</b>	<b>0.072</b>	<b>0.045</b>	<b>0.076</b>
LATROBE VALLEY	Moe	Maximum	0.057	0.048	0.042	0.037	0.025	0.023	0.025	0.024	0.027	0.028	0.034	0.023	0.057
		No. of Exceedences	0	0	0	0	0	0	0	0	0	0	0	0	0
	Traralgon	Maximum	0.053	0.053	0.050	0.037	0.025	0.027	0.028	0.026	0.030	0.030	0.039	0.029	0.053
No. of Exceedences		0	0	0	0	0	0	0	0	0	0	0	0	0	
	<b>Region Summary</b>	<b>Maximum</b>	<b>0.057</b>	<b>0.053</b>	<b>0.050</b>	<b>0.037</b>	<b>0.025</b>	<b>0.027</b>	<b>0.028</b>	<b>0.026</b>	<b>0.030</b>	<b>0.030</b>	<b>0.039</b>	<b>0.029</b>	<b>0.057</b>

8-Hour Carbon Monoxide			Policy Objective = 9.0 ppm												
Region	Station	8 Hour Average (ppm)	Jan	Feb	Mar	Apr	May	Jun	Jul	Aug	Sep	Oct	Nov	Dec	Annual
CITY	Richmond	Average	0.3	0.2	0.3	0.5	0.5	0.5	0.5	0.4	0.3	0.3	0.2	0.2	0.3
		Data Recovery %	95	96	95	86	95	86	94	94	95	94	95	87	93
		Maximum	0.5	0.5	1.0	1.6	2.0	3.7	2.0	1.6	1.3	1.0	0.6	0.6	3.7
	<b>Region Summary</b>	<b>Average</b>	<b>0.3</b>	<b>0.2</b>	<b>0.3</b>	<b>0.5</b>	<b>0.5</b>	<b>0.5</b>	<b>0.5</b>	<b>0.4</b>	<b>0.3</b>	<b>0.3</b>	<b>0.2</b>	<b>0.2</b>	<b>0.3</b>
	<b>Data Recovery %</b>	<b>95</b>	<b>96</b>	<b>95</b>	<b>86</b>	<b>95</b>	<b>86</b>	<b>94</b>	<b>94</b>	<b>95</b>	<b>94</b>	<b>95</b>	<b>87</b>	<b>93</b>	
	<b>Maximum</b>	<b>0.5</b>	<b>0.5</b>	<b>1.0</b>	<b>1.6</b>	<b>2.0</b>	<b>3.7</b>	<b>2.0</b>	<b>1.6</b>	<b>1.3</b>	<b>1.0</b>	<b>0.6</b>	<b>0.6</b>	<b>3.7</b>	
EAST	Alphington	Average	0.3	0.2	0.3	0.5	0.7	0.4	0.5	0.4	0.3	0.3	0.2	0.2	0.4
		Data Recovery %	94	95	95	90	92	94	95	95	95	94	95	95	94
		Maximum	0.6	0.6	0.9	1.6	3.2	3.1	2.6	1.7	1.7	0.9	0.7	0.6	3.2
	Box.Hill	Average	0.1	0.1	0.2	0.4	0.5	0.3	0.3	0.3	0.2	0.2	0.1	0.1	0.2
		Data Recovery %	94	95	95	95	95	95	95	95	95	95	94	92	95
		Maximum	0.3	0.4	0.6	1.5	2.2	2.3	2.0	1.5	0.8	0.8	0.4	0.4	2.3
	Mooroolbark	Average	0.0	0.1	0.1	0.3	0.4	0.3	0.2	0.2	0.1	0.1	0.0	0.0	0.1
		Data Recovery %	88	94	94	90	94	94	94	94	94	89	90	95	93
Maximum		0.3	0.5	0.5	1.4	1.9	2.0	1.8	1.9	1.0	0.4	0.2	0.3	2.0	
<b>Region Summary</b>	<b>Average</b>	<b>0.2</b>	<b>0.2</b>	<b>0.3</b>	<b>0.6</b>	<b>0.8</b>	<b>0.5</b>	<b>0.5</b>	<b>0.5</b>	<b>0.3</b>	<b>0.3</b>	<b>0.2</b>	<b>0.2</b>	<b>0.4</b>	
	<b>Data Recovery %</b>	<b>92</b>	<b>95</b>	<b>95</b>	<b>92</b>	<b>94</b>	<b>94</b>	<b>95</b>	<b>95</b>	<b>94</b>	<b>92</b>	<b>92</b>	<b>95</b>	<b>94</b>	
	<b>Maximum</b>	<b>0.6</b>	<b>0.6</b>	<b>0.9</b>	<b>1.6</b>	<b>3.2</b>	<b>3.1</b>	<b>2.6</b>	<b>1.9</b>	<b>1.7</b>	<b>0.9</b>	<b>0.7</b>	<b>0.6</b>	<b>3.2</b>	
WEST	Footscray	Average	0.2	0.0	0.2	0.3	0.4	0.3	0.3	0.2	0.2	0.1	0.1	0.1	0.2
		Data Recovery %	93	95	95	95	95	94	95	94	95	93	92	94	94
		Maximum	0.7	0.5	0.9	1.6	1.5	2.1	1.4	0.8	0.8	0.8	0.6	0.9	2.1
	<b>Region Summary</b>	<b>Average</b>	<b>0.2</b>	<b>0.0</b>	<b>0.2</b>	<b>0.3</b>	<b>0.4</b>	<b>0.3</b>	<b>0.3</b>	<b>0.2</b>	<b>0.2</b>	<b>0.1</b>	<b>0.1</b>	<b>0.1</b>	<b>0.2</b>
	<b>Data Recovery %</b>	<b>93</b>	<b>95</b>	<b>95</b>	<b>95</b>	<b>95</b>	<b>94</b>	<b>95</b>	<b>94</b>	<b>95</b>	<b>93</b>	<b>92</b>	<b>94</b>	<b>94</b>	
	<b>Maximum</b>	<b>0.7</b>	<b>0.5</b>	<b>0.9</b>	<b>1.6</b>	<b>1.5</b>	<b>2.1</b>	<b>1.4</b>	<b>0.8</b>	<b>0.8</b>	<b>0.8</b>	<b>0.6</b>	<b>0.9</b>	<b>2.1</b>	
GEELONG	GeelongSouth	Average	0.2	0.1	0.0	0.1	0.1	0.1	0.2	0.1		0.2	0.1	0.1	0.1
		Data Recovery %	95	94	92	95	94	95	94	94	56	93	93	95	91
		Maximum	0.5	0.5	0.3	2.2	2.0	1.6	1.8	0.7		0.5	0.4	0.3	2.2
	<b>Region Summary</b>	<b>Average</b>	<b>0.2</b>	<b>0.1</b>	<b>0.0</b>	<b>0.1</b>	<b>0.1</b>	<b>0.1</b>	<b>0.2</b>	<b>0.1</b>		<b>0.2</b>	<b>0.1</b>	<b>0.1</b>	<b>0.1</b>
	<b>Data Recovery %</b>	<b>95</b>	<b>94</b>	<b>92</b>	<b>95</b>	<b>94</b>	<b>95</b>	<b>94</b>	<b>94</b>	<b>56</b>	<b>93</b>	<b>93</b>	<b>95</b>	<b>91</b>	
	<b>Maximum</b>	<b>0.5</b>	<b>0.5</b>	<b>0.3</b>	<b>2.2</b>	<b>2.0</b>	<b>1.6</b>	<b>1.8</b>	<b>0.7</b>		<b>0.5</b>	<b>0.4</b>	<b>0.3</b>	<b>2.2</b>	

**Note:** Monthly maxima and averages for individual stations are not reported if data recovery is <75% (a maximum is recorded, however, if there has been an exceedence of a policy objective)

1-Hour Nitrogen Dioxide			Policy Objective = 0.12 ppm												
Region	Station	1 Hour Average (ppm)	Jan	Feb	Mar	Apr	May	Jun	Jul	Aug	Sep	Oct	Nov	Dec	Annual
CITY	Richmond	Average	0.007	0.009	0.013	0.018	0.018	0.015	0.016	0.016	0.013	0.013	0.009	0.009	0.013
		Data Recovery %	95	96	95	84	95	88	94	94	95	94	95	90	93
		Maximum	0.036	0.030	0.061	0.059	0.047	0.042	0.038	0.040	0.041	0.046	0.057	0.029	0.061
	<b>Region Summary</b>	<b>Average</b>	<b>0.007</b>	<b>0.009</b>	<b>0.013</b>	<b>0.018</b>	<b>0.018</b>	<b>0.015</b>	<b>0.016</b>	<b>0.016</b>	<b>0.013</b>	<b>0.013</b>	<b>0.009</b>	<b>0.009</b>	<b>0.013</b>
	<b>Data Recovery %</b>	<b>95</b>	<b>96</b>	<b>95</b>	<b>84</b>	<b>95</b>	<b>88</b>	<b>94</b>	<b>94</b>	<b>95</b>	<b>94</b>	<b>95</b>	<b>90</b>	<b>93</b>	
	<b>Maximum</b>	<b>0.036</b>	<b>0.030</b>	<b>0.061</b>	<b>0.059</b>	<b>0.047</b>	<b>0.042</b>	<b>0.038</b>	<b>0.040</b>	<b>0.041</b>	<b>0.046</b>	<b>0.057</b>	<b>0.029</b>	<b>0.061</b>	
EAST	Alphington	Average	0.007	0.007	0.010	0.013	0.015	0.013	0.014	0.014	0.011	0.011	0.008	0.008	0.011
		Data Recovery %	94	95	95	93	95	85	94	93	95	94	95	95	93
		Maximum	0.027	0.030	0.043	0.060	0.044	0.036	0.035	0.036	0.033	0.041	0.056	0.028	0.060
	Box Hill	Average	0.006	0.006	0.008	0.011	0.013	0.000	0.012	0.013	0.008	0.008	0.007	0.007	0.009
		Data Recovery %	94	95	95	93	95	58	95	94	95	94	95	95	92
		Maximum	0.025	0.024	0.038	0.052	0.033	0.000	0.031	0.034	0.028	0.035	0.037	0.023	0.052
	Brighton	Average	0.006	0.006	0.009	0.012	0.015	0.012	0.014	0.011	0.012	0.010	0.007	0.006	0.010
		Data Recovery %	95	95	95	95	95	95	96	95	85	94	96	94	94
		Maximum	0.030	0.029	0.039	0.053	0.042	0.037	0.051	0.037	0.041	0.042	0.043	0.023	0.053
	Dandenong	Average	0.008	0.009	0.010	0.013	0.015	0.013	0.014	0.012	0.011	0.009	0.006	0.006	0.010
		Data Recovery %	95	95	94	95	95	95	95	95	95	95	96	95	95
		Maximum	0.034	0.035	0.047	0.063	0.043	0.042	0.049	0.045	0.044	0.039	0.034	0.027	0.063
	Mooroolbark	Average	0.005	0.006	0.009	0.009	0.010	0.008	0.008	0.008	0.006	0.008	0.005	0.005	0.007
Data Recovery %		81	95	94	95	95	95	94	95	95	95	94	95	94	
Maximum		0.032	0.026	0.042	0.050	0.034	0.026	0.027	0.027	0.029	0.028	0.066	0.026	0.066	
	<b>Region Summary</b>	<b>Average</b>	<b>0.006</b>	<b>0.007</b>	<b>0.009</b>	<b>0.012</b>	<b>0.014</b>	<b>0.010</b>	<b>0.013</b>	<b>0.009</b>	<b>0.009</b>	<b>0.007</b>	<b>0.006</b>	<b>0.009</b>	
	<b>Data Recovery %</b>	<b>92</b>	<b>95</b>	<b>95</b>	<b>95</b>	<b>95</b>	<b>86</b>	<b>95</b>	<b>94</b>	<b>93</b>	<b>94</b>	<b>76</b>	<b>95</b>	<b>92</b>	
	<b>Maximum</b>	<b>0.034</b>	<b>0.035</b>	<b>0.047</b>	<b>0.063</b>	<b>0.044</b>	<b>0.042</b>	<b>0.051</b>	<b>0.045</b>	<b>0.044</b>	<b>0.042</b>	<b>0.066</b>	<b>0.028</b>	<b>0.066</b>	
WEST	AltonaNorth	Average	0.005	0.005	0.010	0.012	0.015	0.012	0.014	0.011	0.010	0.008	0.007	0.005	0.010
		Data Recovery %	95	95	95	95	94	94	94	95	94	94	94	94	95
		Maximum	0.035	0.034	0.052	0.058	0.043	0.041	0.041	0.036	0.039	0.039	0.045	0.029	0.058
	Deer Park	Average	0.007	0.006	0.009	0.011	0.012	0.012	0.007	0.008	0.008	0.008	0.007	0.006	0.008
		Data Recovery %	94	95	95	94	94	74	95	90	95	94	95	95	93
		Maximum	0.031	0.030	0.051	0.054	0.045	0.045	0.036	0.032	0.038	0.044	0.038	0.035	0.054
	Footscray	Average	0.008	0.008	0.013	0.015	0.017	0.014	0.014	0.013	0.011	0.011	0.010	0.009	0.012
		Data Recovery %	95	95	95	95	95	94	95	94	95	95	94	94	95
		Maximum	0.037	0.035	0.064	0.062	0.047	0.043	0.041	0.035	0.041	0.046	0.047	0.033	0.064
	Pt.Cook	Average	0.003	0.002	0.006	0.007	0.010	0.008	0.010	0.007	0.007	0.006	0.004	0.003	0.006
		Data Recovery %	95	95	94	95	93	94	95	95	96	94	93	95	94
		Maximum	0.034	0.028	0.035	0.065	0.048	0.034	0.038	0.031	0.035	0.036	0.037	0.026	0.065
		<b>Region Summary</b>	<b>Average</b>	<b>0.006</b>	<b>0.005</b>	<b>0.009</b>	<b>0.011</b>	<b>0.014</b>	<b>0.011</b>	<b>0.011</b>	<b>0.010</b>	<b>0.009</b>	<b>0.008</b>	<b>0.007</b>	<b>0.006</b>
	<b>Data Recovery %</b>	<b>95</b>	<b>95</b>	<b>95</b>	<b>95</b>	<b>94</b>	<b>89</b>	<b>95</b>	<b>94</b>	<b>95</b>	<b>94</b>	<b>94</b>	<b>95</b>	<b>94</b>	
	<b>Maximum</b>	<b>0.037</b>	<b>0.035</b>	<b>0.064</b>	<b>0.065</b>	<b>0.048</b>	<b>0.043</b>	<b>0.041</b>	<b>0.036</b>	<b>0.041</b>	<b>0.046</b>	<b>0.047</b>	<b>0.035</b>	<b>0.065</b>	
GEELONG	GeelongSouth	Average	0.003	0.003	0.006	0.008	0.010	0.007	0.009	0.007	0.007	0.006	0.004	0.003	0.006
		Data Recovery %	95	95	95	95	94	95	95	95	95	94	93	95	95
		Maximum	0.019	0.024	0.040	0.052	0.041	0.030	0.041	0.029	0.031	0.033	0.027	0.019	0.052
	<b>Region Summary</b>	<b>Average</b>	<b>0.003</b>	<b>0.003</b>	<b>0.006</b>	<b>0.008</b>	<b>0.010</b>	<b>0.007</b>	<b>0.009</b>	<b>0.007</b>	<b>0.007</b>	<b>0.006</b>	<b>0.004</b>	<b>0.003</b>	<b>0.006</b>
	<b>Data Recovery %</b>	<b>95</b>	<b>95</b>	<b>95</b>	<b>95</b>	<b>94</b>	<b>95</b>	<b>95</b>	<b>95</b>	<b>95</b>	<b>94</b>	<b>93</b>	<b>95</b>	<b>95</b>	
	<b>Maximum</b>	<b>0.019</b>	<b>0.024</b>	<b>0.040</b>	<b>0.052</b>	<b>0.041</b>	<b>0.030</b>	<b>0.041</b>	<b>0.029</b>	<b>0.031</b>	<b>0.033</b>	<b>0.027</b>	<b>0.019</b>	<b>0.052</b>	
LATROBE VALLEY	Moe	Average	0.005	0.005	0.006	0.008	0.008	0.007	0.007	0.007	0.007	0.006	0.004	0.003	0.006
		Data Recovery %	96	94	96	95	96	96	96	95	95	95	95	95	95
		Maximum	0.027	0.020	0.029	0.046	0.028	0.026	0.026	0.023	0.023	0.020	0.016	0.018	0.046
	Traralgon	Average	0.004	0.005	0.007	0.009	0.010	0.009	0.010	0.008	0.007	0.006	0.005	0.004	0.007
		Data Recovery %	95	96	95	96	95	96	93	95	95	96	95	96	95
		Maximum	0.020	0.016	0.028	0.039	0.033	0.028	0.030	0.028	0.027	0.039	0.028	0.020	0.039
<b>Region Summary</b>	<b>Average</b>	<b>0.005</b>	<b>0.005</b>	<b>0.006</b>	<b>0.008</b>	<b>0.009</b>	<b>0.008</b>	<b>0.009</b>	<b>0.007</b>	<b>0.007</b>	<b>0.006</b>	<b>0.004</b>	<b>0.004</b>	<b>0.007</b>	
	<b>Data Recovery %</b>	<b>95</b>	<b>95</b>	<b>95</b>	<b>95</b>	<b>95</b>	<b>96</b>	<b>94</b>	<b>95</b>	<b>95</b>	<b>95</b>	<b>95</b>	<b>96</b>	<b>95</b>	
	<b>Maximum</b>	<b>0.027</b>	<b>0.020</b>	<b>0.029</b>	<b>0.046</b>	<b>0.033</b>	<b>0.028</b>	<b>0.030</b>	<b>0.028</b>	<b>0.027</b>	<b>0.039</b>	<b>0.028</b>	<b>0.020</b>	<b>0.046</b>	

Note: Monthly maxima and averages for individual stations are not reported if data recovery is <75% (a maximum is recorded, however, if there has been an exceedence of a policy objective)

1-Hour Sulfur Dioxide			Policy Objective = 0.20 ppm													
Region	Station	1 Hour Average(ppm)	Jan	Feb	Mar	Apr	May	Jun	Jul	Aug	Sep	Oct	Nov	Dec	Annual	
EAST	Alphington	Average	0.001	0.001	0.001	0.001	0.001	0.001	0.001	0.001	0.001	0.001	0.001	0.001	0.001	0.001
		Data Recovery %	90	91	91	89	91	90	90	91	90	89	84	87	89	89
		Maximum	0.008	0.007	0.010	0.009	0.010	0.012	0.007	0.008	0.014	0.005	0.006	0.010	0.014	0.014
	Box.Hill	Average	0.000	0.000	0.000	0.001	0.001	0.001	0.001	0.000	0.001	0.000	0.000	0.000	0.000	0.000
		Data Recovery %	90	91	90	91	91	89	89	90	91	89	87	91	90	90
		Maximum	0.004	0.005	0.008	0.004	0.005	0.006	0.005	0.003	0.007	0.003	0.004	0.005	0.008	0.008
<b>Region Summary</b>		<b>Average</b>	<b>0.001</b>	<b>0.001</b>	<b>0.001</b>	<b>0.001</b>	<b>0.001</b>	<b>0.001</b>	<b>0.001</b>	<b>0.001</b>	<b>0.001</b>	<b>0.000</b>	<b>0.000</b>	<b>0.001</b>	<b>0.001</b>	
		<b>Data Recovery %</b>	<b>90</b>	<b>91</b>	<b>91</b>	<b>90</b>	<b>91</b>	<b>90</b>	<b>90</b>	<b>90</b>	<b>89</b>	<b>86</b>	<b>89</b>	<b>90</b>	<b>90</b>	
		<b>Maximum</b>	<b>0.008</b>	<b>0.007</b>	<b>0.010</b>	<b>0.009</b>	<b>0.010</b>	<b>0.012</b>	<b>0.007</b>	<b>0.008</b>	<b>0.014</b>	<b>0.005</b>	<b>0.006</b>	<b>0.010</b>	<b>0.014</b>	
WEST	AltonaNorth	Average	0.001	0.002	0.002	0.001	0.002	0.003	0.001	0.002	0.002	0.001	0.003	0.002	0.002	
		Data Recovery %	90	91	90	91	90	89	90	90	90	89	91	87	90	
		Maximum	0.029	0.028	0.022	0.023	0.026	0.036	0.029	0.039	0.059	0.024	0.051	0.042	0.059	
	Footscray	Average	0.001	0.001	0.002	0.001	0.002		0.001	0.001	0.001	0.001	0.001	0.001	0.001	
		Data Recovery %	95	95	95	95	95	72	93	94	95	95	93	94	93	
		Maximum	0.014	0.017	0.022	0.026	0.029	0.030	0.020	0.026	0.025	0.023	0.022	0.014	0.030	
<b>Region Summary</b>		<b>Average</b>	<b>0.001</b>	<b>0.001</b>	<b>0.002</b>	<b>0.001</b>	<b>0.002</b>	<b>0.002</b>	<b>0.001</b>	<b>0.001</b>	<b>0.001</b>	<b>0.001</b>	<b>0.001</b>	<b>0.002</b>	<b>0.002</b>	
		<b>Data Recovery %</b>	<b>92</b>	<b>93</b>	<b>92</b>	<b>93</b>	<b>92</b>	<b>80</b>	<b>91</b>	<b>92</b>	<b>92</b>	<b>92</b>	<b>92</b>	<b>91</b>	<b>91</b>	
		<b>Maximum</b>	<b>0.029</b>	<b>0.028</b>	<b>0.022</b>	<b>0.026</b>	<b>0.029</b>	<b>0.036</b>	<b>0.029</b>	<b>0.039</b>	<b>0.059</b>	<b>0.024</b>	<b>0.051</b>	<b>0.042</b>	<b>0.059</b>	
GEELONG	GeelongSouth	Average	0.001	0.001	0.002	0.001	0.001	0.001	0.001	0.001	0.001	0.001	0.001	0.001	0.001	
		Data Recovery %	92	92	90	91	90	83	90	81	95	94	93	94	90	
		Maximum	0.046	0.050	0.032	0.033	0.016	0.021	0.018	0.018	0.021	0.016	0.035	0.013	0.050	
	<b>Region Summary</b>		<b>Average</b>	<b>0.001</b>	<b>0.001</b>	<b>0.002</b>	<b>0.001</b>	<b>0.001</b>	<b>0.001</b>	<b>0.001</b>	<b>0.001</b>	<b>0.001</b>	<b>0.001</b>	<b>0.001</b>	<b>0.001</b>	<b>0.001</b>
		<b>Data Recovery %</b>	<b>92</b>	<b>92</b>	<b>90</b>	<b>91</b>	<b>90</b>	<b>83</b>	<b>90</b>	<b>81</b>	<b>95</b>	<b>94</b>	<b>93</b>	<b>94</b>	<b>90</b>	
		<b>Maximum</b>	<b>0.046</b>	<b>0.050</b>	<b>0.032</b>	<b>0.033</b>	<b>0.016</b>	<b>0.021</b>	<b>0.018</b>	<b>0.018</b>	<b>0.021</b>	<b>0.016</b>	<b>0.035</b>	<b>0.013</b>	<b>0.050</b>	
LATROBE VALLEY	Moe	Average	0.002	0.002	0.002	0.001	0.001	0.001	0.001	0.000	0.001	0.001	0.001	0.001	0.001	
		Data Recovery %	96	94	96	95	96	96	96	95	92	95	95	96	95	
		Maximum	0.033	0.024	0.023	0.016	0.010	0.014	0.010	0.026	0.024	0.010	0.032	0.023	0.033	
	Traralgon	Average	0.003	0.002	0.002	0.002	0.003	0.002	0.002	0.002	0.002	0.002	0.002	0.003	0.002	
		Data Recovery %	95	96	95	96	95	96	93	89	84	95	95	95	94	
		Maximum	0.059	0.016	0.029	0.033	0.027	0.012	0.013	0.017	0.015	0.020	0.170	0.057	0.170	
<b>Region Summary</b>		<b>Average</b>	<b>0.002</b>	<b>0.002</b>	<b>0.002</b>	<b>0.002</b>	<b>0.002</b>	<b>0.001</b>	<b>0.001</b>	<b>0.001</b>	<b>0.002</b>	<b>0.002</b>	<b>0.002</b>	<b>0.002</b>	<b>0.002</b>	
		<b>Data Recovery %</b>	<b>95</b>	<b>95</b>	<b>95</b>	<b>95</b>	<b>96</b>	<b>96</b>	<b>94</b>	<b>92</b>	<b>88</b>	<b>95</b>	<b>95</b>	<b>96</b>	<b>94</b>	
		<b>Maximum</b>	<b>0.059</b>	<b>0.024</b>	<b>0.029</b>	<b>0.033</b>	<b>0.027</b>	<b>0.014</b>	<b>0.013</b>	<b>0.026</b>	<b>0.024</b>	<b>0.020</b>	<b>0.170</b>	<b>0.057</b>	<b>0.170</b>	

Note: Monthly maxima and averages for individual stations are not reported if data recovery is <75% (a maximum is recorded, however, if there has been an exceedence of a policy objective)

24-Hour Sulfur Dioxide			Policy Objective = 0.08 ppm												
Region	Station	24 Hour Average (ppm)	Jan	Feb	Mar	Apr	May	Jun	Jul	Aug	Sep	Oct	Nov	Dec	Annual
EAST	Alphington	Maximum	0.002	0.002	0.002	0.002	0.003	0.003	0.002	0.002	0.005	0.001	0.002	0.002	0.005
	Box.Hill	Maximum	0.002	0.001	0.001	0.001	0.002	0.002	0.002	0.002	0.002	0.001	0.001	0.001	0.002
	<b>Region Summary</b>		<b>Maximum</b>	<b>0.002</b>	<b>0.002</b>	<b>0.002</b>	<b>0.002</b>	<b>0.003</b>	<b>0.003</b>	<b>0.002</b>	<b>0.002</b>	<b>0.005</b>	<b>0.001</b>	<b>0.002</b>	<b>0.002</b>
WEST	Footscray	Maximum	0.003	0.003	0.006	0.006	0.005	0.006	0.003	0.003	0.004	0.003	0.004	0.004	0.006
	AltonaNorth	Maximum	0.005	0.007	0.005	0.004	0.003	0.009	0.006	0.009	0.006	0.004	0.015	0.012	0.015
	<b>Region Summary</b>		<b>Maximum</b>	<b>0.005</b>	<b>0.007</b>	<b>0.006</b>	<b>0.006</b>	<b>0.005</b>	<b>0.009</b>	<b>0.006</b>	<b>0.009</b>	<b>0.006</b>	<b>0.004</b>	<b>0.015</b>	<b>0.012</b>
GEELONG	GeelongSouth	Maximum	0.004	0.003	0.007	0.004	0.004	0.007	0.003	0.003	0.002	0.004	0.004	0.002	0.007
	<b>Region Summary</b>		<b>Maximum</b>	<b>0.017</b>	<b>0.003</b>	<b>0.010</b>	<b>0.010</b>	<b>0.008</b>	<b>0.013</b>	<b>0.006</b>	<b>0.013</b>	<b>0.021</b>	<b>0.013</b>	<b>0.011</b>	<b>0.004</b>
LATROBE VALLEY	Moe	Maximum	0.005	0.006	0.007	0.005	0.002	0.002	0.003	0.004	0.005	0.003	0.005	0.007	0.007
	Traralgon	Maximum	0.008	0.004	0.007	0.007	0.007	0.004	0.008	0.006	0.004	0.004	0.026	0.009	0.026
	<b>Region Summary</b>		<b>Maximum</b>	<b>0.008</b>	<b>0.006</b>	<b>0.007</b>	<b>0.007</b>	<b>0.007</b>	<b>0.004</b>	<b>0.003</b>	<b>0.006</b>	<b>0.005</b>	<b>0.004</b>	<b>0.026</b>	<b>0.009</b>