



## WORKS APPROVAL

### LINKING MELBOURNE AUTHORITY

Holder of

**Works Approval:** 1001390

**Issued:**


**ABN:** 54 293 070 013

**Registered Address:** LEVEL 20,  
180 LONSDALE STREET,  
MELBOURNE VIC 3000

**Premises Address:** EAST WEST LINK TUNNELS  
ROYAL PARK TO CLIFTON HILL VIC 3068

**Scheduled Categories:** L03 Tunnel Ventilation Systems

**Description:** This approval allows the construction of the East West Link road tunnels between Royal Park and Clifton Hill, and the associated tunnel ventilation system.

  
.....  
**MATTHEW GUY MLC**  
Minister for Planning

30.6.19

Granted under the *Major Transport Projects Facilitation Act 2009*, section 77  
(see also *Environment Protection Act 1970*, section 19B)

## PREAMBLE

### Works Approvals

**Why works approvals are issued:** Section 19A of the *Environment Protection Act 1970* ("the EP Act") requires the occupier of a "scheduled premises" to obtain works approval to construct or install plant and equipment in order to discharge, handle, treat or dispose of waste to the environment. These types of premises are defined in the *Environment Protection (Scheduled Premises and Exemptions) Regulations 2007* ("the Regulations").

The *Major Transport Projects Facilitation Act 2009* ("the MTPF Act") provides that a Works Approval may be issued by the Planning Minister, rather than by EPA, for projects assessed under that Act.

**When works approvals are issued:** A works approval is issued when the responsible authority is satisfied that an applicant has put in place measures to protect the environment. Works approvals allow construction of works to occur and set control measures to minimise a site's environmental risk. A works approval can be amended in response to changes in standards and site activities. Works approval holders must submit reports if required by a condition of the approval.

### Works Approval information and obligations

For the purposes of this works approval "You" means the works approval holder identified on the first page of this works approval at the "premises" identified on the first page and represented in Schedule 1.

**Compliance:** At all times, you must comply with the EP Act and all policies and regulations administered by EPA, including the conditions of the works approval. Strict penalties apply for non-compliance with any part of your works approval.

### Works Approval structure

**Structure:** Your works approval has multiple parts:

- Works conditions - setting out requirements for construction or installation;
- Schedule 1 - plan of premises showing works premises and general locality.

## CONDITIONS

### General Conditions

- WA\_G1 Subject to the following conditions, this approval allows the construction of the following works and associated equipment - the East West Link (Eastern Section) road tunnels and associated ventilation systems and structures (including the ventilation stacks).
- WA\_G2 The works must be constructed in accordance with the application accepted on 31 October 2013 as augmented or amended by additional information supplied between 1 November 2013 and 15 April 2014 ("the application") except that, in the event of any inconsistency arising between the application and the conditions of this approval, the conditions of this approval shall apply.
- WA\_G4 This approval expires:  
(a) on the issue or amendment of a licence relating to all works covered by this approval;  
(b) when EPA advises in writing that all works covered by this approval have been satisfactorily completed and no licence is required; or  
(c) two years from the date of issue unless the works have been commenced by that date to the satisfaction of EPA.

### Works Conditions

- WA\_W1 Before commencing construction of the following components of the works, you must provide to EPA a report or reports with the plans and specifications of those components, including details of:  
(a) the tunnel ventilation system and exhaust stacks, including any mid-tunnel air intake, showing measures to be taken to ensure compliance with State environment protection policy (Air Quality Management) and ensure impacts are equivalent to or less than the Reference Project assessed for this Works Approval;  
(b) the tunnel ventilation system, showing measures to be taken to ensure that the tunnel can achieve zero portal emissions during operation;  
(c) the tunnel ventilation and lighting systems, showing compliance with best practice requirements of the Protocol for Environmental Management "Greenhouse Gas Emissions and Energy Efficiency in Industry"; and  
(d) the tunnel ventilation system, showing measures to be taken to ensure compliance with the State environment protection policy (Control of Noise from Commerce, Industry and Trade) No. N-1.
- WA\_W2 You must not commence construction of those parts of the works for which reports are required by condition WA\_W1 until written EPA approval of those reports has been received.
- WA\_W3 Where any reports specified in condition WA\_W1 and approved by EPA differ from the application, the works must be constructed in accordance with those approved reports.
- WA\_W4 You must notify EPA when the construction of the works covered by this approval has been commenced.



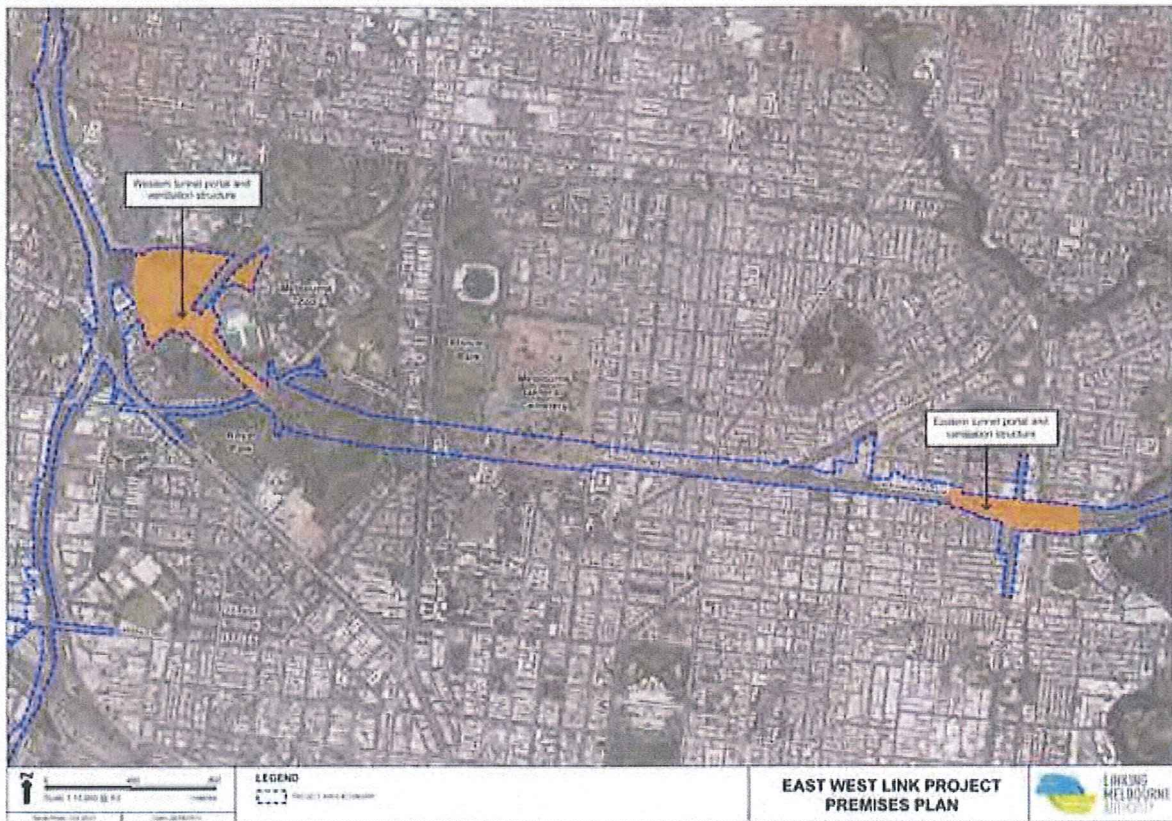
- WA\_W5            You must notify EPA when the construction of the works covered by this approval has been completed.
- WA\_W7            You must not commission or operate the works without the written approval of EPA.
- WA\_W12.1        You must install all exhaust stacks so that provisions for sampling are included in accordance with EPA Publication 440.1 "A guide to the Sampling and Analysis of Air Emissions and Air Quality", or as approved by EPA.

### Reporting Conditions

---

- WA\_R1.1.1        At least 18 months before the commencement of any commissioning, you must provide to EPA a plan that includes:
- (a) a monitoring program for in-tunnel air quality and ventilation stack emissions;
  - (b) a monitoring program for ambient air quality, including periods before and after the commencement of tunnel operation; and
  - (c) a monitoring program for noise impacts, including periods before and after the commencement of tunnel operation.
- WA\_R5            You must not commence operation of the works until written EPA approval of the plan required by condition WA\_R1 has been received.

## SCHEDULE 1 – PREMISES PLAN



Works Approval:	1001390
Company Name:	LINKING MELBOURNE AUTHORITY
ABN:	54 293 070 013
Premises Address:	EAST WEST LINK TUNNELS, ROYAL PARK TO CLIFTON HILL VIC 3068
Granted:	
Before relying on the information in this map, users should carefully evaluate its accuracy, currency, completeness and relevance for their purposes, and should obtain any appropriate professional advice relevant to their particular circumstances.	