



# VICTORIA'S AIR QUALITY 2009 AIR MONITORING DATA

## **Section 1 - Report Card**

an assessment of compliance with the air quality goals and objectives

## **Section 2 - Trend analysis**

an update of the overall trends in air quality in Melbourne

## **Section 3 - Monthly Data Tables**

tabulated monthly air quality statistics

## Section 1- Report Card

### Compliance with Air Quality Objectives

Assessment of Victoria's air quality on a station-by-station basis

The numbers in the table indicate the number of days the objectives were not met.

Region	Station	Particles			Ozone		NO <sub>2</sub>		CO	SO <sub>2</sub>			
		Visibility	PM <sub>10</sub>	PM <sub>2.5</sub>	1 hr	4 hr	1 hr	24 hr	8hr	1 hr	24 hr	1 year	
M E L B O U R N E	City	Richmond	25	8				0	0	0			
	East	Alphington	33	7	2	0	0	0	0	0	0	0	0
		Box Hill	21	6		0	0	0	0	0	0	0	0
		Brighton	25	6		0	0	0	0				
		Dandenong	27	12		0	0	0	0				
		Mooroolbark	42	20		0	0	0	0	0			
	West	Altona North				0*	1*	0	0		0	0	0
		Deer Park	25	12		0	0	0	0				
		Footscray	21	13	1	0	0	0	0	0	0	0	0
		Melton				0	0						
Pt Cook		21			2	2	0	0					
GEELONG	Geelong South	16	12		0	0	0	0	0	0	0	0	
	Pt Henry				0	1							
LATROBE VALLEY	Moe	25	7		0*	0*	0*	0*		0*	0*	0*	
	Traralgon	23	5		1	0	0	0		0	0	0	

Objective and Goal met	Exceeded the Objective, but met the Goal	Goal not Met	*	Insufficient data to demonstrate compliance
------------------------	--	--------------	---	---

\* Monitoring for this pollutant did not meet the 75% data capture target (ie. data capture in each quarter of the year)

On an annual basis, EPA assesses the air quality monitored at each station against the state and national air quality objectives and goals.

The numbers presented in the Table show the number of days that an air quality objective was not met.

Shading is used to indicate the assessment against the goals, with:

- *Green shading* indicating that the 2009 goal was met;
- *Red shading*, that the 2009 goal was not met; and
- *Yellow shading*, that whilst the 2009 goal was met, there were still days when the objective was not met

Monitoring instruments not meeting the data capture target are indicated by an asterisk and cells are not shaded yellow or green.

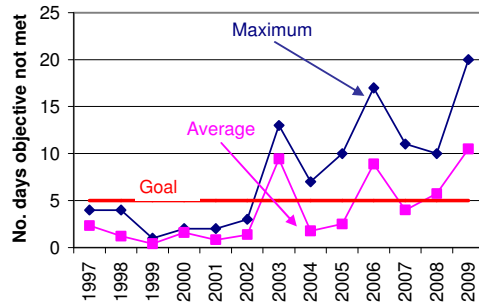
A blank cell indicates that monitoring for a particular pollutant was not performed at this station.

Note, for PM<sub>2.5</sub> there is no 2009 goal and monitoring occurs on a one-day-in-three basis.

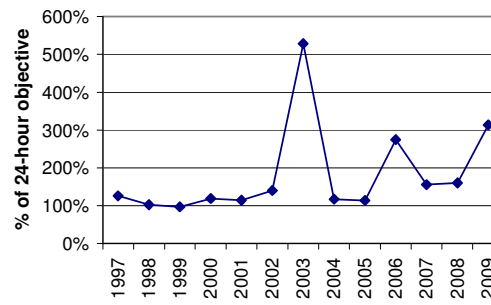
## Section 2 - Trend analysis

### Trends of air quality in Melbourne

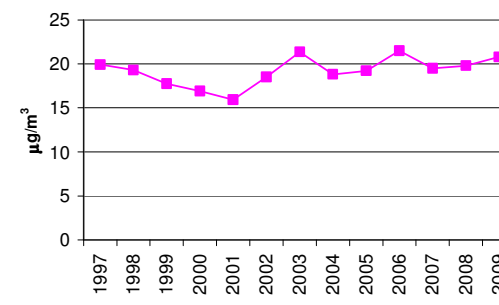
#### 1. Particles smaller than 10µm (PM<sub>10</sub>)



(a) Days not meeting the PM<sub>10</sub> objective

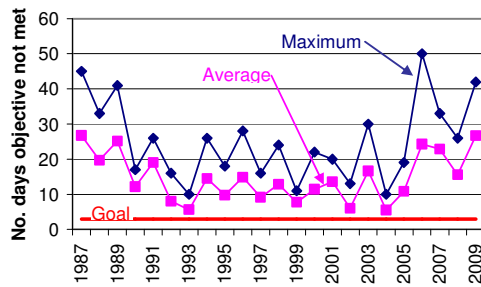


(b) Maximum 24-hour PM<sub>10</sub>

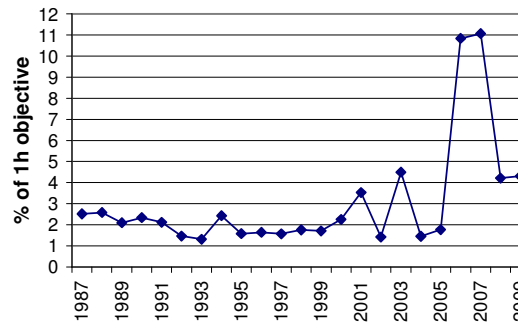


(c) Annual average PM<sub>10</sub>

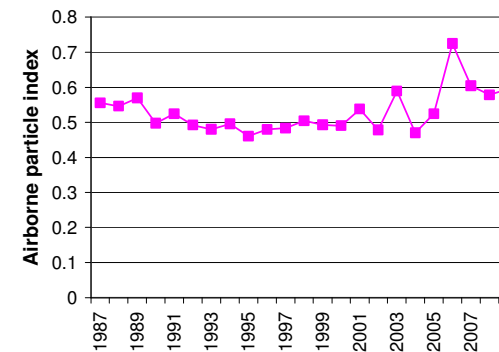
#### 2. Visibility measured as API



(a) Days not meeting the visibility objective



(b) Maximum 1-hour API

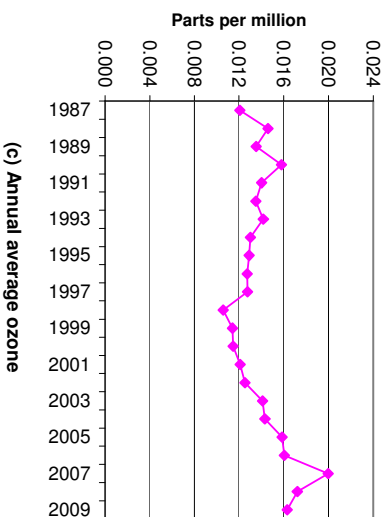
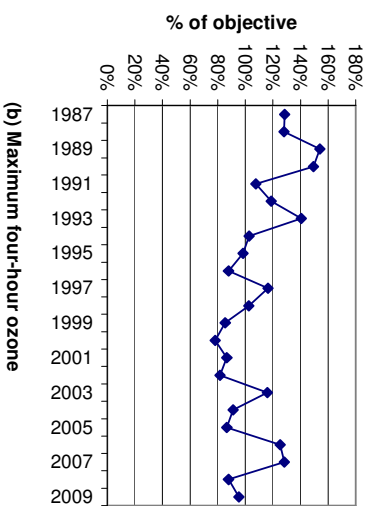
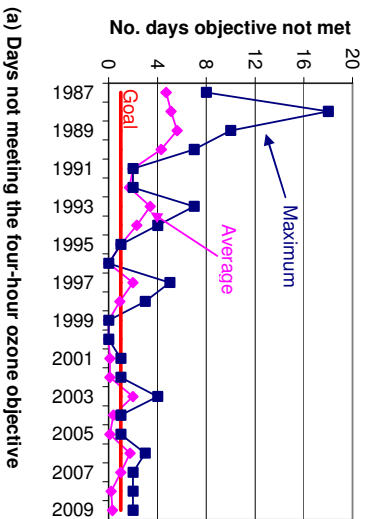


(c) Annual average API

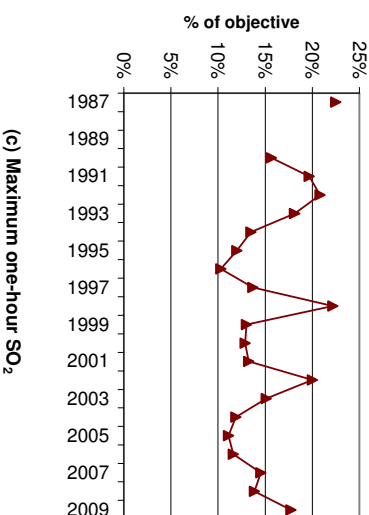
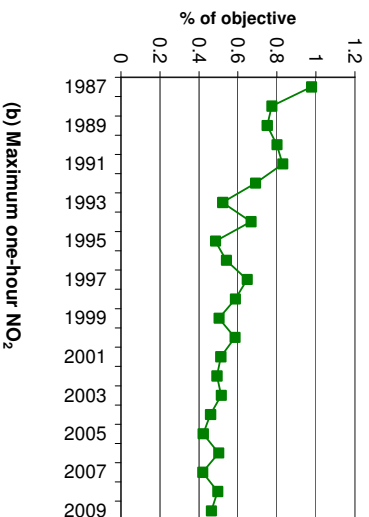
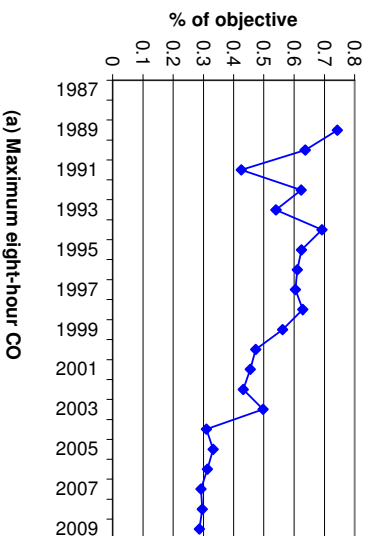
A range of trend parameters for Melbourne are presented:

- Days not meeting the objective – Two values for this parameter are presented. The maximum number gives the value for the station recording the highest number of days not meeting the air quality objective each year (that is, the worst performing station that year). The average number (calculated by averaging the number of days at each station in Melbourne) is a better indicator for how Melbourne is performing overall rather than simply looking at an individual station.
- Maximum pollutant levels – This looks at the highest pollutant levels recorded over the year. The value is calculated by averaging the maximum pollutant levels recorded at each monitoring station in Melbourne over any one year.
- Average pollutant levels – In addition to the peak levels, we are also interested in the average pollutant level across Melbourne for the year. This is calculated by averaging levels from each station.

### 3. Ozone



### 4. Other gases



## Section 3- Monthly Data Tables

1-Hour Visibility (as API)			Policy Objective = 2.35													
Region	Station	1 Hour Average	Jan	Feb	Mar	Apr	May	Jun	Jul	Aug	Sep	Oct	Nov	Dec	Annual	
CITY	Richmond	Average	0.52	0.94	0.64	0.75	0.91	0.77	0.48	0.48	0.45	0.47	0.61	0.43	0.62	
		Data Recovery %	91	96	94	95	95	95	95	95	95	95	95	95	95	95
		No. of Exceedences	0	10	3	3	5	3	0	0	0	0	0	1	0	25
	Maximum	1.32	9.04	3.43	5.90	4.51	3.15	1.72	2.00	1.02	1.11	2.81	1.29	9.04		
	Region Summary	Average	0.52	0.94	0.64	0.75	0.91	0.77	0.48	0.48	0.45	0.47	0.61	0.43	0.62	
		Data Recovery %	91	96	94	95	95	95	95	95	95	95	95	95	95	
		Maximum	1.32	9.04	3.43	5.90	4.51	3.15	1.72	2.00	1.02	1.11	2.81	1.29	9.04	
EAST	Alphington	Average	0.50	0.96	0.62	0.73	0.96	0.85	0.49	0.47	0.44	0.43	0.57	0.42	0.62	
		Data Recovery %	94	95	95	95	95	95	95	95	95	94	95	95	95	
		No. of Exceedences	0	10	2	2	9	10	0	0	0	0	0	0	33	
			Maximum	1.39	8.57	3.45	5.84	4.48	3.40	1.65	1.86	1.26	1.34	2.15	1.56	8.57
	Box.Hill	Average	0.42	0.94	0.52	0.67	0.81	0.76	0.46	0.40	0.37	0.39	0.58	0.44	0.56	
		Data Recovery %	96	95	95	95	95	95	95	95	95	94	95	95	95	
		No. of Exceedences	0	9	2	2	3	5	0	0	0	0	0	0	21	
			Maximum	1.95	11.06	3.63	7.30	4.22	3.60	1.85	1.88	1.09	1.28	2.24	1.60	11.06
	Brighton	Average	0.54	0.92	0.68	0.73	0.88	0.73	0.46	0.46	0.44	0.43	0.64	0.45	0.61	
		Data Recovery %	95	95	94	95	96	89	95	95	95	95	95	95	95	
		No. of Exceedences	0	8	4	3	7	2	0	0	0	0	1	0	25	
			Maximum	1.80	9.15	6.77	7.07	4.28	3.24	1.93	2.00	1.24	1.41	2.73	1.47	9.15
Dandenong	Average	0.49	0.88	0.69	0.83	0.92	0.76	0.44	0.42	0.43	0.46	0.60	0.42	0.61		
	Data Recovery %	90	96	92	85	94	95	95	95	95	95	95	93	93		
	No. of Exceedences	0	8	3	4	8	4	0	0	0	0	0	0	27		
		Maximum	1.25	8.92	7.15	8.18	5.23	2.84	1.65	1.94	1.27	1.06	2.29	1.36	8.92	
Mooroolbark	Average	0.45	1.45	0.63	0.94	1.01	0.84	0.51	0.52	0.46	0.49	0.66	0.52	0.70		
	Data Recovery %	95	95	95	86	95	95	95	95	89	95	80	96	93		
	No. of Exceedences	0	12	3	6	9	6	4	1	0	0	1	0	42		
		Maximum	1.42	19.37	4.21	10.82	4.97	3.82	3.08	2.68	1.60	2.18	2.70	1.54	19.37	
	Region Summary	Average	0.48	1.03	0.63	0.78	0.91	0.79	0.47	0.45	0.43	0.44	0.61	0.45	0.62	
		Data Recovery %	94	95	94	91	95	94	95	94	95	92	95	94		
		Maximum	1.95	19.37	7.15	10.82	5.23	3.82	3.08	2.68	1.60	2.18	2.73	1.60	19.37	
WEST	Deer Park	Average	0.49	0.90	0.69	0.66	0.74	0.63	0.38	0.40	0.40	0.41	0.61	0.44	0.56	
		Data Recovery %	95	95	94	95	95	95	94	95	95	94	95	94	95	
		No. of Exceedences	0	10	4	3	4	2	0	0	0	0	1	1	25	
			Maximum	1.37	7.28	6.29	4.48	4.50	3.23	1.64	1.41	1.55	1.75	2.50	6.27	7.28
	Footscray	Average	0.50	0.90	0.67	0.67	0.80	0.48	0.41	0.42	0.40	0.43	0.59	0.43	0.56	
		Data Recovery %	95	95	95	95	95	95	95	95	95	95	96	95	95	
		No. of Exceedences	1	9	5	2	4	0	0	0	0	0	0	0	21	
			Maximum	2.70	8.99	5.87	3.03	5.37	1.99	1.46	1.39	1.03	1.39	2.10	1.29	8.99
	Pt.Cook	Average	0.46	0.74	0.63	0.61	0.69	0.58	0.38	0.42	0.38	0.40	0.61	0.42	0.52	
		Data Recovery %	94	85	95	93	94	95	95	95	95	85	94	94	93	
		No. of Exceedences	0	7	4	3	5	2	0	0	0	0	0	0	21	
			Maximum	1.35	7.59	6.91	4.59	3.66	2.49	1.25	1.62	1.19	1.68	2.32	1.55	7.59
	Region Summary	Average	0.48	0.85	0.66	0.65	0.75	0.56	0.39	0.41	0.39	0.41	0.60	0.43	0.55	
		Data Recovery %	95	92	95	94	95	95	95	95	95	91	95	95	94	
		Maximum	2.7	8.99	6.91	4.59	5.37	3.23	1.64	1.62	1.55	1.75	2.50	6.27	8.99	
GEELONG	GeelongSouth	Average	0.53	0.73	0.68	0.65	0.72	0.63	0.40	0.41	0.40	0.42	0.53	0.44	0.54	
		Data Recovery %	95	95	95	94	95	95	95	95	95	95	95	95	95	
		No. of Exceedences	0	4	3	1	5	3	0	0	0	0	0	0	16	
			Maximum	1.66	6.41	5.27	4.74	7.19	2.79	1.70	1.10	0.86	1.60	1.52	1.26	7.19
	Region Summary	Average	0.53	0.73	0.68	0.65	0.72	0.63	0.40	0.41	0.40	0.42	0.53	0.44	0.54	
		Data Recovery %	95	95	95	94	95	95	95	95	95	95	95	95		
		Maximum	1.66	6.41	5.27	4.74	7.19	2.79	1.70	1.10	0.86	1.60	1.52	1.26	7.19	
LATROBE VALLEY	Moe	Average	0.57	0.63	0.61	0.68	0.87	0.67	0.49	0.48	0.46	0.45			0.59	
		Data Recovery %	96	95	95	96	96	96	95	96	95	78			78	
		No. of Exceedences	3	4	3	4	6	2	1	0	1	1			25	
			Maximum	11.18	10.43	7.32	3.53	3.43	3.10	2.55	1.61	2.65	5.61		11.18	
	Traralgon	Average	0.57	0.61	0.61	0.68	0.82	0.75	0.58	0.52	0.46	0.47	0.59	0.47	0.59	
		Data Recovery %	92	92	95	96	96	96	95	95	95	96	96	95	95	
No. of Exceedences		2	5	2	4	4	3	2	0	0	1	0	0	23		
		Maximum	14.37	7.97	7.04	3.96	3.00	2.86	2.44	2.05	1.42	12.49	1.66	1.73	14.37	
	Region Summary	Average	0.57	0.62	0.61	0.68	0.84	0.71	0.54	0.50	0.46	0.46	0.59	0.47	0.59	
		Data Recovery %	94	94	95	96	96	96	95	95	95	87	96	95	95	
		Maximum	14.37	10.43	7.32	3.96	3.43	3.10	2.55	2.05	2.65	12.49	1.66	1.73	14.37	

Note: Monthly maxima and averages for individual stations are not reported if data recovery is <75% (a maximum is recorded, however, if there has been an exceedence of a policy objective)



24-Hour PM <sub>10</sub> by TEOM			Policy Objective = 50 µg/m <sup>3</sup>												
Region	Station	24 Hour Average (µg/m <sup>3</sup> )	Jan	Feb	Mar	Apr	May	Jun	Jul	Aug	Sep	Oct	Nov	Dec	Annual
CITY	Richmond	Average	25.6	28.5	23.8	20.5	21.5	16.1	14.0	15.9	17.4	16.0	21.8	17.7	19.8
		Data Recovery%	84	100	94	100	94	90	100	84	100	100	100	100	95
		No. of Exceedences	1	3	1	1	1	0	0	0	1	0	0	0	0
		Maximum	88.3	82.1	121.2	58.7	51.2	30.7	26.2	27.7	51.0	29.0	36.7	29.8	121.2
	Region Summary	Average	26	28	24	20	22	16	14	16	17	16	22	18	20
EAST	Alphington	Average	24.2	30.8	24.9	21.4	23.0	17.7	15.3	15.7	18.5	16.9	25.0	19.0	20.9
		Data Recovery%	94	100	97	100	97	100	100	94	100	97	100	100	98
		No. of Exceedences	1	2	1	1	1	0	0	0	1	0	0	0	7
	Box.Hill	Average	25.1	27.5	22.4	18.1	18.7	14.2	12.5	13.7	14.8	14.8	19.7	14.6	17.9
		Data Recovery%	97	100	100	97	100	100	100	100	100	100	100	100	99
		No. of Exceedences	1	2	1	1	1	0	0	0	1	0	0	0	6
	Brighton	Average	23.4	24.4	23.0	20.6	21.4	17.0	14.7	15.0	17.8	16.0	20.3	17.1	19.2
		Data Recovery%	100	100	94	100	100	100	100	100	100	100	100	100	99
		No. of Exceedences	1	1	1	1	1	0	0	0	1	0	0	0	6
	Dandenong	Average	27.2	32.2	27.1	24.1	22.8	18.4	15.3	15.1	17.3	19.0	27.6	18.8	21.9
		Data Recovery%	100	100	90	80	100	93	100	94	100	100	83	90	94
		No. of Exceedences	2	2	2	3	1	0	0	0	1	0	1	0	12
	Mooroolbark	Average	28.1	38.0	27.7	24.3	28.5	26.3	21.1	17.6	19.3	17.0	25.0	17.7	24.1
		Data Recovery%	100	100	100	93	100	100	100	100	100	100	83	100	98
		No. of Exceedences	2	8	1	2	2	3	1	0	0	0	1	0	20
	Region Summary	Maximum	95.4	98.2	199.7	58.4	51.7	41.9	35.5	24.2	53.4	37.1	54.3	28.9	199.7
		Average	26	31	25	22	23	19	16	15	18	17	24	17	21
		Data Recovery%	98.1	100.0	96.1	94.0	99.4	98.7	100.0	97.4	100.0	99.4	93.3	98.1	97.9
WEST	Deer Park	Average	28.5	32.1	25.6	19.2	20.0	13.3	11.2	13.1	15.9	17.6	29.7	18.5	20.2
		Data Recovery%	100	100	94	100	100	100	100	100	100	100	93	100	99
		No. of Exceedences	2	1	2	1	1	0	0	0	1	0	4	0	12
	Footscray	Average	136.2	131.0	114.6	54.8	53.4	31.5	25.0	24.2	70.8	29.9	115.3	38.8	136.2
		Data Recovery%	28.9	32.0	27.3	23.7	25.6	16.7	15.4	16.0	18.6	17.7	26.7	19.1	22.3
		No. of Exceedences	2	2	2	2	2	0	0	0	1	0	2	0	13
Region Summary	Maximum	166.5	127.8	136.6	54.9	52.8	32.1	25.0	31.7	60.0	32.4	75.5	40.3	166.5	
	Average	29	32	26	21	23	15	13	15	17	18	28	19	21	
	Data Recovery%	100.0	100.0	96.8	100.0	96.8	100.0	100.0	96.8	100.0	100.0	96.7	100.0	98.9	
GEELONG	GeelongSouth	Average	31.1	29.7	22.8	22.6	20.7	21.2	19.1	20.9	0	26	100	100	23.2
		Data Recovery%	100	100	100	97	100	100	100	100	0	0	100	100	85
		No. of Exceedences	3	1	1	2	1	1	1	0	0	0	1	1	12
	Region Summary	Maximum	154.6	120.3	81.4	63.8	54.1	55.8	55.6	35.1	0	57.7	65.5	154.6	
LATROBE VALLEY	Moe	Average	25.6	30.5	21.5	17.4	20.0	14.5	12.7	13.7	16.9	16.1	24.9	20.0	18.9
		Data Recovery%	100	100	100	100	100	100	100	100	100	100	81	100	82
		No. of Exceedences	2	2	2	0	0	0	0	0	1	0	0	0	7
	Traralgon	Average	59.8	169.6	55.0	41.0	41.1	27.1	23.0	22.2	97.1	30.8	169.6	169.6	
		Data Recovery%	26.6	24.7	22.1	17.6	21.2	17.8	17.1	16.7	18.7	16.6	21.3	17.4	19.8
		No. of Exceedences	100	100	100	100	100	100	100	100	100	100	100	100	100
Region Summary	Maximum	68.5	125.7	51.7	37.7	39.8	28.0	35.2	26.5	73.4	28.6	41.9	28.0	125.7	
	Average	26	28	22	17	21	16	15	15	18	16	21	17	19	
	Data Recovery%	100.0	100.0	100.0	100.0	100.0	100.0	100.0	100.0	100.0	100.0	90.3	100.0	100.0	

Note: (1) Monthly maxima and averages for individual stations are not reported if data recovery is <75%  
(2) Data recovery is based on the number of valid days (where hourly data capture is >75% on an individual day)

24-Hour PM <sub>10</sub> by HiVol			Policy Objective = 50 mg/m <sup>3</sup>												
Region	Station	24 Hour Average (mg/m <sup>3</sup> )	Jan	Feb	Mar	Apr	May	Jun	Jul	Aug	Sep	Oct	Nov	Dec	Annual
EAST	Alphington	Average	22.9	24.2	19.2	29.8	22.1	15.7	13.5	15.0	60	13.4	21.1	14.2	18.5
		Data Recovery %	100	100	100	60	100	100	100	100	60	100	80	100	92
		No. of Exceedences	0	0	0	1	0	0	0	0	0	0	0	0	1
		Maximum	33.2	38.6	27.3	56.4	30.8	24.5	25.0	18.8	23.4	32.1	20.6	56.4	
WEST	Footscray	Average	26.8	24.3	20.0	24.0	22.1	13.5	11.8	15.9	12.7	15.4	27.0	15.3	18.7
		Data Recovery %	100	100	100	80	80	100	100	100	100	100	80	100	95
		No. of Exceedences	0	0	0	0	0	0	0	0	0	0	0	0	0
		Maximum	43.8	36.6	27.6	43.4	34.1	22.2	22.0	19.8	19.9	23.7	40.3	21.4	43.8

Note: (1) HiVols are operated on a one day in six basis.  
(2) Data recovery is based on the number of valid days



24-Hour PM <sub>2.5</sub> by Partisol		Advisory Reporting Standard = 25 µg/m <sup>3</sup>														
Region	Station	24 Hour Average (µg/m <sup>3</sup> )	Jan	Feb	Mar	Apr	May	Jun	Jul	Aug	Sep	Oct	Nov	Dec	Annual	
EAST	Alphington	Average	6.8	12.8	8.3	10.0	12.7	10.7	6.6	6.3	5.1	5.1	7.5	6.1	8.2	
		Data Recovery %	100	100	100	100	100	100	100	100	100	100	100	100	100	100
		No. of Exceedences	0	0	0	1	1	0	0	0	0	0	0	0	0	2
		Maximum	9.6	23.7	15.1	26.9	27.0	21.6	19.1	16.2	7.4	7.7	12.3	8.3	27.0	
WEST	Footscray	Average	7.3		8.5	7.3	10.7	7.5	4.4		4.3	5.0	8.3	5.7	7.2	
		Data Recovery %	100	70	100	80	100	100	100	60	100	100	100	100	93	
		No. of Exceedences	0	0	0	0	1	0	0	0	0	0	0	0	1	
		Maximum	11.1		15.7	14.0	26.9	19.1	10.8		7.3	10.5	15.4	7.8	26.9	

**Note:** (1) Partisols are operated on a one day in three basis.  
(2) Data recovery is based on the number of valid days

24-Hour PM <sub>2.5</sub> by TEOM															
Region	Station	24 Hour Average (µg/m <sup>3</sup> )	Jan	Feb	Mar	Apr	May	Jun	Jul	Aug	Sep	Oct	Nov	Dec	Annual
EAST	Alphington	Average	5.4	10.4	6.5	6.7	9.0	6.9	4.1	3.8	3.9	4.0	6.7	4.5	6.0
		Data Recovery %	94	100	100	100	97	100	100	94	100	97	100	100	98
		Maximum	12.0	30.8	21.0	21.4	32.7	18.3	12.7	8.5	7.3	7.2	14.3	8.3	32.7
WEST	Footscray	Average	6.4	10.0	7.2	6.3	6.8	5.2	3.2	3.5	3.6	4.0	7.4	4.4	5.6
		Data Recovery %	100	100	100	100	94	100	100	100	100	100	100	97	99
		Maximum	15.5	23.3	32.9	23.3	29.0	13.9	8.4	9.9	8.0	8.7	17.1	10.9	32.9

**Note:** (1) Monthly maxima and averages for individual stations are not reported if data recovery is <75%  
(2) Data recovery is based on the number of valid days (where hourly data capture is >75% on an individual day)

1-Hour Ozone			Policy Objective = 0.10 ppm													
Region	Station	1 Hour Average (ppm)	Jan	Feb	Mar	Apr	May	Jun	Jul	Aug	Sep	Oct	Nov	Dec	Annual	
EAST	Alphington	Average	0.016	0.020	0.012	0.009	0.010	0.009	0.013	0.014	0.015	0.015	0.018	0.012	0.013	
		Data Recovery %	92	94	95	94	95	94	95	94	95	82	95	95	95	92
		Maximum	0.057	0.084	0.050	0.044	0.027	0.026	0.028	0.028	0.030	0.030	0.040	0.078	0.045	0.084
	Box.Hill	Average	0.021	0.020	0.016	0.014	0.011	0.011	0.016			0.016	0.017	0.022	0.017	0.016
		Data Recovery %	94	95	95	94	95	95	94	58	95	94	95	95	95	92
		Maximum	0.065	0.080	0.050	0.051	0.030	0.030	0.030		0.031	0.050	0.082	0.054	0.082	
	Brighton	Average	0.020	0.020	0.017	0.012	0.010	0.008	0.015	0.017	0.017	0.018	0.019	0.021	0.016	0.016
Data Recovery %		95	95	79	95	77	95	94	95	94	95	89	91	91	91	
Maximum		0.077	0.077	0.051	0.063	0.027	0.027	0.030	0.031	0.030	0.030	0.050	0.071	0.053	0.077	
Dandenong	Average	0.018	0.016	0.014	0.011	0.007	0.007	0.014	0.016	0.017	0.017	0.017	0.022	0.017	0.015	
	Data Recovery %	94	96	92	85	94	95	94	94	95	95	95	93	93	94	
	Maximum	0.068	0.067	0.053	0.040	0.026	0.027	0.033	0.033	0.030	0.044	0.066	0.056	0.068		
Mooroolbark	Average	0.021	0.021	0.017	0.016	0.008	0.012	0.017	0.020	0.018	0.020	0.026	0.019	0.018	0.018	
	Data Recovery %	94	95	95	95	95	95	94	79	94	80	96	92	92		
	Maximum	0.085	0.085	0.053	0.060	0.028	0.031	0.031	0.031	0.035	0.043	0.087	0.065	0.087		
<b>Region Summary</b>	<b>Average</b>	<b>0.019</b>	<b>0.019</b>	<b>0.015</b>	<b>0.013</b>	<b>0.009</b>	<b>0.009</b>	<b>0.015</b>	<b>0.017</b>	<b>0.017</b>	<b>0.018</b>	<b>0.021</b>	<b>0.016</b>	<b>0.016</b>		
<b>Data Recovery %</b>	<b>94</b>	<b>95</b>	<b>91</b>	<b>92</b>	<b>91</b>	<b>95</b>	<b>94</b>	<b>82</b>	<b>95</b>	<b>92</b>	<b>91</b>	<b>94</b>	<b>92</b>	<b>92</b>		
<b>Maximum</b>	<b>0.085</b>	<b>0.085</b>	<b>0.053</b>	<b>0.063</b>	<b>0.030</b>	<b>0.031</b>	<b>0.033</b>	<b>0.033</b>	<b>0.033</b>	<b>0.035</b>	<b>0.050</b>	<b>0.087</b>	<b>0.065</b>	<b>0.087</b>		
WEST	AltonaNorth	Average	0.019	0.020	0.016			0.009	0.015	0.017	0.017	0.021		0.017	0.017	
		Data Recovery %	86	94	94	17	51	92	88	95	83	93	70	92	80	
		Maximum	0.081	0.089	0.052			0.026	0.032	0.030	0.032	0.045		0.052	0.089	
	Deer Park	Average	0.017	0.016	0.013	0.014	0.011	0.011	0.016	0.019	0.019	0.017	0.019	0.019	0.019	
		Data Recovery %	94	95	94	85	95	95	85	95	95	94	95	94	95	
		Maximum	0.075	0.082	0.049	0.048	0.032	0.030	0.029	0.031	0.031	0.038	0.062	0.078	0.082	
	Footscray	Average	0.017	0.017		0.012	0.010	0.009	0.015	0.017	0.017	0.018	0.020	0.016	0.015	
Data Recovery %		94	95	40	94	95	95	94	95	87	94	95	95	89		
Maximum		0.073	0.085		0.060	0.032	0.027	0.029	0.029	0.032	0.044	0.078	0.054	0.085		
Melton	Average	0.021	0.022	0.019	0.017	0.014	0.012	0.018	0.021	0.020	0.019	0.023	0.017	0.019		
	Data Recovery %	94	95	95	95	95	95	89	96	93	90	95	91	94		
	Maximum	0.092	0.092	0.059	0.061	0.033	0.031	0.032	0.034	0.030	0.043	0.068	0.049	0.092		
Pt.Cook	Average	0.020	0.021	0.018	0.014	0.014	0.009	0.017	0.017	0.017	0.016	0.028	0.021	0.018		
	Data Recovery %	94	96	95	93	92	95	91	92	95	84	94	94	93		
	Maximum	0.093	0.087	0.052	0.065	0.029	0.027	0.032	0.031	0.032	0.054	0.102	0.065	0.102		
<b>Region Summary</b>	<b>Average</b>	<b>0.019</b>	<b>0.019</b>	<b>0.016</b>	<b>0.014</b>	<b>0.012</b>	<b>0.010</b>	<b>0.016</b>	<b>0.018</b>	<b>0.018</b>	<b>0.018</b>	<b>0.023</b>	<b>0.018</b>	<b>0.017</b>		
<b>Data Recovery %</b>	<b>93</b>	<b>95</b>	<b>84</b>	<b>77</b>	<b>86</b>	<b>94</b>	<b>89</b>	<b>94</b>	<b>91</b>	<b>91</b>	<b>90</b>	<b>89</b>	<b>89</b>			
<b>Maximum</b>	<b>0.093</b>	<b>0.092</b>	<b>0.059</b>	<b>0.067</b>	<b>0.033</b>	<b>0.031</b>	<b>0.032</b>	<b>0.034</b>	<b>0.032</b>	<b>0.054</b>	<b>0.102</b>	<b>0.065</b>	<b>0.102</b>			
GEELONG	GeelongSouth	Average	0.020	0.019	0.017	0.016	0.014	0.011	0.018	0.018	0.019	0.019	0.021	0.016	0.017	
		Data Recovery %	94	94	95	93	95	95	94	95	95	94	94	95	94	
		Maximum	0.080	0.059	0.058	0.060	0.030	0.030	0.034	0.030	0.033	0.041	0.083	0.058	0.083	
	Point.Henry	Average	0.018	0.017	0.016	0.016	0.014	0.010	0.018	0.020	0.020	0.021	0.023	0.017	0.018	
Data Recovery %		94	95	96	96	96	96	95	95	86	95	95	96	95		
Maximum		0.087	0.062	0.048	0.057	0.028	0.028	0.030	0.031	0.031	0.054	0.086	0.062	0.087		
<b>Region Summary</b>	<b>Average</b>	<b>0.019</b>	<b>0.018</b>	<b>0.016</b>	<b>0.016</b>	<b>0.014</b>	<b>0.010</b>	<b>0.018</b>	<b>0.019</b>	<b>0.019</b>	<b>0.020</b>	<b>0.022</b>	<b>0.016</b>	<b>0.017</b>		
<b>Data Recovery %</b>	<b>94</b>	<b>95</b>	<b>95</b>	<b>94</b>	<b>95</b>	<b>95</b>	<b>95</b>	<b>95</b>	<b>90</b>	<b>95</b>	<b>95</b>	<b>95</b>	<b>95</b>			
<b>Maximum</b>	<b>0.087</b>	<b>0.062</b>	<b>0.058</b>	<b>0.060</b>	<b>0.030</b>	<b>0.030</b>	<b>0.034</b>	<b>0.031</b>	<b>0.033</b>	<b>0.054</b>	<b>0.086</b>	<b>0.062</b>	<b>0.087</b>			
LATROBE VALLEY	Moe	Average	0.012	0.010	0.010	0.008	0.007	0.006	0.010	0.011	0.013	0.016			0.010	
		Data Recovery %	96	95	95	96	96	96	95	95	95	78			78	
		Maximum	0.057	0.043	0.035	0.026	0.017	0.019	0.019	0.022	0.029	0.030			0.057	
	Traralgon	Average	0.016		0.013	0.014	0.012	0.008	0.015	0.017	0.014	0.013	0.018	0.014	0.014	
Data Recovery %		92	63	95	83	96	96	96	95	95	94	96	95	91		
Maximum		0.104		0.054	0.046	0.028	0.029	0.031	0.031	0.029	0.034	0.051	0.044	0.104		
<b>Region Summary</b>	<b>Average</b>	<b>0.014</b>	<b>0.012</b>	<b>0.011</b>	<b>0.009</b>	<b>0.007</b>	<b>0.012</b>	<b>0.014</b>	<b>0.014</b>	<b>0.014</b>	<b>0.015</b>	<b>0.018</b>	<b>0.014</b>	<b>0.013</b>		
<b>Data Recovery %</b>	<b>94</b>	<b>79</b>	<b>95</b>	<b>89</b>	<b>96</b>	<b>96</b>	<b>95</b>	<b>95</b>	<b>95</b>	<b>86</b>	<b>96</b>	<b>95</b>	<b>93</b>			
<b>Maximum</b>	<b>0.104</b>	<b>0.050</b>	<b>0.054</b>	<b>0.046</b>	<b>0.028</b>	<b>0.029</b>	<b>0.031</b>	<b>0.031</b>	<b>0.029</b>	<b>0.034</b>	<b>0.051</b>	<b>0.044</b>	<b>0.104</b>			

Note: Monthly maxima and averages for individual stations are not reported if data recovery is <75% (a maximum is recorded, however, if there has been an exceedance of a policy objective)





<b>4-Hour Ozone</b>		<b>Policy Objective = 0.08 ppm</b>													
<b>Region</b>	<b>Station</b>	<b>4 Hour Average (ppm)</b>	<b>Jan</b>	<b>Feb</b>	<b>Mar</b>	<b>Apr</b>	<b>May</b>	<b>Jun</b>	<b>Jul</b>	<b>Aug</b>	<b>Sep</b>	<b>Oct</b>	<b>Nov</b>	<b>Dec</b>	<b>Annual</b>
<b>EAST</b>	Alphington	Maximum	0.054	0.080	0.045	0.037	0.026	0.025	0.028	0.027	0.029	0.039	0.069	0.042	0.080
		No. of Exceedences	0	0	0	0	0	0	0	0	0	0	0	0	0
	Box.Hill	Maximum	0.064	0.072	0.048	0.048	0.029	0.029	0.030		0.029	0.045	0.079	0.051	0.079
		No. of Exceedences	0	0	0	0	0	0	0	0	0	0	0	0	0
	Brighton	Maximum	0.068	0.068	0.049	0.054	0.026	0.027	0.029	0.030	0.029	0.046	0.069	0.050	0.069
		No. of Exceedences	0	0	0	0	0	0	0	0	0	0	0	0	0
	Dandenong	Maximum	0.063	0.060	0.049	0.037	0.025	0.027	0.030	0.032	0.029	0.043	0.061	0.054	0.063
	No. of Exceedences	0	0	0	0	0	0	0	0	0	0	0	0	0	
	Mooroolbark	Maximum	0.075	0.075	0.051	0.058	0.025	0.031	0.031	0.031	0.034	0.042	0.076	0.062	0.076
		No. of Exceedences	0	0	0	0	0	0	0	0	0	0	0	0	0
	<b>Region Summary</b>	<b>Maximum</b>	<b>0.075</b>	<b>0.080</b>	<b>0.051</b>	<b>0.058</b>	<b>0.029</b>	<b>0.031</b>	<b>0.031</b>	<b>0.032</b>	<b>0.034</b>	<b>0.046</b>	<b>0.079</b>	<b>0.062</b>	<b>0.080</b>
<b>WEST</b>	AltonaNorth	Maximum	0.069	0.078	0.051			0.026	0.031	0.030	0.032	0.043	0.081	0.049	0.081
		No. of Exceedences	0	0	0	0	0	0	0	0	0	0	1	0	1
	Deer Park	Maximum	0.066	0.069	0.046	0.046	0.031	0.028	0.029	0.030	0.030	0.037	0.057	0.045	0.069
		No. of Exceedences	0	0	0	0	0	0	0	0	0	0	0	0	0
	Footscray	Maximum	0.066	0.073		0.051	0.030	0.026	0.027	0.029	0.032	0.043	0.072	0.050	0.073
		No. of Exceedences	0	0	0	0	0	0	0	0	0	0	0	0	0
	Melton	Maximum	0.071	0.078	0.051	0.057	0.032	0.030	0.032	0.033	0.029	0.039	0.063	0.046	0.078
	No. of Exceedences	0	0	0	0	0	0	0	0	0	0	0	0	0	
	Pt.Cook	Maximum	0.073	0.079	0.051	0.063	0.029	0.027	0.031	0.031	0.032	0.051	0.095	0.060	0.095
		No. of Exceedences	0	0	0	0	0	0	0	0	0	0	2	0	2
	<b>Region Summary</b>	<b>Maximum</b>	<b>0.073</b>	<b>0.079</b>	<b>0.051</b>	<b>0.063</b>	<b>0.032</b>	<b>0.030</b>	<b>0.032</b>	<b>0.033</b>	<b>0.032</b>	<b>0.051</b>	<b>0.095</b>	<b>0.060</b>	<b>0.095</b>
<b>GEELONG</b>	GeelongSouth	Maximum	0.073	0.056	0.049	0.052	0.030	0.029	0.030	0.029	0.032	0.039	0.079	0.050	0.079
		No. of Exceedences	0	0	0	0	0	0	0	0	0	0	0	0	0
	Point.Henry	Maximum	0.075	0.052	0.044	0.046	0.028	0.027	0.029	0.030	0.030	0.045	0.082	0.058	0.082
	No. of Exceedences	0	0	0	0	0	0	0	0	0	0	1	0	1	
	<b>Region Summary</b>	<b>Maximum</b>	<b>0.075</b>	<b>0.056</b>	<b>0.049</b>	<b>0.052</b>	<b>0.030</b>	<b>0.029</b>	<b>0.030</b>	<b>0.030</b>	<b>0.032</b>	<b>0.045</b>	<b>0.082</b>	<b>0.058</b>	<b>0.082</b>
<b>LATROBE VALLEY</b>	Moe	Maximum	0.047	0.040	0.034	0.025	0.016	0.018	0.018	0.020	0.028	0.028			0.047
		No. of Exceedences	0	0	0	0	0	0	0	0	0	0			0
	Traralgon	Maximum	0.074		0.047	0.043	0.027	0.028	0.030	0.030	0.028	0.033	0.047	0.039	0.074
	No. of Exceedences	0	0	0	0	0	0	0	0	0	0	0	0	0	
	<b>Region Summary</b>	<b>Maximum</b>	<b>0.074</b>	<b>0.045</b>	<b>0.047</b>	<b>0.043</b>	<b>0.027</b>	<b>0.028</b>	<b>0.030</b>	<b>0.030</b>	<b>0.028</b>	<b>0.033</b>	<b>0.047</b>	<b>0.039</b>	<b>0.074</b>

<b>8-Hour Carbon Monoxide</b>			<b>Policy Objective = 9.0 ppm</b>													
<b>Region</b>	<b>Station</b>	<b>8 Hour Average (ppm)</b>	<b>Jan</b>	<b>Feb</b>	<b>Mar</b>	<b>Apr</b>	<b>May</b>	<b>Jun</b>	<b>Jul</b>	<b>Aug</b>	<b>Sep</b>	<b>Oct</b>	<b>Nov</b>	<b>Dec</b>	<b>Annual</b>	
<b>CITY</b>	Richmond	Average	0.3	0.4	0.4	0.4	0.6	0.7	0.4	0.4	0.3	0.3	0.4	0.3	0.4	
		Data Recovery %	83	96	90	87	88	91	90	94	95	95	95	95	95	91
		Maximum	0.7	1.2	1.6	2.5	3.3	2.7	2.2	1.8	1.0	0.7	0.9	1.5	3.3	
	<b>Region Summary</b>	<b>Average</b>	<b>0.3</b>	<b>0.4</b>	<b>0.4</b>	<b>0.4</b>	<b>0.6</b>	<b>0.7</b>	<b>0.4</b>	<b>0.4</b>	<b>0.3</b>	<b>0.3</b>	<b>0.4</b>	<b>0.3</b>	<b>0.4</b>	
	<b>Data Recovery %</b>	<b>83</b>	<b>96</b>	<b>90</b>	<b>87</b>	<b>88</b>	<b>91</b>	<b>90</b>	<b>94</b>	<b>95</b>	<b>95</b>	<b>95</b>	<b>95</b>	<b>95</b>	<b>91</b>	
	<b>Maximum</b>	<b>0.7</b>	<b>1.2</b>	<b>1.6</b>	<b>2.5</b>	<b>3.3</b>	<b>2.7</b>	<b>2.2</b>	<b>1.8</b>	<b>1.0</b>	<b>0.7</b>	<b>0.9</b>	<b>1.5</b>	<b>3.3</b>		
<b>EAST</b>	Alphington	Average	0.2	0.3	0.2	0.2	0.5	0.5	0.2	0.1	0.1	0.0	0.1	0.0	0.2	
		Data Recovery %	94	94	95	94	95	94	95	94	94	95	91	86	94	93
		Maximum	0.8	1.1	1.3	2.1	2.6	2.3	2.0	1.9	1.1	0.5	0.3	0.3	2.6	
	Box.Hill	Average	0.1	0.2	0.2	0.3	0.5	0.5	0.3	0.2	0.2	0.2	0.2	0.2	0.2	0.3
		Data Recovery %	94	95	95	94	95	95	94	94	93	93	95	95	95	94
		Maximum	0.5	1.1	1.0	1.8	2.4	2.4	1.9	1.7	0.9	0.6	0.6	0.4	2.4	
	Mooroolbark	Average	0.0	0.2	0.1	0.2	0.4	0.4	0.4	0.3	0.3	0.2	0.2	0.2	0.2	0.2
		Data Recovery %	94	89	94	94	92	94	95	94	94	94	80	94	92	
Maximum		0.2	1.3	0.5	1.2	2.3	2.5	1.2	1.4	1.0	0.7	0.5	0.4	2.5		
<b>Region Summary</b>	<b>Average</b>	<b>0.2</b>	<b>0.3</b>	<b>0.2</b>	<b>0.3</b>	<b>0.7</b>	<b>0.7</b>	<b>0.4</b>	<b>0.3</b>	<b>0.3</b>	<b>0.2</b>	<b>0.2</b>	<b>0.2</b>	<b>0.2</b>		
	<b>Data Recovery %</b>	<b>94</b>	<b>93</b>	<b>94</b>	<b>94</b>	<b>94</b>	<b>94</b>	<b>95</b>	<b>94</b>	<b>94</b>	<b>93</b>	<b>87</b>	<b>95</b>	<b>93</b>		
	<b>Maximum</b>	<b>0.8</b>	<b>1.3</b>	<b>1.3</b>	<b>2.1</b>	<b>2.6</b>	<b>2.5</b>	<b>2.0</b>	<b>1.9</b>	<b>1.1</b>	<b>0.7</b>	<b>0.6</b>	<b>0.4</b>	<b>2.6</b>		
<b>WEST</b>	Footscray	Average	0.1	0.3	0.2	0.3	0.5	0.5	0.3	0.3	0.1	0.2	0.2	0.2	0.3	
		Data Recovery %	92	76	95	92	92	95	89	88	93	94	95	95	91	
		Maximum	0.6	0.9	0.8	0.9	2.1	1.8	1.4	1.2	0.8	0.6	0.6	0.5	2.1	
	<b>Region Summary</b>	<b>Average</b>	<b>0.1</b>	<b>0.3</b>	<b>0.2</b>	<b>0.3</b>	<b>0.5</b>	<b>0.5</b>	<b>0.3</b>	<b>0.3</b>	<b>0.1</b>	<b>0.2</b>	<b>0.2</b>	<b>0.2</b>	<b>0.3</b>	
	<b>Data Recovery %</b>	<b>92</b>	<b>76</b>	<b>95</b>	<b>92</b>	<b>92</b>	<b>95</b>	<b>89</b>	<b>88</b>	<b>93</b>	<b>94</b>	<b>95</b>	<b>95</b>	<b>91</b>		
	<b>Maximum</b>	<b>0.6</b>	<b>0.9</b>	<b>0.8</b>	<b>0.9</b>	<b>2.1</b>	<b>1.8</b>	<b>1.4</b>	<b>1.2</b>	<b>0.8</b>	<b>0.6</b>	<b>0.6</b>	<b>0.5</b>	<b>2.1</b>		
<b>GEELONG</b>	GeelongSouth	Average	0.1	0.1	0.2	0.2	0.3	0.4	0.2	0.2	0.2	0.2	0.2	0.2	0.2	
		Data Recovery %	94	94	95	93	92	91	92	95	95	94	95	95	94	
		Maximum	0.6	0.5	0.8	0.8	1.6	2.6	1.9	0.8	0.7	0.7	0.6	0.4	2.6	
	<b>Region Summary</b>	<b>Average</b>	<b>0.1</b>	<b>0.1</b>	<b>0.2</b>	<b>0.2</b>	<b>0.3</b>	<b>0.4</b>	<b>0.2</b>	<b>0.2</b>	<b>0.2</b>	<b>0.2</b>	<b>0.2</b>	<b>0.2</b>	<b>0.2</b>	
	<b>Data Recovery %</b>	<b>94</b>	<b>94</b>	<b>95</b>	<b>93</b>	<b>92</b>	<b>91</b>	<b>92</b>	<b>95</b>	<b>95</b>	<b>94</b>	<b>95</b>	<b>95</b>	<b>94</b>		
	<b>Maximum</b>	<b>0.6</b>	<b>0.5</b>	<b>0.8</b>	<b>0.8</b>	<b>1.6</b>	<b>2.6</b>	<b>1.9</b>	<b>0.8</b>	<b>0.7</b>	<b>0.7</b>	<b>0.6</b>	<b>0.4</b>	<b>2.6</b>		

**Note:** Monthly maxima and averages for individual stations are not reported if data recovery is <75% (a maximum is recorded, however, if there has been an exceedence of a policy objective)

1-Hour Nitrogen Dioxide			Policy Objective = 0.12 ppm												
Region	Station	1 Hour Average (ppm)	Jan	Feb	Mar	Apr	May	Jun	Jul	Aug	Sep	Oct	Nov	Dec	Annual
CITY	Richmond	Average	0.008	0.009	0.013	0.014	0.017	0.017	0.014	0.012	0.011	0.011	0.012	0.008	0.012
		Data Recovery %	84	96	92	94	92	95	94	95	95	95	95	95	93
		Maximum	0.045	0.050	0.039	0.054	0.046	0.053	0.043	0.034	0.037	0.032	0.059	0.038	0.059
	Region Summary	Average	0.008	0.009	0.013	0.014	0.017	0.017	0.014	0.012	0.011	0.011	0.012	0.008	0.012
EAST	Alphington	Average	0.008	0.009	0.012	0.011	0.014	0.013	0.011	0.008	0.009	0.008	0.009	0.006	0.010
		Data Recovery %	94	93	95	91	92	94	94	94	95	93	95	95	94
		Maximum	0.051	0.038	0.048	0.052	0.043	0.043	0.034	0.032	0.032	0.026	0.045	0.038	0.052
	Box Hill	Average	0.005	0.006	0.008	0.009	0.012	0.011	0.011	0.009	0.008	0.007	0.008	0.006	0.008
		Data Recovery %	94	95	95	94	95	83	94	94	95	94	95	95	94
		Maximum	0.031	0.027	0.040	0.046	0.036	0.028	0.035	0.031	0.031	0.024	0.036	0.025	0.046
	Brighton	Average	0.006	0.006	0.009	0.011	0.014	0.015	0.012	0.011	0.009	0.007		0.005	0.009
		Data Recovery %	95	95	93	95	96	95	94	95	95	94	70	90	92
		Maximum	0.038	0.040	0.038	0.049	0.044	0.042	0.038	0.036	0.033	0.030		0.035	0.049
	Dandenong	Average	0.006	0.007	0.009	0.012	0.013	0.012	0.014	0.012	0.012	0.010	0.011	0.008	0.010
		Data Recovery %	94	96	92	85	94	95	93	94	95	95	95	93	93
		Maximum	0.036	0.036	0.032	0.051	0.042	0.032	0.045	0.033	0.043	0.030	0.047	0.030	0.051
Mooroolbark	Average	0.004	0.004	0.006	0.007	0.009	0.008	0.009	0.005	0.004	0.004	0.007	0.006	0.006	
	Data Recovery %	94	95	94	95	95	94	84	94	94	80	96	92		
	Maximum	0.024	0.035	0.028	0.028	0.037	0.029	0.028	0.027	0.021	0.021	0.031	0.022	0.037	
Region Summary	Average	0.006	0.006	0.009	0.010	0.012	0.012	0.011	0.009	0.008	0.007	0.009	0.006	0.009	
WEST	AltonaNorth	Average	0.007	0.006	0.009	0.012	0.014	0.016	0.013	0.010	0.010	0.007	0.009	0.006	0.010
		Data Recovery %	89	94	94	90	94	92	94	95	91	93	89	94	92
		Maximum	0.046	0.046	0.037	0.050	0.062	0.038	0.046	0.033	0.036	0.038	0.068	0.036	0.068
	Deer Park	Average	0.006	0.007	0.009	0.010	0.013	0.011	0.008	0.004	0.004	0.006	0.009	0.006	0.008
		Data Recovery %	91	90	90	85	95	95	89	95	95	94	95	94	92
		Maximum	0.040	0.031	0.040	0.053	0.059	0.035	0.037	0.033	0.034	0.035	0.045	0.035	0.059
	Footscray	Average	0.008	0.010	0.013	0.015	0.019	0.017	0.013	0.010	0.011	0.010	0.012	0.008	0.012
		Data Recovery %	94	94	94	94	93	95	95	95	94	94	95	95	94
		Maximum	0.048	0.046	0.042	0.055	0.063	0.041	0.044	0.035	0.036	0.037	0.064	0.039	0.064
	Pt.Cook	Average	0.005	0.004	0.007	0.007	0.008	0.011	0.007	0.005	0.005	0.004	0.006	0.003	0.006
		Data Recovery %	94	96	95	95	93	95	95	95	95	84	94	94	94
		Maximum	0.055	0.027	0.033	0.039	0.047	0.034	0.031	0.025	0.033	0.028	0.044	0.036	0.055
Region Summary	Average	0.006	0.007	0.009	0.011	0.013	0.014	0.010	0.007	0.008	0.007	0.009	0.006	0.009	
GeelongSouth	Average	0.004	0.004	0.006	0.008	0.009	0.011	0.008	0.006	0.007	0.005	0.006	0.004	0.006	
	Data Recovery %	82	94	95	93	95	95	93	95	95	94	95	94	93	
	Maximum	0.048	0.029	0.027	0.037	0.037	0.036	0.044	0.028	0.028	0.027	0.036	0.024	0.048	
Region Summary	Average	0.004	0.004	0.006	0.008	0.009	0.011	0.008	0.006	0.007	0.005	0.006	0.004	0.006	
LATROBE VALLEY	Moe	Average	0.004	0.004	0.005	0.007	0.008	0.007	0.006	0.006	0.005	0.005			0.006
		Data Recovery %	96	95	95	96	96	96	96	96	95	96			78
		Maximum	0.024	0.062	0.021	0.025	0.025	0.022	0.025	0.026	0.023	0.019			0.062
	Traralgon	Average	0.006	0.004	0.006	0.008	0.009	0.010	0.009	0.008	0.007	0.005	0.005	0.004	0.007
		Data Recovery %	96	94	95	93	96	96	96	95	95	95	96	96	95
		Maximum	0.033	0.067	0.030	0.031	0.033	0.029	0.028	0.028	0.025	0.019	0.022	0.022	0.067
Region Summary	Average	0.005	0.004	0.005	0.008	0.009	0.009	0.008	0.007	0.006	0.005	0.005	0.004	0.006	
Maximum	0.033	0.067	0.030	0.031	0.033	0.029	0.028	0.028	0.025	0.019	0.022	0.022	0.067		

Note: Monthly maxima and averages for individual stations are not reported if data recovery is <75% (a maximum is recorded, however, if there has been an exceedence of a policy objective)



1-Hour Sulfur Dioxide			Policy Objective = 0.20 ppm												
Region	Station	1 Hour Average(ppm)	Jan	Feb	Mar	Apr	May	Jun	Jul	Aug	Sep	Oct	Nov	Dec	Annual
EAST	Alphington	Average	0.001	0.001	0.001	-0.001	-0.001	-0.001	-0.001	-0.002	-0.001	-0.001	-0.001	-0.001	-0.001
		Data Recovery %	94	93	91	89	92	94	94	94	95	93	95	76	92
		Maximum	0.010	0.012	0.008	0.006	0.005	0.007	0.004	0.002	0.007	0.008	0.010	0.007	0.012
	Box.Hill	Average	0.000	-0.002	-0.001	-0.002	-0.001	-0.001	-0.001	-0.002	-0.002	0.000	0.000	0.001	-0.001
		Data Recovery %	90	91	91	93	90	95	94	94	95	94	95	95	93
		Maximum	0.005	0.004	0.003	0.006	0.003	0.003	0.003	0.001	0.003	0.005	0.007	0.013	0.013
<b>Region Summary</b>	<b>Average</b>	<b>0.001</b>	<b>0.000</b>	<b>0.000</b>	<b>-0.001</b>	<b>-0.001</b>	<b>-0.001</b>	<b>-0.001</b>	<b>-0.001</b>	<b>-0.002</b>	<b>-0.001</b>	<b>0.000</b>	<b>0.000</b>	<b>0.000</b>	<b>-0.001</b>
<b>Data Recovery %</b>	<b>92</b>	<b>91</b>	<b>91</b>	<b>90</b>	<b>91</b>	<b>90</b>	<b>90</b>	<b>90</b>	<b>90</b>	<b>90</b>	<b>89</b>	<b>86</b>	<b>89</b>	<b>90</b>	
<b>Maximum</b>	<b>0.010</b>	<b>0.012</b>	<b>0.008</b>	<b>0.006</b>	<b>0.005</b>	<b>0.007</b>	<b>0.004</b>	<b>0.002</b>	<b>0.007</b>	<b>0.008</b>	<b>0.010</b>	<b>0.013</b>	<b>0.013</b>	<b>0.013</b>	
WEST	AltonaNorth	Average	0.002	0.002	0.003	0.003	0.002	0.002	0.002	0.001	0.003	0.003	0.002	0.002	0.002
		Data Recovery %	87	90	89	92	94	92	94	95	90	93	87	90	91
		Maximum	0.052	0.031	0.040	0.036	0.033	0.020	0.030	0.023	0.061	0.068	0.049	0.047	0.068
	Footscray	Average	0.002	0.002	0.002	0.002	0.002	0.002	0.001	0.000	0.001	0.001	0.002	0.001	0.001
		Data Recovery %	94	94	95	94	95	95	95	94	94	94	95	95	95
		Maximum	0.024	0.024	0.024	0.030	0.025	0.049	0.028	0.013	0.013	0.019	0.026	0.021	0.049
<b>Region Summary</b>	<b>Average</b>	<b>0.002</b>	<b>0.002</b>	<b>0.002</b>	<b>0.002</b>	<b>0.002</b>	<b>0.002</b>	<b>0.001</b>	<b>0.001</b>	<b>0.002</b>	<b>0.002</b>	<b>0.002</b>	<b>0.001</b>	<b>0.002</b>	
<b>Data Recovery %</b>	<b>91</b>	<b>92</b>	<b>92</b>	<b>93</b>	<b>94</b>	<b>93</b>	<b>94</b>	<b>94</b>	<b>92</b>	<b>94</b>	<b>91</b>	<b>92</b>	<b>93</b>		
<b>Maximum</b>	<b>0.052</b>	<b>0.031</b>	<b>0.040</b>	<b>0.036</b>	<b>0.033</b>	<b>0.049</b>	<b>0.030</b>	<b>0.023</b>	<b>0.061</b>	<b>0.068</b>	<b>0.049</b>	<b>0.047</b>	<b>0.068</b>		
GeelongSouth	Average	0.001	0.001	0.001	0.001	0.000	0.001	0.001	0.001	0.000	0.001	0.001	0.001	0.001	0.001
	Data Recovery %	90	92	95	93	95	95	94	95	95	94	95	92	94	
	Maximum	0.037	0.016	0.023	0.025	0.014	0.016	0.026	0.010	0.024	0.026	0.024	0.028	0.037	
<b>Region Summary</b>	<b>Average</b>	<b>0.001</b>	<b>0.001</b>	<b>0.002</b>	<b>0.001</b>	<b>0.001</b>	<b>0.001</b>	<b>0.001</b>	<b>0.001</b>	<b>0.001</b>	<b>0.001</b>	<b>0.001</b>	<b>0.001</b>	<b>0.001</b>	
<b>Data Recovery %</b>	<b>90</b>	<b>92</b>	<b>95</b>	<b>93</b>	<b>95</b>	<b>95</b>	<b>94</b>	<b>95</b>	<b>95</b>	<b>94</b>	<b>95</b>	<b>92</b>	<b>94</b>		
<b>Maximum</b>	<b>0.037</b>	<b>0.016</b>	<b>0.023</b>	<b>0.025</b>	<b>0.014</b>	<b>0.016</b>	<b>0.026</b>	<b>0.010</b>	<b>0.024</b>	<b>0.026</b>	<b>0.024</b>	<b>0.028</b>	<b>0.037</b>		
LATROBE VALLEY	Moe	Average	0.002	0.002	0.002	0.001	0.002	0.002	0.002	0.002	0.002	0.002			0.002
		Data Recovery %	96	95	95	96	96	96	95	96	95	78			78
		Maximum	0.054	0.024	0.020	0.012	0.026	0.005	0.018	0.008	0.016	0.053			0.054
	Traralgon	Average	0.003	0.001	0.002	0.002	0.002	0.002	0.003	0.002	0.002	0.002	0.003	0.003	0.002
		Data Recovery %	96	92	95	95	96	96	96	95	95	95	96	96	95
		Maximum	0.110	0.017	0.025	0.011	0.038	0.015	0.016	0.011	0.019	0.048	0.041	0.028	0.110
<b>Region Summary</b>	<b>Average</b>	<b>0.003</b>	<b>0.002</b>	<b>0.002</b>	<b>0.001</b>	<b>0.002</b>	<b>0.002</b>	<b>0.002</b>	<b>0.002</b>	<b>0.002</b>	<b>0.002</b>	<b>0.003</b>	<b>0.003</b>	<b>0.002</b>	
<b>Data Recovery %</b>	<b>96</b>	<b>94</b>	<b>95</b>	<b>95</b>	<b>96</b>	<b>96</b>	<b>95</b>	<b>95</b>	<b>95</b>	<b>87</b>	<b>96</b>	<b>96</b>	<b>95</b>		
<b>Maximum</b>	<b>0.110</b>	<b>0.024</b>	<b>0.025</b>	<b>0.012</b>	<b>0.038</b>	<b>0.015</b>	<b>0.018</b>	<b>0.011</b>	<b>0.019</b>	<b>0.053</b>	<b>0.041</b>	<b>0.028</b>	<b>0.110</b>		

**Note:** Monthly maxima and averages for individual stations are not reported if data recovery is <75% (a maximum is recorded, however, if there has been an exceedence of a policy objective)

24-Hour Sulfur Dioxide			Policy Objective = 0.08 ppm												
Region	Station	24 Hour Average (ppm)	Jan	Feb	Mar	Apr	May	Jun	Jul	Aug	Sep	Oct	Nov	Dec	Annual
EAST	Alphington	Maximum	0.002	0.003	0.002	0.000	0.001	0.002	0.001	0.000	0.002	0.000	0.002	0.000	0.003
		Box.Hill	Maximum	0.002	0.000	-0.001	0.000	0.000	0.000	0.000	-0.001	0.000	0.003	0.003	0.004
	<b>Region Summary</b>	<b>Maximum</b>	<b>0.002</b>	<b>0.003</b>	<b>0.002</b>	<b>0.000</b>	<b>0.001</b>	<b>0.002</b>	<b>0.001</b>	<b>0.000</b>	<b>0.000</b>	<b>0.002</b>	<b>0.003</b>	<b>0.003</b>	<b>0.004</b>
WEST	Footscray	Maximum	0.005	0.005	0.006	0.005	0.005	0.005	0.003	0.004	0.003	0.004	0.006	0.004	0.006
		AltonaNorth	Maximum	0.011	0.005	0.009	0.007	0.008	0.007	0.011	0.003	0.034	0.010	0.014	0.006
	<b>Region Summary</b>	<b>Maximum</b>	<b>0.011</b>	<b>0.005</b>	<b>0.009</b>	<b>0.007</b>	<b>0.008</b>	<b>0.007</b>	<b>0.011</b>	<b>0.004</b>	<b>0.034</b>	<b>0.010</b>	<b>0.014</b>	<b>0.006</b>	<b>0.034</b>
GEELONG	GeelongSouth	Maximum	0.005	0.005	0.005	0.003	0.002	0.006	0.004	0.003	0.003	0.003	0.003	0.003	0.006
		<b>Region Summary</b>	<b>Maximum</b>	<b>0.005</b>	<b>0.005</b>	<b>0.005</b>	<b>0.003</b>	<b>0.002</b>	<b>0.006</b>	<b>0.004</b>	<b>0.003</b>	<b>0.003</b>	<b>0.003</b>	<b>0.003</b>	<b>0.003</b>
	LATROBE VALLEY	Moe	Maximum	0.009	0.006	0.005	0.004	0.005	0.003	0.004	0.002	0.003	0.003	0.011	
Traralgon			Maximum	0.013	0.004	0.006	0.004	0.008	0.004	0.005	0.005	0.010	0.008	0.006	0.008
<b>Region Summary</b>		<b>Maximum</b>	<b>0.013</b>	<b>0.006</b>	<b>0.006</b>	<b>0.004</b>	<b>0.008</b>	<b>0.004</b>	<b>0.005</b>	<b>0.005</b>	<b>0.010</b>	<b>0.011</b>	<b>0.006</b>	<b>0.008</b>	<b>0.013</b>

