



VICTORIA'S AIR QUALITY 2011 AIR MONITORING DATA

- Section 1 - Report Card** an assessment of compliance with the air quality goals and objectives
- Section 2 - Trend analysis** an update of the overall trends in air quality in Melbourne
- Section 3 - Monthly Data Tables** tabulated monthly air quality statistics

Section 1- Report Card

Compliance with Air Quality Objectives Assessment of Victoria's air quality on a station-by-station basis

Compliance with Air Quality Objectives Assessment of Victoria's air quality on a station-by-station basis

The numbers in the table indicate the number of days the objectives were not met.

Region	Station	Particles			Ozone		NO ₂		CO	SO ₂		
		Visibility	PM ₁₀	PM _{2.5}	1 hr	4 hr	1 hr	24 hr	8hr	1 hr	24 hr	1 year
M E L B O U R N E	City	Richmond	11	0			0	0	0*			
	East	Alphington	11	1	0	0	0	0	0	0	0	0
		Box Hill	7	1		0	0	0	0	0	0	0
		Brighton	8	0*		0	0	0	0			
		Dandenong	7*	0		0	0	0	0			
		Mooroolbark	18	1		0	0	0	0	0		
	West	Altona North				0	0	0	0	0	0	0
		Brooklyn	12*	13	0*							
		Deer Park	5	0		0	0	0	0			
		Footscray	5	0	0	0	0	0	0	0	0	0
		Melton				0	0					
		Point Cook	7			0	0	0	0			
		Sunshine West		1*								
	GEELONG	Geelong South	7	2		0	0	0	0	0	0	0
	Point Henry				0*	0*						
LATROBE VALLEY	Traralgon	13	0		0	0	0	0	0	0	0	

	Objective and Goal met		Exceeded the Objective, but met the Goal		Goal not Met	*	Insufficient data to demonstrate compliance
--	------------------------	--	--	--	--------------	---	---

* Monitoring for this pollutant did not meet the 75% data capture target (ie. data capture in each quarter of the year)

On an annual basis, EPA assesses the air quality monitored at each station against the state and national air quality objectives and goals.

The numbers presented in the Table show the number of days that an air quality objective was not met.

Shading is used to indicate the assessment against the goals, with:

- *Green shading* indicating that the 2011 goal was met;
- *Red shading*, that the 2011 goal was not met; and
- *Yellow shading*, that whilst the 2011 goal was met, there were still days when the objective was not met

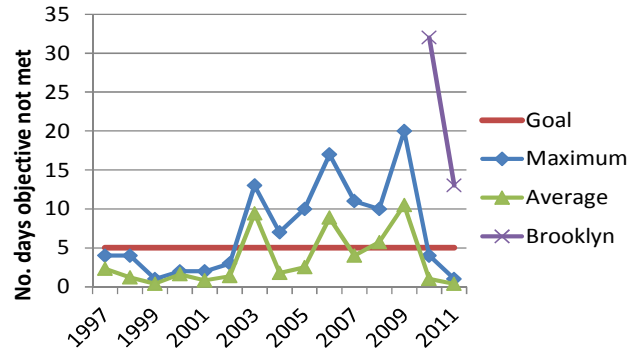
Monitoring instruments not meeting the data capture target are indicated by an asterisk and cells are not shaded yellow or green.

A blank cell indicates that monitoring for a particular pollutant was not performed at this station.

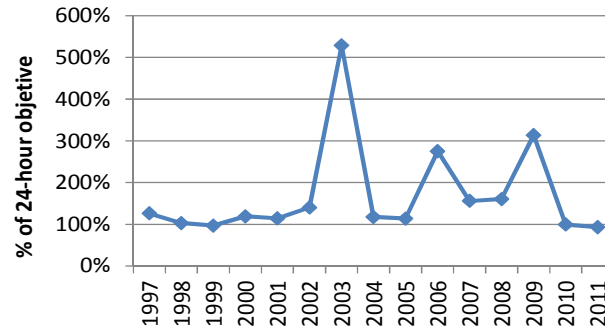
Note, for PM2.5 there is no 2011 goal and monitoring occurs on a one-day-in-three basis.

Section 2 - Trend analysis

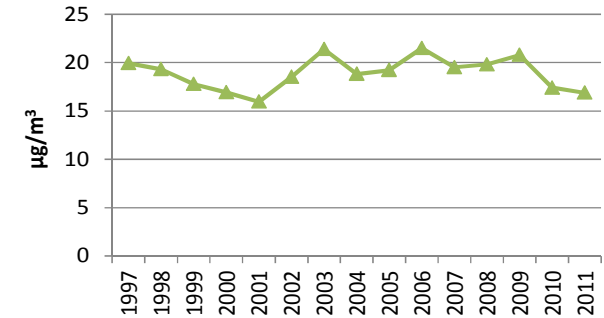
1. Particles smaller than 10 µm (PM₁₀)



(a) Days not meeting the PM₁₀ objective[#]

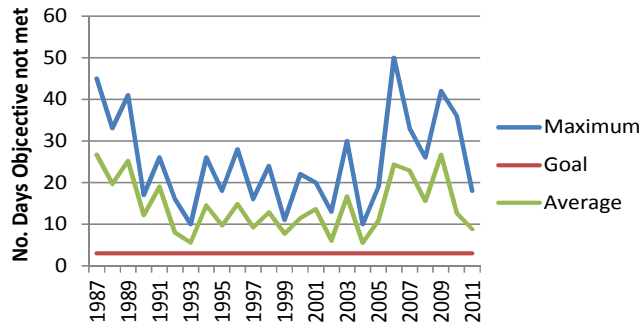


(b) Maximum 24-hour PM₁₀

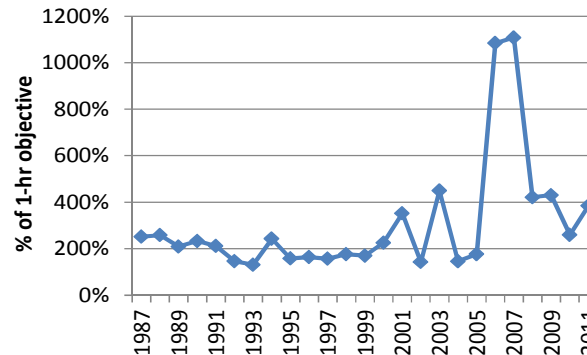


(c) Annual average PM₁₀

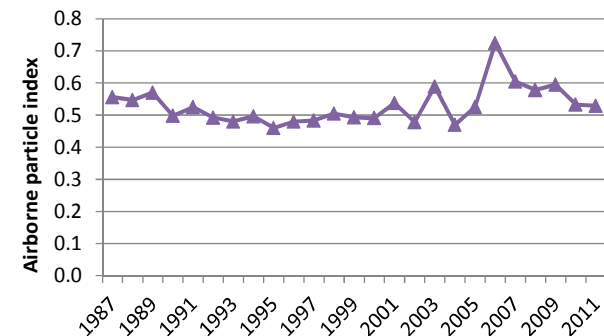
2. Visibility measured as API



(a) Days not meeting the visibility objective



(b) Maximum 1-hour API



(c) Annual average API

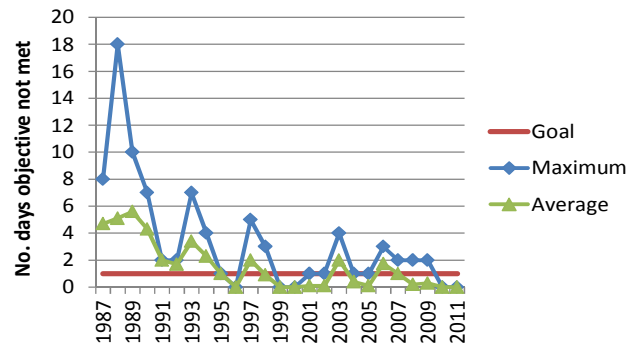
A range of trend parameters for Melbourne are presented:

- Days not meeting the objective – Two values for this parameter are presented. The maximum number gives the value for the station recording the highest number of days not meeting the air quality objective each year (that is, the worst performing station that year). The average number (calculated by averaging the number of days at each station in Melbourne) is a better indicator for how Melbourne is performing overall rather than simply looking at an individual station.
- Maximum pollutant levels – This looks at the highest pollutant levels recorded over the year. The value is calculated by averaging the maximum pollutant levels recorded at each monitoring station in Melbourne over any one year.
- Average pollutant levels – In addition to the peak levels, we are also interested in the average pollutant level across Melbourne for the year. This is calculated by averaging levels from each station.

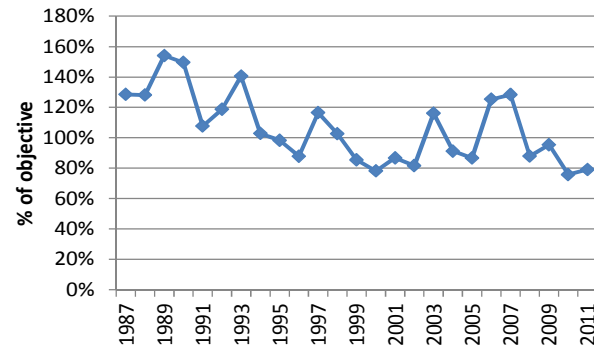
Brooklyn is not a long term trend station. It has been included to illustrate the local impact relative to the long term trend.

Trends of air quality in Melbourne (continued)

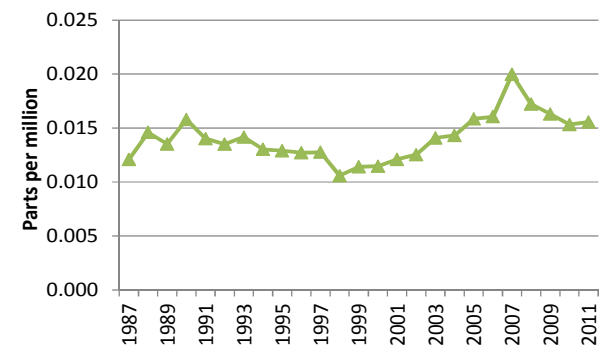
3. Ozone



(a) Days not meeting the four-hour ozone objective

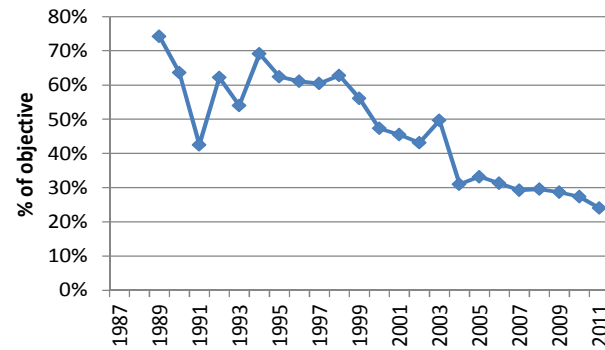


(b) Maximum four-hour ozone

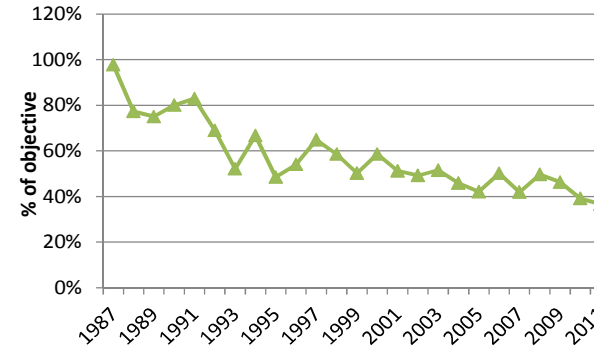


(c) Annual average ozone

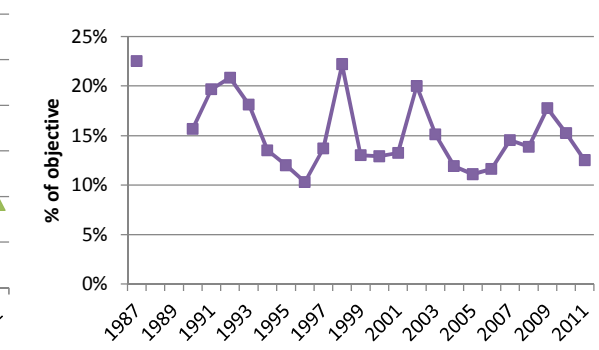
4. Other gases



(a) Maximum eight-hour CO



(b) Maximum one-hour NO₂



(c) Maximum one-hour SO₂

Section 3- Monthly Data Tables

1-Hour Visibility (as API)			Policy Objective = 2.35													
Region	Station	1 Hour Average	Jan	Feb	Mar	Apr	May	Jun	Jul	Aug	Sep	Oct	Nov	Dec	Annual	
CITY	Richmond	Average	0.59	0.54	0.60	0.68	0.67	0.63	0.52	0.55	0.51	0.46	0.47	0.57		
		Data Recovery %	91	92	93	92	83	95	95	71	84	88	95	92	89	
		No. of Exceedences	0	0	2	2	1	5	0	0	0	0	0	1	11	
	Maximum	1.72	1.63	3.56	2.80	2.99	3.21	2.29	1.88	2.20	1.14	2.56	3.56			
	Region Summary	Average	0.59	0.54	0.60	0.68	0.67	0.63	0.52	0.64	0.55	0.51	0.46	0.47	0.57	
		Data Recovery %	91	92	93	92	83	95	95	71	84	88	95	92	89	
		Maximum	1.72	1.63	3.56	2.80	2.99	3.21	2.29	2.15	1.88	2.20	1.14	2.56	3.56	
EAST	Alphington	Average	0.55	0.50	0.55	0.61	0.64	0.63	0.54	0.60	0.50	0.48	0.43	0.47	0.54	
		Data Recovery %	94	90	95	88	90	95	95	95	95	95	93	86	93	
		No. of Exceedences	0	0	2	1	3	3	1	0	0	0	0	1	11	
	Maximum	1.59	1.52	4.93	2.43	2.79	3.45	2.64	2.10	1.63	2.03	1.07	2.48	4.93		
	Box Hill	Average	0.51	0.49	0.54	0.58	0.61	0.55	0.47	0.54	0.49	0.48	0.45	0.45	0.51	
		Data Recovery %	95	95	95	95	95	95	95	95	95	95	95	95	95	
		No. of Exceedences	0	0	1	0	3	2	0	0	0	0	0	1	7	
	Maximum	1.50	1.28	2.59	1.84	2.75	2.87	2.13	2.15	1.57	2.29	1.05	2.49	2.87		
	Brighton	Average	0.53	0.47	0.55	0.60	0.56	0.52	0.45	0.50	0.45	0.46	0.42	0.44	0.50	
		Data Recovery %	94	95	95	95	95	95	95	95	94	95	90	93	94	
		No. of Exceedences	0	0	2	0	1	3	0	0	0	0	0	2	8	
	Maximum	1.49	1.10	4.74	2.21	2.49	2.60	2.15	2.12	1.74	2.07	1.15	3.39	4.74		
	Dandenong	Average	0.54	0.53	0.60	0.60	0.56	0.59	0.51	0.56	0.50	0.53	0.49	0.49	0.53	
		Data Recovery %	94	95	95	12	84	94	95	94	94	95	95	95	87	
No. of Exceedences		0	0	2	0	1	1	0	1	0	1	0	1	7		
Maximum	1.36	1.72	2.55		2.48	2.50	1.99	6.97	1.63	2.47	1.35	2.88	6.97			
Mooroolbark	Average	0.57	0.53	0.60	0.70	0.80	0.75	0.60	0.67	0.60	0.54	0.50	0.49	0.61		
	Data Recovery %	95	93	95	95	95	95	95	95	95	95	94	95	95		
	No. of Exceedences	0	0	1	2	4	3	3	4	0	1	0	0	18		
Maximum	1.59	1.68	2.52	4.16	3.99	3.35	3.56	3.58	2.05	2.37	1.38	1.93	4.16			
	Region Summary	Average	0.54	0.50	0.57	0.62	0.64	0.61	0.51	0.57	0.51	0.50	0.46	0.47	0.54	
		Data Recovery %	94	94	95	77	92	95	95	95	95	93	93	93		
		Maximum	1.59	1.72	4.93	4.16	3.99	3.45	3.56	6.97	2.05	2.47	1.38	3.39	6.97	
WEST	Brooklyn	Average	0.56	0.64	0.73	0.62	0.63	0.52	0.66	0.57	0.59	0.55	0.53	0.60		
		Data Recovery %	32	76	88	95	96	95	95	95	96	94	91	95	87	
		No. of Exceedences	0	0	1	3	1	2	1	0	1	2	1	0	12	
	Maximum	2.98	1.49	3.50	3.25	2.45	2.84	3.27	2.10	3.27	2.80	2.72	2.02	3.50		
	Deer Park	Average	0.51	0.48	0.57	0.55	0.47	0.44	0.39	0.50	0.40	0.45	0.45	0.45	0.47	
		Data Recovery %	95	94	95	95	95	95	94	95	95	94	95	95	95	
		No. of Exceedences	0	0	2	1	0	0	0	0	0	1	1	0	5	
	Maximum	2.04	1.26	47.70	2.84	2.05	2.18	1.86	1.88	1.12	2.51	3.44	1.75	47.70		
	Footscray	Average	0.56	0.51	0.56	0.63	0.55	0.56	0.46	0.56	0.49	0.52	0.49	0.47	0.53	
		Data Recovery %	95	95	95	95	95	95	95	95	95	95	95	95	95	
No. of Exceedences		0	0	1	2	0	1	0	0	0	0	1	0	5		
Maximum	1.50	1.41	3.18	2.73	1.93	2.54	2.03	1.74	1.78	2.20	2.64	1.56	3.18			
Point Cook	Average	0.49	0.45	0.52	0.56	0.47	0.46	0.40	0.52	0.46	0.50	0.49	0.51	0.49		
	Data Recovery %	94	95	83	93	95	94	94	95	95	95	95	89	93		
	No. of Exceedences	0	0	1	1	0	2	0	0	0	0	2	1	7		
Maximum	1.71	1.26	3.24	2.52	1.91	2.59	1.75	1.74	1.89	2.20	3.02	2.41	3.24			
	Region Summary	Average	0.52	0.50	0.57	0.62	0.53	0.52	0.44	0.56	0.48	0.52	0.49	0.49	0.52	
		Data Recovery %	79	90	90	95	95	95	95	95	95	94	94	93		
		Maximum	2.98	1.49	47.70	3.25	2.45	2.84	3.27	2.10	3.27	2.80	3.44	2.41	47.70	
GEE LONG	Geelong South	Average	0.49	0.46	0.52	0.54	0.52	0.49	0.43	0.54	0.46	0.48	0.47	0.46	0.49	
		Data Recovery %	96	95	95	94	95	95	95	95	95	94	95	95	95	
		No. of Exceedences	0	0	2	0	1	2	0	0	0	1	1	0	7	
	Maximum	1.50	1.09	5.95	1.96	2.74	2.85	1.99	2.20	1.74	2.92	2.78	1.36	5.95		
	Region Summary	Average	0.49	0.46	0.52	0.54	0.52	0.49	0.43	0.54	0.46	0.48	0.47	0.46	0.49	
		Data Recovery %	96	95	95	94	95	95	95	95	95	94	95	95		
		Maximum	1.50	1.09	5.95	1.96	2.74	2.85	1.99	2.20	1.74	2.92	2.78	1.36	5.95	
LATROBE VALLEY	Traralgon	Average	0.51	0.58	0.56	0.57	0.66	0.66	0.62	0.63	0.52	0.45	0.46	0.44	0.55	
		Data Recovery %	95	95	96	96	96	96	95	96	96	95	96	96	96	
		No. of Exceedences	0	1	1	2	2	3	3	1	0	0	0	0	13	
	Maximum	1.23	11.57	2.55	3.50	2.54	3.55	3.27	2.63	1.85	1.70	1.34	1.08	11.57		
	Region Summary	Average	0.51	0.58	0.56	0.57	0.66	0.66	0.62	0.63	0.52	0.45	0.46	0.44	0.55	
		Data Recovery %	95	95	96	96	96	96	95	96	96	95	96	96		
		Maximum	1.23	11.57	2.55	3.50	2.54	3.55	3.27	2.63	1.85	1.70	1.34	1.08	11.57	

Note: Monthly maxima and averages for individual stations are not reported if data recovery is <75% (a maximum is recorded, however, if there has been an exceedence of a policy objective)

24-Hour PM ₁₀ by TEOM		Policy Objective = 50 µg/m ³														
Region	Station	24 Hour Average (µg/m ³)	Jan	Feb	Mar	Apr	May	Jun	Jul	Aug	Sep	Oct	Nov	Dec	Annual	
CITY	Richmond	Average	17.2	16.5	16.9	16.8	17.6	17.6	16.5	18.2	16.5	16.2	16.3	16.9		
		Data Recovery%	100	100	100	97	87	100	94	68	73	90	100	100	92	
		No. of Exceedences	0	0	0	0	0	0	0	0	0	0	0	0	0	
	Maximum	33.6	31.9	31.8	28.5	29.4	42.4	32.9	29.7	34.6	23.3	27.3	42.4			
Region Summary	Average	17.2	16.5	16.9	16.8	17.6	17.6	16.5	16.7	18.2	16.5	16.2	16.3	16.9		
	Data Recovery%	100	100	100	97	87	100	94	68	73	90	100	100	92		
	Maximum	33.6	31.9	31.8	28.5	29.4	42.4	32.9	33.2	29.7	34.6	23.3	27.3	42.4		
EAST	Alphington	Average	16.4	14.4	17.0	16.5	17.1	17.8	15.8	15.2	17.2	14.4	15.5	16.2	16.1	
		Data Recovery%	100	93	100	90	100	100	100	100	100	100	93	87	97	
		No. of Exceedences	0	0	0	0	0	1	0	0	0	0	0	0	1	
		Maximum	31.8	28.1	35.2	28.4	31.3	50.3	31.6	24.4	28.9	30.9	26.0	24.6	50.3	
	Box.Hill	Average	17.2	15.8	17.5	16.0	16.9	15.3	14.5	14.9	17.7	15.2	15.0	15.8	16.0	
		Data Recovery%	100	86	100	100	100	100	100	100	100	100	100	100	99	
		No. of Exceedences	0	0	0	0	0	0	0	0	0	1	0	0	1	
		Maximum	35.3	28.9	32.9	26.6	26.4	31.7	28.5	24.3	25.7	50.5	25.8	25.3	50.5	
	Brighton	Average	18.2	16.2	17.3	15.9	16.1	15.6	15.6	14.7	17.9	14.8	15.7	17.7	16.3	
		Data Recovery%	100	100	100	100	100	93	100	100	100	100	93	97	99	
		No. of Exceedences	0	0	0	0	0	0	0	0	0	0	0	0	0	
		Maximum	30.1	29.2	31.2	28.4	28.1	41.9	29.9	28.0	28.7	29.2	23.8	27.0	41.9	
	Dandenong	Average	18.4	17.8	19.0	17.1	18.3	17.3	15.3	15.7	17.6	16.3	17.9	20.7	17.6	
		Data Recovery%	100	100	100	100	100	93	100	100	100	100	100	99		
		No. of Exceedences	0	0	0	0	0	0	0	0	0	0	0	0		
		Maximum	38.3	29.9	43.5	30.7	31.8	40.7	33.2	29.2	30.3	36.5	28.4	33.2	43.5	
	Mooroolbark	Average	16.6	16.6	18.2	19.3	19.9	19.8	16.8	18.0	19.7	16.8	17.5	17.4	18.1	
		Data Recovery%	100	93	100	100	100	100	100	100	100	100	97	100	99	
		No. of Exceedences	0	0	0	0	1	0	0	0	0	0	0	0	1	
		Maximum	36.1	33.0	36.2	35.7	50.1	46.9	36.3	36.0	31.7	35.3	34.2	28.3	50.1	
Region Summary	Average	17.4	16.1	17.8	17.0	17.7	17.2	15.6	15.7	18.0	15.5	16.3	17.6	16.8		
	Data Recovery%	100	94	100	98	100	97	100	100	100	100	97	97	99		
	Maximum	38.3	33.0	43.5	35.7	50.1	50.3	36.3	36.0	31.7	50.5	34.2	33.2	50.5		
WEST	Brooklyn	Average	23.9	23.7	24.3	21.0	17.3	23.1	19.0	27.2	28.6	22.8	22.9	22.1	22.9	
		Data Recovery%	94	89	90	100	100	100	100	94	100	100	93	100	97	
		No. of Exceedences	2	1	3	0	0	1	0	2	2	1	1	0	13	
		Maximum	56.0	73.0	58.2	44.2	47.8	66.6	34.0	56.2	71.9	53.9	54.3	45.4	73.0	
	Deer Park	Average	17.8	16.8	17.5	15.7	12.9	14.0	12.6	14.2	14.6	15.3	16.7	16.8	15.4	
		Data Recovery%	97	93	100	100	100	100	100	100	100	100	100	100	99	
		No. of Exceedences	0	0	0	0	0	0	0	0	0	0	0	0	0	
		Maximum	40.1	28.5	44.3	28.9	23.8	41.1	24.6	27.9	25.7	31.8	32.3	25.8	44.3	
	Footscray	Average	18.4	17.8	19.6	18.0	19.0	19.2	16.7	20.1	21.2	16.5	18.0	18.4	18.6	
		Data Recovery%	100	100	100	100	100	100	100	94	93	100	100	99		
No. of Exceedences		0	0	0	0	0	0	0	0	0	0	0	0			
Maximum		46.7	30.8	36.5	36.7	31.3	49.6	29.5	35.7	34.8	37.5	30.4	28.5	49.6		
Sunshine West	Average	19.0	18.1	20.6	19.3	18.1	19.4	17.0	18.6		17.1	16.5		18.4		
	Data Recovery%	100	100	94	77	97	100	100	97	13	94	87	42	83		
	No. of Exceedences	0	0	0	0	0	1	0	0	0	0	0	0	1		
	Maximum	43.2	30.2	43.6	31.9	32.8	60.2	33.7	37.8		28.0	30.5		60.2		
Region Summary	Average	19.8	19.1	20.5	18.5	16.8	19.0	16.3	20.0	19.5	17.9	18.5	19.2	18.7		
	Data Recovery%	98	96	96	94	99	100	100	96	77	98	95	85	95		
	Maximum	56.0	73.0	58.2	44.2	47.8	66.6	34.0	56.2	71.9	53.9	54.3	45.4	73.0		
GEELONG	GeelongSouth	Average	17.6	17.7	18.3	20.1	20.2	19.7	16.6	21.2	21.8	19.1	19.3	18.9	19.2	
		Data Recovery%	100	100	100	93	100	100	100	100	100	97	97	100	99	
		No. of Exceedences	0	0	0	0	2	0	0	0	0	0	0	0	2	
		Maximum	30.1	48.4	32.4	47.0	57.4	41.9	27.9	45.1	44.8	40.3	45.6	32.4	57.4	
Region Summary	Average	17.6	17.7	18.3	20.1	20.2	19.7	16.6	21.2	21.8	19.1	19.3	18.9	19.2		
	Data Recovery%	100	100	100	93	100	100	100	100	100	97	97	100	99		
	Maximum	30.1	48.4	32.4	47.0	57.4	41.9	27.9	45.1	44.8	40.3	45.6	32.4	57.4		
LATROBE VALLEY	Traralgon	Average	17.6	15.2	16.5	14.1	15.6	16.8	17.0	15.9	15.9	13.5	14.3	15.0	15.6	
		Data Recovery%	100	93	100	100	100	100	100	100	100	100	100	100	99	
		No. of Exceedences	0	0	0	0	0	0	0	0	0	0	0	0	0	
		Maximum	28.4	27.0	41.8	31.3	38.5	32.2	33.4	21.8	23.8	29.4	21.9	26.1	41.8	
Region Summary	Average	17.6	15.2	16.5	14.1	15.6	16.8	17.0	15.9	15.9	13.5	14.3	15.0	15.6		
	Data Recovery%	100	93	100	100	100	100	100	100	100	100	100	100	99		
	Maximum	28.4	27.0	41.8	31.3	38.5	32.2	33.4	21.8	23.8	29.4	21.9	26.1	41.8		

Note: Monthly maxima and averages for individual stations are not reported if data recovery is <75% (a maximum is recorded, however, if there has been an exceedence of a policy objective)



24-Hour PM ₁₀ by HiVol			Policy Objective = 50 µg/m ³													
Region	Station	24 Hour Average (µg/m ³)	Jan	Feb	Mar	Apr	May	Jun	Jul	Aug	Sep	Oct	Nov	Dec	Annual	
EAST	Alphington	Average	17.5	12.0	17.4	16.3	19.6	14.5	9.7	12.1	17.5	11.3	10.7	13.4	14.3	
		Data Recovery %	100	100	100	100	100	100	100	100	100	100	100	100	100	
		No. of Exceedences														0
		Maximum	30.0	14.0	25.0	25.1	29.0	20.9	11.9	18.3	20.8	15.3	14.8	16.9	30.0	
WEST	Footscray	Average								40	14.6	17.4	15.3	13.0	14.7	
		Data Recovery %									100	100	100	100	100	
		No. of Exceedences														0
		Maximum									21.6	20.6	18.6	18.6	16.6	21.6

Note: (1) HiVols are operated on a one day in six basis.
(2) Data recovery is based on the number of valid days
(3) Monthly maxima and averages for individual stations are not reported if data recovery is <75% (a maximum is recorded, however, if there has been an exceedence of a policy objective)

24-Hour PM _{2.5} by TEOM																
Region	Station	24 Hour Average (µg/m ³)	Jan	Feb	Mar	Apr	May	Jun	Jul	Aug	Sep	Oct	Nov	Dec	Annual	
EAST	Alphington	Average	4.9	4.3	5.3	6.1	6.0	5.5	4.4	5.5	4.5		3.5	4.2	4.9	
		Data Recovery %	100	93	100	90	97	100	100	100	87	87	52	87	87	90
		No. of Exceedences	0	0	0	0	0	0	0	0	0	0	0	0	0	0
		Maximum	10.1	8.6	14.4	15.8	15.6	20.2	12.3	11.9	11.8			6.8	13.1	20.2
WEST	Brooklyn	Average	6.5	6.0	6.2	7.0	5.5	5.2	3.8	5.5	4.7	5.3	3.7		5.3	
		Data Recovery %	94	86	90	100	100	100	100	94	100	81	90	68	92	
		No. of Exceedences	0	0	0	0	0	0	0	0	0	0	0	0	0	
		Maximum	13.7	12.3	15.5	17.6	16.0	18.4	9.9	10.7	9.2	11.2	8.8		18.4	
	Footscray	Average	5.2	3.9	5.3	5.7	4.5	4.1	3.6	4.1	4.3	4.6	4.7	4.7	4.6	
		Data Recovery %	100	96	100	100	94	100	100	100	100	100	100	100	100	
		No. of Exceedences	0	0	0	0	0	0	0	0	0	0	0	0	0	
		Maximum	10.9	9.5	13.0	15.4	12.3	15.7	9.7	9.4	10.2	10.7	10.3	11.2	15.7	
	Sunshine West	Average	5.3	4.4	5.4	5.4	4.5	4.6	3.5	4.6	4.2	4.0	4.2		4.5	
		Data Recovery %	100	100	90	77	97	100	100	97	97	94	87	42	90	
		No. of Exceedences	0	0	0	0	0	0	0	0	0	0	0	0	0	
		Maximum	11.0	9.9	12.6	12.1	13.2	17.1	8.9	9.7	10.1	10.2	9.8		17.1	

Note: Monthly maxima and averages for individual stations are not reported if data recovery is <75% (a maximum is recorded, however, if there has been an exceedence of a policy objective)

24-Hour PM _{2.5} by Partisol			Advisory Reporting Standard = 25 µg/m ³												
Region	Station	24 Hour Average (µg/m ³)	Jan	Feb	Mar	Apr	May	Jun	Jul	Aug	Sep	Oct	Nov	Dec	Annual
EAST	Alphington	Average	8.0	6.6	6.7	7.3	10.5		7.1	9.0	6.9	5.7	5.7	6.7	7.3
		Data Recovery %	100	100	100	100	100	70	100	90	100	100	100	90	96
		No. of Exceedences	0	0	0	0	0	0	0	0	0	0	0	0	0
		Maximum	13.1	9.5	12.2	13.9	18.6		21.2	17.3	12.5	13.3	8.8	15.6	21.2
WEST	Brooklyn	Average	8.3	7.6	7.3	7.1	7.7	7.6							7.4
		Data Recovery %	100	89	90	100	100	90	70						53
		No. of Exceedences	0	0	0	0	0	0	0						0
		Maximum	13.5	12.5	13.4	15.3	19.2	18.9							19.2
Footscray	Average	7.2	6.6	6.4	6.6	6.8	6.7	5.0	7.6	6.4	6.6	5.7	6.6	6.5	
	Data Recovery %	100	100	100	100	100	100	100	100	100	100	100	100	100	
	No. of Exceedences	0	0	0	0	0	0	0	0	0	0	0	0	0	
	Maximum	14.5	9.6	12.1	14.0	14.0	18.1	14.0	16.8	11.0	15.8	8.5	12.1	18.1	

Note: (1) Partisols are operated on a one day in three basis.
(2) Data recovery is based on the number of valid days
(3) Monthly maxima and averages for individual stations are not reported if data recovery is <75% (a maximum is recorded, however, if there has been an exceedence of a policy objective)



1-Hour Ozone			Policy Objective = 0.10 ppm													
Region	Station	1 Hour Average (ppm)	Jan	Feb	Mar	Apr	May	Jun	Jul	Aug	Sep	Oct	Nov	Dec	Annual	
EAST	Alphington	Average	0.015	0.012	0.013	0.010	0.011	0.012	0.016	0.013	0.019	0.018	0.019	0.020	0.015	
		Data Recovery %	93	90	95	88	94	95	94	95	95	95	95	86	93	
		Maximum	0.056	0.046	0.036	0.034	0.029	0.030	0.033	0.036	0.050	0.042	0.052	0.073	0.073	
	Box Hill	Average	0.015	0.011	0.013	0.010	0.010	0.012	0.015	0.012	0.018	0.018	0.018	0.018	0.018	0.014
		Data Recovery %	94	95	95	86	95	95	94	95	90	82	95	94	92	
		Maximum	0.068	0.054	0.036	0.036	0.030	0.030	0.030	0.032	0.045	0.044	0.056	0.068	0.068	
	Brighton	Average	0.016	0.014	0.015	0.012	0.015	0.013	0.016	0.013	0.020	0.021	0.021	0.019	0.016	
		Data Recovery %	94	95	95	95	96	95	95	95	95	92	90	93	94	
		Maximum	0.061	0.054	0.041	0.037	0.028	0.031	0.031	0.035	0.046	0.043	0.057	0.074	0.074	
	Dandenong	Average	0.017	0.014	0.014	0.011	0.011	0.012	0.016	0.013	0.021	0.021	0.021	0.018	0.016	
		Data Recovery %	94	95	95	95	95	94	94	95	94	95	95	94	95	
		Maximum	0.063	0.062	0.038	0.038	0.029	0.033	0.033	0.035	0.049	0.048	0.054	0.060	0.063	
Mooroolbark	Average	0.016	0.012	0.013	0.011	0.009	0.010	0.015	0.012	0.018	0.018	0.018	0.018	0.014		
	Data Recovery %	95	94	95	95	95	95	94	95	95	94	94	95	95		
	Maximum	0.071	0.051	0.041	0.032	0.028	0.026	0.029	0.032	0.045	0.039	0.049	0.078	0.078		
Region Summary	Average	0.016	0.013	0.013	0.011	0.011	0.012	0.015	0.013	0.019	0.019	0.019	0.018	0.015		
	Data Recovery %	94	94	95	92	95	95	94	95	93	92	94	92	94		
	Maximum	0.071	0.062	0.041	0.038	0.030	0.033	0.033	0.036	0.050	0.048	0.057	0.078	0.078		
WEST	Altona North	Average	0.018	0.015	0.014	0.011	0.013	0.011	0.013	0.011	0.018	0.019	0.018	0.017	0.015	
		Data Recovery %	93	93	94	94	94	94	93	94	95	94	94	83	93	
		Maximum	0.059	0.053	0.046	0.036	0.028	0.028	0.029	0.033	0.046	0.046	0.053	0.073	0.073	
	Deer Park	Average	0.016	0.014	0.014	0.012	0.013	0.014	0.017	0.014	0.021	0.019	0.018	0.018	0.016	
		Data Recovery %	95	89	95	94	95	95	94	94	95	95	95	94	94	
		Maximum	0.062	0.054	0.041	0.038	0.028	0.030	0.029	0.033	0.050	0.045	0.052	0.073	0.073	
	Footscray	Average	0.015	0.012	0.013	0.010	0.012	0.012	0.015	0.012	0.019	0.018	0.018	0.018	0.014	
		Data Recovery %	90	95	95	95	94	95	95	82	95	94	95	95	93	
		Maximum	0.056	0.046	0.036	0.035	0.030	0.030	0.029	0.033	0.049	0.045	0.050	0.078	0.078	
	Melton	Average	0.019	0.015	0.014	0.012	0.015	0.016	0.020	0.016	0.022	0.020	0.020	0.018	0.017	
		Data Recovery %	81	90	95	92	92	95	95	95	93	93	94	95	93	
		Maximum	0.071	0.062	0.042	0.035	0.028	0.029	0.033	0.036	0.049	0.043	0.054	0.070	0.071	
Point Cook	Average	0.021	0.017	0.018		0.018	0.013	0.012	0.015	0.022	0.022	0.021	0.021	0.018		
	Data Recovery %	93	95	82	40	95	94	94	94	94	94	95	89	88		
	Maximum	0.054	0.052	0.048		0.031	0.030	0.026	0.034	0.047	0.053	0.057	0.069	0.069		
Region Summary	Average	0.018	0.015	0.014	0.011	0.014	0.013	0.015	0.014	0.020	0.020	0.019	0.018	0.016		
	Data Recovery %	90	92	92	83	94	95	94	92	94	94	95	91	92		
	Maximum	0.071	0.062	0.048	0.038	0.031	0.030	0.033	0.036	0.050	0.053	0.057	0.078	0.078		
GEELONG	Geelong South	Average	0.016	0.015	0.016	0.013	0.014	0.016	0.018	0.014	0.021	0.022	0.019	0.017	0.017	
		Data Recovery %	95	95	95	93	95	95	95	95	95	94	95	94	95	
		Maximum	0.042	0.044	0.048	0.039	0.028	0.031	0.031	0.034	0.047	0.050	0.055	0.052	0.055	
	Point Henry	Average	0.016	0.015											0.016	
		Data Recovery %	89	79	34										17	
		Maximum	0.042	0.050											0.050	
Region Summary	Average	0.016	0.015	0.016	0.013	0.014	0.016	0.018	0.014	0.021	0.022	0.019	0.017	0.017		
	Data Recovery %	92	87	65	93	95	95	95	95	95	94	95	94	91		
	Maximum	0.042	0.050	0.048	0.039	0.028	0.031	0.031	0.034	0.047	0.050	0.055	0.052	0.055		
LATROBE VALLEY	Traralgon	Average	0.011	0.011	0.014	0.011	0.010	0.011	0.013	0.011	0.018	0.018	0.017	0.014	0.013	
		Data Recovery %	95	95	96	96	95	96	95	96	96	95	96	96	96	
		Maximum	0.037	0.050	0.039	0.031	0.025	0.028	0.030	0.033	0.041	0.039	0.040	0.042	0.050	
	Region Summary	Average	0.011	0.011	0.014	0.011	0.010	0.011	0.013	0.011	0.018	0.018	0.017	0.014	0.013	
	Data Recovery %	95	95	96	96	95	96	95	96	96	95	96	96	96		
	Maximum	0.037	0.050	0.039	0.031	0.025	0.028	0.030	0.033	0.041	0.039	0.040	0.042	0.050		



Note: Monthly maxima and averages for individual stations are not reported if data recovery is <75% (a maximum is recorded, however, if there has been an exceedance of a policy objective)



www.epa.vic.gov.au T: 03 9695 2722 F: 03 9695 2780

4-Hour Ozone			Policy Objective = 0.08 ppm												
Region	Station	4 Hour Average (ppm)	Jan	Feb	Mar	Apr	May	Jun	Jul	Aug	Sep	Oct	Nov	Dec	Annual
EAST	Alphington	Maximum	0.046	0.044	0.034	0.033	0.028	0.029	0.033	0.036	0.045	0.041	0.051	0.069	0.069
	Box Hill	Maximum	0.054	0.051	0.036	0.035	0.029	0.029	0.030	0.031	0.041	0.043	0.053	0.061	0.061
	Brighton	Maximum	0.054	0.046	0.037	0.036	0.028	0.030	0.030	0.034	0.041	0.042	0.056	0.063	0.063
	Dandenong	Maximum	0.056	0.058	0.037	0.035	0.028	0.031	0.032	0.034	0.043	0.047	0.054	0.058	0.058
	Mooroolbark	Maximum	0.059	0.045	0.036	0.030	0.024	0.025	0.028	0.031	0.042	0.038	0.049	0.069	0.069
	Region Summary	Maximum	0.059	0.058	0.037	0.036	0.029	0.031	0.033	0.036	0.045	0.047	0.056	0.069	0.069
WEST	Altona North	Maximum	0.053	0.047	0.039	0.033	0.028	0.028	0.029	0.032	0.040	0.045	0.050	0.057	0.057
	Deer Park	Maximum	0.054	0.050	0.038	0.037	0.027	0.030	0.028	0.032	0.046	0.044	0.051	0.067	0.067
	Footscray	Maximum	0.048	0.041	0.034	0.034	0.030	0.030	0.029	0.031	0.043	0.043	0.048	0.067	0.067
	Melton	Maximum	0.065	0.052	0.036	0.031	0.028	0.029	0.032	0.035	0.046	0.040	0.052	0.062	0.065
	Point Cook	Maximum	0.049	0.047	0.047		0.031	0.030	0.026	0.034	0.043	0.048	0.052	0.058	0.058
	Region Summary	Maximum	0.065	0.052	0.047	0.037	0.031	0.030	0.032	0.035	0.046	0.048	0.052	0.067	0.067
GEELONG	Geelong South	Maximum	0.041	0.039	0.043	0.037	0.027	0.030	0.030	0.033	0.044	0.044	0.052	0.049	0.052
	Point Henry	Maximum	0.036	0.048											0.048
	Region Summary	Maximum	0.041	0.048	0.043	0.037	0.027	0.030	0.030	0.033	0.044	0.044	0.052	0.049	0.052
LATROBE VALLEY	Traralgon	Maximum	0.035	0.044	0.037	0.030	0.023	0.027	0.030	0.032	0.038	0.038	0.036	0.037	0.044
	Region Summary	Maximum	0.035	0.044	0.037	0.030	0.023	0.027	0.030	0.032	0.038	0.038	0.036	0.037	0.044

Note: Monthly maxima for individual stations are not reported if data recovery is <75% (a maximum is recorded, however, if there has been an exceedance of a policy objective)

1-Hour Nitrogen Dioxide			Policy Objective = 0.12 ppm												
Region	Station	1 Hour Average (ppm)	Jan	Feb	Mar	Apr	May	Jun	Jul	Aug	Sep	Oct	Nov	Dec	Annual
CITY	Richmond	Average	0.010	0.010	0.010	0.013	0.016	0.016	0.015		0.012	0.011	0.011	0.007	0.012
		Data Recovery %	94	95	95	95	86	95	92	73	84	87	95	94	90
		Maximum	0.057	0.030	0.033	0.041	0.033	0.048	0.041		0.037	0.036	0.040	0.028	0.057
	Region Summary	Average	0.010	0.010	0.010	0.013	0.016	0.016	0.015	0.016	0.012	0.011	0.011	0.007	0.012
	Data Recovery %	94	95	95	95	86	95	92	73	84	87	95	94	90	
	Maximum	0.057	0.030	0.033	0.041	0.033	0.048	0.041	0.042	0.037	0.036	0.040	0.028	0.057	
EAST	Alphington	Average	0.008	0.009	0.009	0.011	0.013	0.013	0.013	0.013	0.011	0.010	0.009	0.006	0.010
		Data Recovery %	93	90	95	78	94	95	94	90	95	95	95	86	92
		Maximum	0.041	0.031	0.035	0.042	0.030	0.046	0.035	0.033	0.035	0.037	0.035	0.021	0.046
	Box Hill	Average	0.005	0.006	0.006	0.008	0.011	0.010	0.009	0.010	0.008	0.007	0.006	0.004	0.008
		Data Recovery %	94	95	95	94	95	95	95	95	95	95	95	94	95
		Maximum	0.035	0.020	0.035	0.033	0.028	0.029	0.030	0.031	0.032	0.030	0.028	0.017	0.035
	Brighton	Average	0.005	0.006	0.006	0.010	0.010	0.012	0.011	0.014	0.009	0.007	0.007	0.005	0.008
		Data Recovery %	94	95	95	95	96	95	95	95	95	94	90	93	94
		Maximum	0.034	0.028	0.035	0.034	0.033	0.042	0.032	0.034	0.036	0.031	0.036	0.021	0.042
	Dandenong	Average	0.007	0.008	0.009	0.011	0.013	0.013	0.012	0.015	0.011	0.010	0.009	0.007	0.011
		Data Recovery %	94	95	95	95	95	94	94	95	94	95	95	94	95
		Maximum	0.032	0.033	0.034	0.037	0.037	0.039	0.033	0.035	0.041	0.034	0.039	0.025	0.041
Mooroolbark	Average	0.005	0.005	0.006	0.007	0.010	0.009	0.008	0.009	0.008	0.007	0.006	0.004	0.007	
	Data Recovery %	95	94	95	94	95	95	94	95	95	94	94	95	95	
	Maximum	0.031	0.020	0.022	0.029	0.028	0.025	0.027	0.026	0.026	0.027	0.032	0.017	0.032	
Region Summary	Average	0.006	0.007	0.007	0.010	0.012	0.011	0.010	0.012	0.009	0.008	0.007	0.005	0.009	
	Data Recovery %	94	94	95	91	95	95	94	94	95	95	94	92	94	
	Maximum	0.041	0.033	0.035	0.042	0.037	0.046	0.035	0.035	0.041	0.037	0.039	0.025	0.046	
WEST	AltonaNorth	Average	0.006	0.006	0.007		0.010	0.012	0.011	0.014	0.010	0.008	0.008	0.005	0.009
		Data Recovery %	93	93	95	70	94	94	93	94	95	94	94	83	91
		Maximum	0.040	0.042	0.029		0.038	0.038	0.038	0.034	0.036	0.035	0.044	0.031	0.044
	Deer Park	Average	0.006	0.007	0.007	0.008	0.009	0.009	0.008	0.010	0.007	0.007	0.007	0.005	0.007
		Data Recovery %	95	95	95	94	95	95	94	94	94	95	92	94	94
		Maximum	0.024	0.025	0.027	0.037	0.030	0.051	0.036	0.037	0.030	0.035	0.038	0.024	0.051
Footscray	Average	0.008	0.008	0.009	0.012	0.012	0.014	0.013		0.011	0.011	0.010	0.007	0.011	
	Data Recovery %	94	95	95	95	94	95	95	64	95	94	95	95	92	
	Maximum	0.051	0.031	0.032	0.045	0.034	0.053	0.037		0.034	0.040	0.046	0.025	0.053	
Point Cook	Average	0.004			0.006	0.005	0.007	0.006	0.009	0.005	0.005	0.004	0.003	0.005	
	Data Recovery %	93	72	71	89	95	83	90	94	90	94	95	90	88	
	Maximum	0.026			0.032	0.028	0.034	0.026	0.033	0.032	0.034	0.038	0.022	0.038	
Region Summary	Average	0.006	0.007	0.007	0.009	0.009	0.011	0.009	0.012	0.008	0.008	0.007	0.005	0.008	
	Data Recovery %	94	89	89	87	95	92	93	87	94	94	94	91	91	
	Maximum	0.051	0.042	0.032	0.045	0.038	0.053	0.038	0.039	0.036	0.040	0.046	0.031	0.053	
GEELONG	Geelong South	Average	0.004	0.004	0.005	0.008	0.009	0.008	0.007	0.011	0.007	0.006	0.006	0.004	0.007
		Data Recovery %	95	95	95	93	95	95	95	95	95	94	95	94	95
		Maximum	0.023	0.022	0.023	0.030	0.035	0.040	0.027	0.031	0.031	0.026	0.021	0.015	0.040
	Region Summary	Average	0.004	0.004	0.005	0.008	0.009	0.008	0.007	0.011	0.007	0.006	0.006	0.004	0.007
	Data Recovery %	95	95	95	93	95	95	95	95	95	94	95	94	95	
	Maximum	0.023	0.022	0.023	0.030	0.035	0.040	0.027	0.031	0.031	0.026	0.021	0.015	0.040	
LATROBE VALLEY	Traralgon	Average	0.005	0.005	0.005	0.006	0.009	0.009	0.009	0.010	0.008	0.007	0.006	0.005	0.007
		Data Recovery %	95	95	96	95	96	96	92	96	95	95	96	95	95
		Maximum	0.020	0.019	0.024	0.027	0.028	0.025	0.028	0.034	0.028	0.022	0.026	0.018	0.034
	Region Summary	Average	0.005	0.005	0.005	0.006	0.009	0.009	0.009	0.010	0.008	0.007	0.006	0.005	0.007
	Data Recovery %	95	95	96	95	96	96	92	96	95	95	96	95	95	
	Maximum	0.020	0.019	0.024	0.027	0.028	0.025	0.028	0.034	0.028	0.022	0.026	0.018	0.034	



Note: Monthly maxima and averages for individual stations are not reported if data recovery is <75% (a maximum is recorded, however, if there has been an exceedence of a policy objective)



www.epa.vic.gov.au T: 03 9695 2722 F: 03 9695 2780

8-Hour Carbon Monoxide															
Policy Objective = 9.0 ppm															
Region	Station	8 Hour Average (ppm)	Jan	Feb	Mar	Apr	May	Jun	Jul	Aug	Sep	Oct	Nov	Dec	Annual
CITY	Richmond	Average	0.3	0.3	0.3	0.4	0.4	0.4	0.3	0.3	0.3	0.2	0.1	0.3	
		Data Recovery %	94	95	95	94	81	95	81	70	60	69	95	94	85
		Maximum	0.9	0.8	0.8	1.2	1.5	2.6	1.3				0.5	0.3	2.6
	Region Summary	Average	0.3	0.3	0.3	0.4	0.4	0.4	0.3	0.3	0.1	0.2	0.2	0.1	0.3
	Data Recovery %	94	95	95	94	81	95	81	70	60	69	95	94	85	
	Maximum	0.9	0.8	0.8	1.2	1.5	2.6	1.3	1.5	0.6	0.6	0.5	0.3	2.6	
EAST	Alphington	Average	0.0	0.0	0.0	0.1	0.2	0.3	0.2	0.2	0.1	0.1	0.0	0.0	0.1
		Data Recovery %	93	89	95	88	89	95	91	94	94	95	94	86	92
		Maximum	0.2	0.2	0.4	0.9	1.9	2.9	1.8	1.5	0.5	0.3	0.2	0.1	2.9
	Box Hill	Average	0.2	0.2	0.2	0.4	0.5	0.5	0.4	0.4	0.3	0.3	0.2	0.2	0.3
		Data Recovery %	94	95	95	93	95	95	94	93	95	95	95	94	94
		Maximum	0.7	0.8	0.8	1.5	2.1	2.5	1.9	1.5	1.0	1.0	0.8	0.8	2.5
	Mooroolbark	Average	0.2	0.2	0.2	0.3	0.4	0.4	0.3	0.4	0.3	0.2	0.2	0.1	0.3
		Data Recovery %	95	94	95	95	95	95	94	95	93	94	94	95	95
Maximum		0.7	0.7	0.6	0.9	1.6	1.5	1.2	1.4	1.0	0.6	0.9	0.7	1.6	
Region Summary	Average	0.2	0.2	0.2	0.4	0.5	0.6	0.4	0.4	0.3	0.3	0.2	0.2	0.3	
	Data Recovery %	94	93	95	92	93	95	93	94	94	95	94	91	94	
	Maximum	0.7	0.8	0.8	1.5	2.1	2.9	1.9	1.5	1.0	1.0	0.9	0.8	2.9	
WEST	Footscray	Average	0.2	0.1	0.1	0.2	0.2	0.2	0.2	0.2	0.1	0.1	0.2	0.2	
		Data Recovery %	94	95	95	95	95	95	95	92	91	94	93	41	89
		Maximum	0.5	0.5	0.6	0.6	0.8	1.3	1.1	1.0	0.5	0.6	0.6	0.6	1.3
	Region Summary	Average	0.2	0.1	0.1	0.2	0.2	0.2	0.2	0.2	0.1	0.1	0.2	0.1	0.2
	Data Recovery %	94	95	95	95	95	95	95	92	91	94	93	41	89	
	Maximum	0.5	0.5	0.6	0.6	0.8	1.3	1.1	1.0	0.5	0.6	0.6	0.6	1.3	
GEELONG	Geelong South	Average	0.2	0.2	0.2	0.3	0.3	0.2	0.2	0.3	0.2	0.1	0.1	0.1	0.2
		Data Recovery %	95	95	95	93	95	95	95	95	95	94	95	94	95
		Maximum	0.5	0.4	0.5	0.7	1.4	2.1	0.8	1.1	0.6	0.7	0.5	0.4	2.1
	Region Summary	Average	0.2	0.2	0.2	0.3	0.3	0.2	0.2	0.3	0.2	0.1	0.1	0.1	0.2
	Data Recovery %	95	95	95	93	95	95	95	95	95	94	95	94	95	
	Maximum	0.5	0.4	0.5	0.7	1.4	2.1	0.8	1.1	0.6	0.7	0.5	0.4	2.1	

Note: Monthly maxima and averages for individual stations are not reported if data recovery is <75% (a maximum is recorded, however, if there has been an exceedence of a policy objective)

1-Hour Sulfur Dioxide																
Policy Objective = 0.20 ppm																
Region	Station	1 Hour Average(ppm)	Jan	Feb	Mar	Apr	May	Jun	Jul	Aug	Sep	Oct	Nov	Dec	Annual	
EAST	Alphington	Average	0.001	0.000		0.001	0.001	0.000	0.000	0.000	0.000	0.000	0.000	0.000	0.000	
		Data Recovery %	89	86	69	86	90	91	90	90	91	91	92	82	87	
		Maximum	0.008	0.005		0.007	0.011	0.006	0.006	0.004	0.004	0.004	0.009	0.006	0.006	0.011
	Box Hill	Average	-0.001	-0.001	-0.001	-0.001	-0.001	-0.001	-0.001	-0.001	-0.001	-0.002	-0.001	-0.002	-0.002	-0.001
		Data Recovery %	82	95	95	94	95	95	95	86	93	89	85	95	94	91
		Maximum	0.003	0.002	0.005	0.002	0.010	0.003	0.002	0.002	0.002	0.001	0.004	0.002	0.002	0.010
	Region Summary	Average	0.000	0.000	-0.001	0.000	0.000	0.000	0.000	0.000	-0.001	-0.001	-0.001	-0.001	-0.001	0.000
	Data Recovery %	86	91	82	90	93	93	93	88	92	90	88	94	88	89	
	Maximum	0.008	0.005	0.005	0.007	0.011	0.006	0.006	0.006	0.004	0.004	0.009	0.006	0.006	0.011	
WEST	Altona North	Average	0.002	0.002	0.002	0.002	0.001	0.002	0.001	0.001	0.001	0.001	0.001	0.001	0.001	
		Data Recovery %	92	93	94	93	94	94	93	94	95	94	93	83	93	
		Maximum	0.025	0.024	0.035	0.046	0.024	0.040	0.047	0.012	0.022	0.019	0.031	0.030	0.047	
	Footscray	Average	0.002	0.001	0.000	0.001	0.001	0.001	0.000	0.001	0.000	0.001	0.001	0.001	0.001	
		Data Recovery %	94	95	95	95	95	95	95	94	95	94	95	94	95	
		Maximum	0.032	0.012	0.007	0.018	0.019	0.017	0.011	0.022	0.015	0.016	0.014	0.020	0.032	
	Region Summary	Average	0.002	0.001	0.001	0.002	0.001	0.001	0.001	0.001	0.001	0.001	0.001	0.001	0.001	
	Data Recovery %	93	94	95	94	95	95	94	94	95	94	94	94	89	94	
	Maximum	0.032	0.024	0.035	0.046	0.024	0.040	0.047	0.022	0.022	0.019	0.031	0.030	0.047		
GEELONG	Geelong South	Average	0.001	0.001	0.001	0.001	0.001	0.001	0.001	0.001	0.001	0.001	0.001	0.001	0.001	
		Data Recovery %	95	95	94	93	95	95	95	94	94	94	88	84	93	
		Maximum	0.017	0.014	0.021	0.022	0.030	0.017	0.030	0.030	0.033	0.029	0.019	0.027	0.033	
	Region Summary	Average	0.001	0.001	0.001	0.001	0.001	0.001	0.001	0.001	0.001	0.001	0.001	0.001	0.001	
	Data Recovery %	95	95	94	93	95	95	95	94	94	94	88	84	93		
	Maximum	0.017	0.014	0.021	0.022	0.030	0.017	0.030	0.030	0.033	0.029	0.019	0.027	0.033		
	LATROBE VALLEY	Traralgon	Average	0.001	0.001	0.001	0.001	0.002	0.002	0.002	0.002	0.001	0.002	0.002	0.002	0.002
			Data Recovery %	95	95	96	96	96	96	95	93	95	95	95	95	95
			Maximum	0.016	0.016	0.025	0.015	0.021	0.015	0.017	0.021	0.013	0.013	0.015	0.038	0.038
Region Summary		Average	0.001	0.001	0.001	0.001	0.002	0.002	0.002	0.002	0.001	0.002	0.002	0.002	0.002	
Data Recovery %		95	95	96	96	96	96	95	93	95	95	95	95	95		
Maximum		0.016	0.016	0.025	0.015	0.021	0.015	0.017	0.021	0.013	0.013	0.015	0.038	0.038		

Note: Monthly maxima and averages for individual stations are not reported if data recovery is <75% (a maximum is recorded, however, if there has been an exceedance of a policy objective)

24-Hour Sulfur Dioxide															
Policy Objective = 0.08 ppm															
Region	Station	24 Hour Average (ppm)	Jan	Feb	Mar	Apr	May	Jun	Jul	Aug	Sep	Oct	Nov	Dec	Annual
EAST	Alphington	Maximum	0.002	0.001		0.003	0.002	0.002	0.002	0.001	0.001	0.001	0.001	0.002	0.003
	Box Hill	Maximum	0.000	0.000	0.001	0.000	0.001	0.000	0.000	0.000	-0.001	0.000	-0.001	-0.001	0.001
	Region Summary	Maximum	0.002	0.001	0.001	0.003	0.002	0.002	0.002	0.001	0.001	0.001	0.001	0.002	0.003
WEST	Altona North	Maximum	0.007	0.008	0.010	0.010	0.006	0.012	0.008	0.003	0.007	0.003	0.009	0.006	0.012
	Footscray	Maximum	0.008	0.004	0.002	0.004	0.002	0.004	0.003	0.003	0.002	0.003	0.003	0.002	0.008
	Region Summary	Maximum	0.008	0.008	0.010	0.010	0.006	0.012	0.008	0.003	0.007	0.003	0.009	0.006	0.012
GEELONG	Geelong South	Maximum	0.003	0.003	0.004	0.005	0.005	0.004	0.004	0.004	0.005	0.005	0.004	0.003	0.005
	Region Summary	Maximum	0.003	0.003	0.004	0.005	0.005	0.004	0.004	0.004	0.005	0.005	0.004	0.003	0.005
LATROBE VALLEY	Traralgon	Maximum	0.003	0.004	0.004	0.003	0.004	0.003	0.005	0.003	0.003	0.003	0.004	0.005	0.005
	Region Summary	Maximum	0.003	0.004	0.004	0.003	0.004	0.003	0.005	0.003	0.003	0.003	0.004	0.005	0.005

