



# VICTORIA'S AIR QUALITY 2012 AIR MONITORING DATA

- Section 1 - Report Card** an assessment of compliance with the air quality goals and objectives
- Section 2 - Trend analysis** an update of the overall trends in air quality in Melbourne
- Section 3 - Monthly Data Tables** tabulated monthly air quality statistics

## Section 1- Report Card

### Compliance with Air Quality Objectives

Assessment of Victoria's air quality on a station-by-station basis

The numbers in the table indicate the number of days the objectives were not met.

Region	Station	Particles			Ozone		NO <sub>2</sub>		CO	SO <sub>2</sub>			
		Visibility	PM <sub>10</sub>	PM <sub>2.5</sub>	1 hr	4 hr	1 hr	1 year	8hr	1 hr	24 hr	1 year	
M E L B O U R N E	City	Richmond	3	0				0	0	0			
		Alphington	4	0	0	0*	0*	0*	0*	0*	0*	0*	0*
	East	Box Hill	1	0		0	0	0*	0*	0	0	0	0
		Brighton	4*	0		0	0	0	0				
		Dandenong	6	0		0	0	0	0				
		Mooroolbark	12	2		0	0	0	0	0			
		Altona North				0	0	0	0		0	0	0
	West	Brooklyn	9	30									
		Deer Park	5	1		0	0	0	0				
		Footscray	4	3	1	0*	0*	0*	0*	0*	0*	0*	0*
		Melton				0	0						
		Point Cook	7			0	0	0	0				
		Yarraville (Francis St)	4*	1*				0*	0*				
	GEELONG	Geelong South	5	1		0	0	0	0	0	0	0	0
LATROBE VALLEY	Morwell East	8*	0*	0*			0*			0*	0*		
	Traralgon	21	0		0	0	0	0		0	0	0	

	Objective and Goal met		Exceeded the Objective, but met the Goal		Goal not Met	*	Insufficient data to demonstrate compliance
--	------------------------	--	--	--	--------------	---	---

\* Monitoring for this pollutant did not meet the 75% data capture target (ie. data capture in each quarter of the year)

On an annual basis, EPA assesses the air quality monitored at each station against the state and national air quality objectives and goals.

The numbers presented in the Table show the number of days that an air quality objective was not met.

Shading is used to indicate the assessment against the goals, with:

- *Green shading* indicating that the 2012 goal was met;
- *Red shading*, that the 2012 goal was not met; and
- *Yellow shading*, that whilst the 2012 goal was met, there were still days when the objective was not met

Monitoring instruments not meeting the data capture target are indicated by an asterisk and cells are not shaded yellow or green.

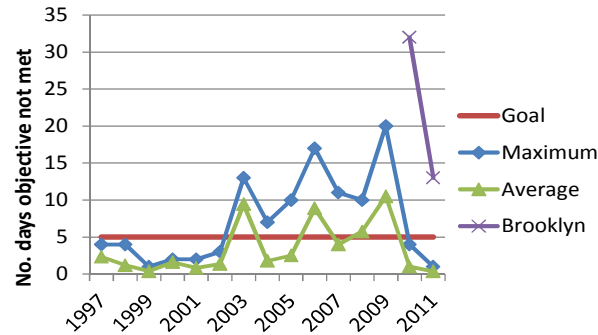
A blank cell indicates that monitoring for a particular pollutant was not performed at this station.

Note, for PM<sub>2.5</sub> there is no 2011 goal and monitoring occurs on a one-day-in-three basis.

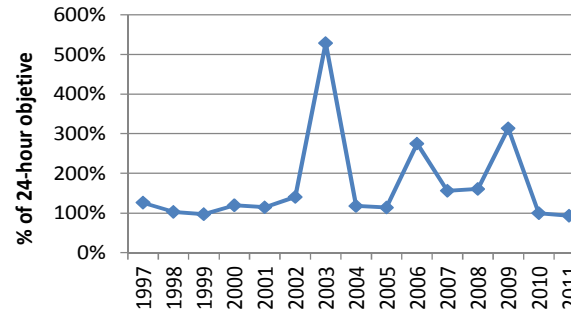
## Section 2 - Trend analysis

### Trends of air quality in Melbourne

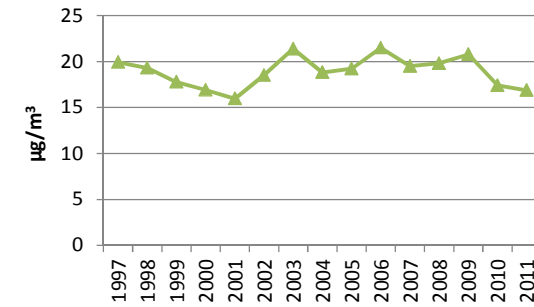
#### 1. Particles smaller than 10 µm (PM<sub>10</sub>)



(a) Days not meeting the PM<sub>10</sub> objective<sup>#</sup>

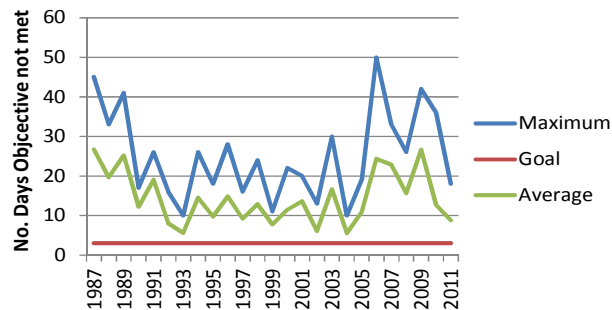


(b) Maximum 24-hour PM<sub>10</sub>

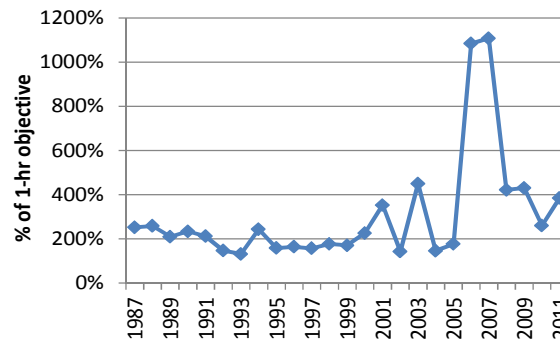


(c) Annual average PM<sub>10</sub>

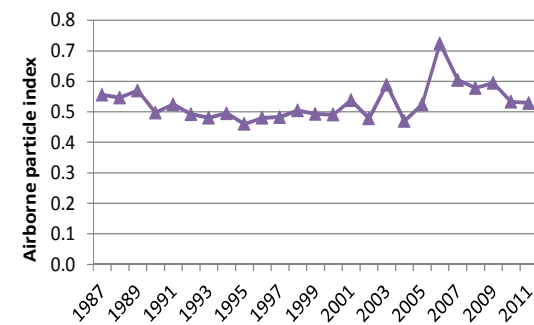
#### 2. Visibility measured as API



(a) Days not meeting the visibility objective



(b) Maximum 1-hour API



(c) Annual average API

A range of trend parameters for Melbourne are presented:

- Days not meeting the objective – Two values for this parameter are presented. The maximum number gives the value for the station recording the highest number of days not meeting the air quality objective each year (that is, the worst performing station that year). The average number (calculated by averaging the number of days at each station in Melbourne) is a better indicator for how Melbourne is performing overall rather than simply looking at an individual station.

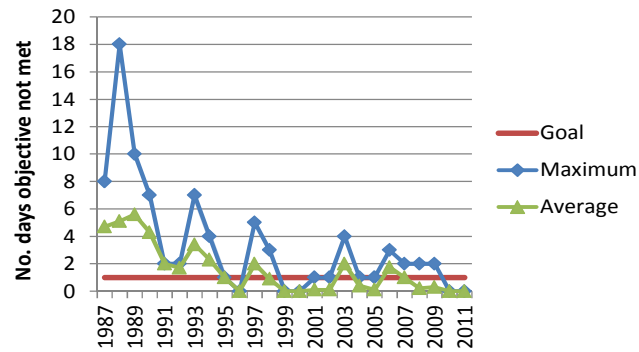
- Maximum pollutant levels – This looks at the highest pollutant levels recorded over the year. The value is calculated by averaging the maximum pollutant levels recorded at each monitoring station in Melbourne over any one year.

- Average pollutant levels – In addition to the peak levels, we are also interested in the average pollutant level across Melbourne for the year. This is calculated by averaging levels from each station.

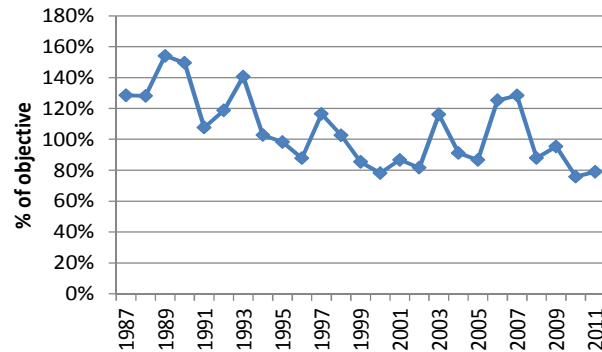
# Brooklyn is not a long term trend station. It has been included to illustrate the local impact relative to the long term trend.

## Trends of air quality in Melbourne (continued)

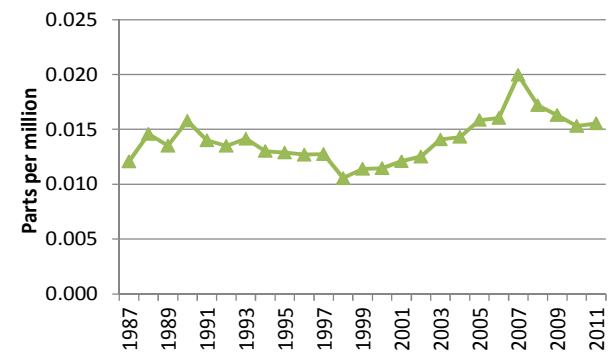
### 3. Ozone



(a) Days not meeting the four-hour ozone objective

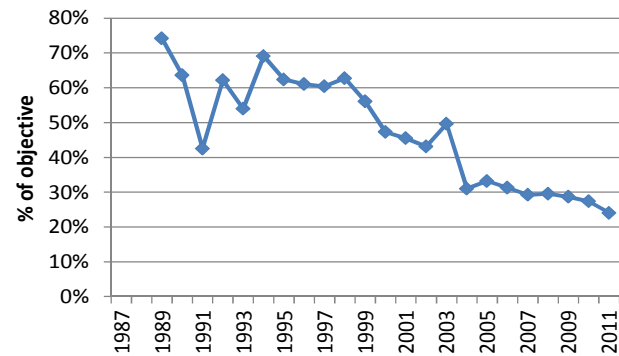


(b) Maximum four-hour ozone

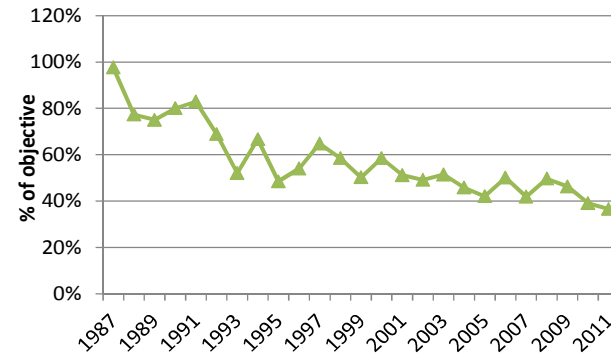


(c) Annual average ozone

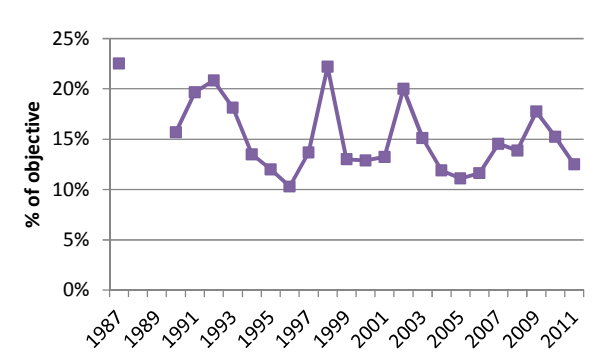
### 4. Other gases



(a) Maximum eight-hour CO



(b) Maximum one-hour NO<sub>2</sub>



(c) Maximum one-hour SO<sub>2</sub>





<b>24-Hour PM<sub>2.5</sub> by Partisol</b>			<b>Advisory Reporting Standard = 25 µg/m<sup>3</sup></b>													
<b>Region</b>	<b>Station</b>	<b>24 Hour Average (µg/m<sup>3</sup>)</b>	<b>Jan</b>	<b>Feb</b>	<b>Mar</b>	<b>Apr</b>	<b>May</b>	<b>Jun</b>	<b>Jul</b>	<b>Aug</b>	<b>Sep</b>	<b>Oct</b>	<b>Nov</b>	<b>Dec</b>	<b>Annual</b>	
EAST	Alphington	Average	7.2	6.2	5.9	8.1	6.8	7.4	8.0	5.2	7.6	5.2	6.4	5.7	<b>6.6</b>	
		Data Recovery %	90	100	100	100	100	100	100	100	100	100	100	100	90	<b>98</b>
		No. of Exceedences	0	0	0	0	0	0	0	0	0	0	0	0	0	<b>0</b>
		Maximum	10.0	10.6	13.8	19.0	10.8	15.1	18.2	10.2	12.9	7.5	11.4	6.7	<b>19.0</b>	
WEST	Footscray	Average	6.1	6.7	5.8	8.2	6.0	6.0	5.8	4.5	7.0	5.5	6.5	5.8	<b>6.1</b>	
		Data Recovery %	100	100	100	100	100	100	100	100	100	100	100	100	<b>100</b>	
		No. of Exceedences	0	0	0	0	0	0	0	0	0	0	0	0	<b>0</b>	
		Maximum	9.1	12.7	14.0	23.1	9.3	15.5	10.5	11.2	13.6	8.6	10.4	7.1	<b>23.1</b>	
	Francis St (Yarraville)	Average						9.3	8.7	6.4	8.3	7.0	8.0	7.4	<b>8.0</b>	
		Data Recovery %					9	90	100	100	100	100	100	100	<b>58</b>	
		No. of Exceedences					0	0	0	0	0	0	0	0	<b>0</b>	
		Maximum						19.9	15.0	14.2	15.2	12.6	12.4	10.8	<b>19.9</b>	

**Note:** (1) Partisols are operated on a one day in three basis.  
(2) Data recovery is based on the number of valid days

<b>24-Hour PM<sub>2.5</sub> by BAM</b>																
<b>Region</b>	<b>Station</b>	<b>24 Hour Average (µg/m<sup>3</sup>)</b>	<b>Jan</b>	<b>Feb</b>	<b>Mar</b>	<b>Apr</b>	<b>May</b>	<b>Jun</b>	<b>Jul</b>	<b>Aug</b>	<b>Sep</b>	<b>Oct</b>	<b>Nov</b>	<b>Dec</b>	<b>Annual</b>	
Latrobe Valley	Morwell East	Average			8.8	8.5	7.2	7.4	7.9	5.9	5.7	5.6	6.2	5.8	<b>6.9</b>	
		Data Recovery %		62	81	100	100	100	100	100	100	97	100	100	100	<b>87</b>
		No. of Exceedences		0	0	0	0	0	0	0	0	0	0	0	0	<b>0</b>
		Maximum			24.8	16.8	18.8	13.4	16.3	12.7	12.3	12.7	11.7	10.1	<b>24.8</b>	

<b>24-Hour PM<sub>2.5</sub> by TEOM</b>															
<b>Region</b>	<b>Station</b>	<b>24 Hour Average (µg/m<sup>3</sup>)</b>	<b>Jan</b>	<b>Feb</b>	<b>Mar</b>	<b>Apr</b>	<b>May</b>	<b>Jun</b>	<b>Jul</b>	<b>Aug</b>	<b>Sep</b>	<b>Oct</b>	<b>Nov</b>	<b>Dec</b>	<b>Annual</b>
EAST	Alphington	Average	4.2	3.2	3.9	6.7	3.1	5.1	4.2	3.3	4.7	4.3	5.2	4.2	<b>4.3</b>
		Data Recovery %	100	62	100	87	94	87	94	87	100	94	93	100	<b>92</b>
		No. of Exceedences	0	0	0	0	0	0	0	0	0	0	0	0	<b>0</b>
		Maximum	12.5	6.8	12.2	21.1	11.2	14.0	10.6	10.2	10.1	8.1	10.9	9.8	<b>21.1</b>
WEST	Footscray	Average	4.9	5.0	4.3	7.3	4.2	3.6	3.3	2.5	4.3	3.8	4.3	4.6	<b>4.4</b>
		Data Recovery %	100	100	100	100	94	93	94	94	93	100	100	100	<b>97</b>
		No. of Exceedences	0	0	0	1	0	0	0	0	0	0	0	0	<b>1</b>
		Maximum	13.9	13.1	12.4	26.3	7.6	10.4	12.7	7.0	11.8	9.5	10.8	10.7	<b>26.3</b>



1-Hour Ozone			Policy Objective = 0.10 ppm													
Region	Station	1 Hour Average (ppm)	Jan	Feb	Mar	Apr	May	Jun	Jul	Aug	Sep	Oct	Nov	Dec	Annual	
EAST	Alphington	Average	0.016		0.012		0.013	0.010							0.013	
		Data Recovery %	81	21	82	20	94	85	7	0	0	0	0	0	33	
		Maximum	0.057		0.038		0.030	0.028								0.057
	Box Hill	Average	0.017	0.016	0.013	0.014	0.012	0.012	0.012	0.018	0.018	0.020	0.019	0.019	0.019	0.016
		Data Recovery %	93	94	95	89	95	95	89	92	95	94	95	96	96	94
		Maximum	0.060	0.058	0.046	0.053	0.028	0.029	0.029	0.030	0.038	0.044	0.062	0.051	0.062	
	Brighton	Average	0.018	0.017	0.015	0.013	0.010	0.008	0.012	0.019	0.019	0.022	0.021	0.019	0.019	0.016
		Data Recovery %	95	91	95	94	95	95	94	94	94	94	95	96	95	95
		Maximum	0.069	0.062	0.043	0.049	0.023	0.022	0.031	0.031	0.034	0.045	0.061	0.052	0.069	
	Dandenong	Average	0.018	0.017	0.015	0.015	0.012	0.011	0.011	0.017	0.018	0.020	0.017	0.017	0.017	0.016
Data Recovery %		95	95	95	94	88	93	94	94	96	95	95	96	96	94	
Maximum		0.063	0.068	0.041	0.041	0.028	0.030	0.029	0.030	0.033	0.043	0.061	0.049	0.068		
Mooroolbark	Average	0.017	0.017	0.014	0.014	0.012	0.012	0.012	0.017	0.018	0.018	0.019	0.018	0.018	0.016	
	Data Recovery %	94	95	95	95	95	95	94	94	96	95	96	95	95	95	
	Maximum	0.077	0.056	0.049	0.070	0.030	0.029	0.029	0.030	0.035	0.038	0.058	0.058	0.077		
<b>Region Summary</b>	<b>Average</b>	<b>0.017</b>	<b>0.017</b>	<b>0.014</b>	<b>0.014</b>	<b>0.012</b>	<b>0.011</b>	<b>0.012</b>	<b>0.018</b>	<b>0.018</b>	<b>0.020</b>	<b>0.019</b>	<b>0.018</b>	<b>0.016</b>		
	<b>Data Recovery %</b>	<b>91</b>	<b>79</b>	<b>93</b>	<b>78</b>	<b>93</b>	<b>93</b>	<b>76</b>	<b>75</b>	<b>76</b>	<b>76</b>	<b>76</b>	<b>76</b>	<b>82</b>		
	<b>Maximum</b>	<b>0.077</b>	<b>0.068</b>	<b>0.049</b>	<b>0.070</b>	<b>0.030</b>	<b>0.030</b>	<b>0.031</b>	<b>0.031</b>	<b>0.038</b>	<b>0.045</b>	<b>0.062</b>	<b>0.058</b>	<b>0.077</b>		
WEST	Altona North	Average	0.016	0.016	0.014	0.010	0.010	0.013	0.012	0.018	0.018	0.020	0.020	0.018	0.016	
		Data Recovery %	92	95	79	83	90	96	92	96	95	95	95	96	92	
		Maximum	0.067	0.070	0.042	0.051	0.028	0.031	0.032	0.032	0.035	0.050	0.062	0.053	0.070	
	Deer Park	Average	0.017	0.016	0.014	0.014	0.015	0.014	0.014	0.020	0.019	0.020	0.020	0.019	0.017	
		Data Recovery %	94	95	95	94	95	95	95	95	95	94	79	85	92	
		Maximum	0.065	0.062	0.038	0.043	0.029	0.030	0.032	0.031	0.034	0.050	0.043	0.050	0.065	
	Footscray	Average	0.017	0.015	0.013			0.011	0.011	0.018	0.017	0.019	0.018		0.015	
		Data Recovery %	95	95	95	49	47	95	94	94	95	94	80	0	78	
		Maximum	0.057	0.057	0.038			0.027	0.032	0.032	0.033	0.044	0.042		0.057	
	Melton	Average	0.019	0.018	0.015	0.016	0.016	0.016	0.016	0.021	0.020	0.021	0.022	0.019	0.018	
Data Recovery %		85	81	95	95	95	92	92	92	95	94	89	96	92		
Maximum		0.063	0.063	0.042	0.045	0.028	0.029	0.031	0.030	0.034	0.050	0.068	0.060	0.068		
Point Cook	Average	0.019	0.019	0.017	0.018	0.017	0.016	0.016	0.021	0.021	0.023	0.022	0.020	0.019		
	Data Recovery %	95	95	95	95	92	90	91	95	95	93	94	96	94		
	Maximum	0.077	0.092	0.048	0.059	0.031	0.032	0.033	0.032	0.035	0.058	0.063	0.060	0.092		
<b>Region Summary</b>	<b>Average</b>	<b>0.017</b>	<b>0.017</b>	<b>0.015</b>	<b>0.015</b>	<b>0.014</b>	<b>0.014</b>	<b>0.014</b>	<b>0.019</b>	<b>0.019</b>	<b>0.020</b>	<b>0.021</b>	<b>0.019</b>	<b>0.017</b>		
	<b>Data Recovery %</b>	<b>92</b>	<b>92</b>	<b>92</b>	<b>83</b>	<b>84</b>	<b>94</b>	<b>93</b>	<b>94</b>	<b>95</b>	<b>94</b>	<b>87</b>	<b>74</b>	<b>90</b>		
	<b>Maximum</b>	<b>0.077</b>	<b>0.092</b>	<b>0.048</b>	<b>0.059</b>	<b>0.031</b>	<b>0.032</b>	<b>0.033</b>	<b>0.032</b>	<b>0.035</b>	<b>0.058</b>	<b>0.068</b>	<b>0.060</b>	<b>0.092</b>		
GEELONG	Geelong South	Average	0.016	0.016	0.016	0.016	0.016	0.015	0.014	0.019	0.019	0.019	0.019	0.017	0.017	
		Data Recovery %	94	95	95	94	94	94	89	95	94	94	94	95	94	
		Maximum	0.055	0.064	0.048	0.058	0.031	0.029	0.030	0.031	0.035	0.039	0.079	0.063	0.079	
<b>Region Summary</b>	<b>Average</b>	<b>0.016</b>	<b>0.016</b>	<b>0.016</b>	<b>0.016</b>	<b>0.016</b>	<b>0.015</b>	<b>0.014</b>	<b>0.019</b>	<b>0.019</b>	<b>0.019</b>	<b>0.019</b>	<b>0.017</b>	<b>0.017</b>		
	<b>Data Recovery %</b>	<b>94</b>	<b>95</b>	<b>95</b>	<b>94</b>	<b>94</b>	<b>94</b>	<b>89</b>	<b>95</b>	<b>94</b>	<b>94</b>	<b>94</b>	<b>95</b>	<b>94</b>		
	<b>Maximum</b>	<b>0.055</b>	<b>0.064</b>	<b>0.048</b>	<b>0.058</b>	<b>0.031</b>	<b>0.029</b>	<b>0.030</b>	<b>0.031</b>	<b>0.035</b>	<b>0.039</b>	<b>0.079</b>	<b>0.063</b>	<b>0.079</b>		
LATROBE VALLEY	Traralgon	Average	0.013	0.011	0.012	0.013	0.012	0.011	0.010	0.015	0.018	0.018	0.016	0.016	0.014	
		Data Recovery %	94	95	95	95	95	95	95	95	95	95	95	95	95	
		Maximum	0.050	0.054	0.035	0.036	0.029	0.032	0.029	0.031	0.039	0.043	0.048	0.049	0.054	
<b>Region Summary</b>	<b>Average</b>	<b>0.013</b>	<b>0.011</b>	<b>0.012</b>	<b>0.013</b>	<b>0.012</b>	<b>0.011</b>	<b>0.010</b>	<b>0.015</b>	<b>0.018</b>	<b>0.018</b>	<b>0.016</b>	<b>0.016</b>	<b>0.014</b>		
	<b>Data Recovery %</b>	<b>94</b>	<b>95</b>	<b>95</b>	<b>95</b>	<b>95</b>	<b>95</b>	<b>95</b>	<b>95</b>	<b>95</b>	<b>95</b>	<b>95</b>	<b>95</b>	<b>95</b>		
	<b>Maximum</b>	<b>0.050</b>	<b>0.054</b>	<b>0.035</b>	<b>0.036</b>	<b>0.029</b>	<b>0.032</b>	<b>0.029</b>	<b>0.031</b>	<b>0.039</b>	<b>0.043</b>	<b>0.048</b>	<b>0.049</b>	<b>0.054</b>		



Note: Monthly maxima and averages for individual stations are not reported if data recovery is <75% (a maximum is recorded, however, if there has been an exceedence of a policy objective)



www.epa.vic.gov.au T: 03 9695 2722 F: 03 9695 2780



<b>4-Hour Ozone</b>			<b>Policy Objective = 0.08 ppm</b>													
<b>Region</b>	<b>Station</b>	<b>4 Hour Average (ppm)</b>	<b>Jan</b>	<b>Feb</b>	<b>Mar</b>	<b>Apr</b>	<b>May</b>	<b>Jun</b>	<b>Jul</b>	<b>Aug</b>	<b>Sep</b>	<b>Oct</b>	<b>Nov</b>	<b>Dec</b>	<b>Annual</b>	
<b>EAST</b>	Alphington	Maximum	0.054		0.037		0.030	0.027							0.054	
		No. of Exceedences	0	0	0	0	0	0	0	0	0	0	0	0	0	0
	Box Hill	Maximum	0.053	0.052	0.040	0.045	0.027	0.027	0.028	0.029	0.036	0.042	0.061	0.049	0.061	0.061
		No. of Exceedences	0	0	0	0	0	0	0	0	0	0	0	0	0	0
	Brighton	Maximum	0.065	0.060	0.041	0.048	0.023	0.021	0.031	0.030	0.034	0.044	0.060	0.051	0.065	0.065
		No. of Exceedences	0	0	0	0	0	0	0	0	0	0	0	0	0	0
	Dandenong	Maximum	0.061	0.066	0.041	0.040	0.026	0.030	0.028	0.030	0.032	0.040	0.059	0.048	0.066	0.066
No. of Exceedences		0	0	0	0	0	0	0	0	0	0	0	0	0	0	
Mooroolbark	Maximum	0.069	0.051	0.044	0.066	0.029	0.029	0.028	0.029	0.034	0.037	0.056	0.056	0.069	0.069	
	No. of Exceedences	0	0	0	0	0	0	0	0	0	0	0	0	0	0	
	<b>Region Summary</b>	<b>Maximum</b>	<b>0.069</b>	<b>0.066</b>	<b>0.044</b>	<b>0.066</b>	<b>0.030</b>	<b>0.030</b>	<b>0.031</b>	<b>0.030</b>	<b>0.036</b>	<b>0.044</b>	<b>0.061</b>	<b>0.056</b>	<b>0.069</b>	
<b>WEST</b>	Altona North	Maximum	0.059	0.057	0.039	0.045	0.028	0.030	0.032	0.031	0.035	0.048	0.062	0.049	0.062	
		No. of Exceedences	0	0	0	0	0	0	0	0	0	0	0	0	0	0
	Deer Park	Maximum	0.059	0.053	0.036	0.042	0.029	0.030	0.031	0.031	0.033	0.040	0.041	0.046	0.059	0.059
		No. of Exceedences	0	0	0	0	0	0	0	0	0	0	0	0	0	0
	Footscray	Maximum	0.052	0.048	0.037			0.027	0.031	0.032	0.033	0.039	0.040		0.052	0.052
		No. of Exceedences	0	0	0	0	0	0	0	0	0	0	0	0	0	0
	Melton	Maximum	0.060	0.048	0.040	0.044	0.028	0.029	0.029	0.030	0.033	0.045	0.061	0.053	0.061	0.061
No. of Exceedences		0	0	0	0	0	0	0	0	0	0	0	0	0	0	
Point Cook	Maximum	0.065	0.073	0.043	0.055	0.030	0.032	0.033	0.032	0.035	0.054	0.060	0.050	0.073	0.073	
	No. of Exceedences	0	0	0	0	0	0	0	0	0	0	0	0	0	0	
	<b>Region Summary</b>	<b>Maximum</b>	<b>0.065</b>	<b>0.073</b>	<b>0.043</b>	<b>0.055</b>	<b>0.030</b>	<b>0.032</b>	<b>0.033</b>	<b>0.032</b>	<b>0.035</b>	<b>0.054</b>	<b>0.062</b>	<b>0.053</b>	<b>0.073</b>	
<b>GEELONG</b>	Geelong South	Maximum	0.051	0.059	0.047	0.054	0.030	0.029	0.030	0.031	0.033	0.035	0.070	0.056	0.070	
		No. of Exceedences	0	0	0	0	0	0	0	0	0	0	0	0	0	
	<b>Region Summary</b>	<b>Maximum</b>	<b>0.051</b>	<b>0.059</b>	<b>0.047</b>	<b>0.054</b>	<b>0.030</b>	<b>0.029</b>	<b>0.030</b>	<b>0.031</b>	<b>0.033</b>	<b>0.035</b>	<b>0.070</b>	<b>0.056</b>	<b>0.070</b>	
<b>LATROBE VALLEY</b>	Traralgon	Maximum	0.046	0.053	0.032	0.032	0.027	0.031	0.028	0.030	0.038	0.040	0.040	0.046	0.053	
		No. of Exceedences	0	0	0	0	0	0	0	0	0	0	0	0	0	
	<b>Region Summary</b>	<b>Maximum</b>	<b>0.046</b>	<b>0.053</b>	<b>0.032</b>	<b>0.032</b>	<b>0.027</b>	<b>0.031</b>	<b>0.028</b>	<b>0.030</b>	<b>0.038</b>	<b>0.040</b>	<b>0.040</b>	<b>0.046</b>	<b>0.053</b>	

**Note:** Monthly maxima for individual stations are not reported if data recovery is <75% (a maximum is recorded, however, if there has been an exceedence of a policy objective)

1-Hour Nitrogen Dioxide			Policy Objective = 0.12 ppm												
Region	Station	1 Hour Average (ppm)	Jan	Feb	Mar	Apr	May	Jun	Jul	Aug	Sep	Oct	Nov	Dec	Annual
CITY	Richmond	Average	0.006	0.009	0.009	0.014		0.015	0.015	0.011	0.011	0.011	0.011	0.007	0.011
		Data Recovery %	95	91	95	94	74	92	83	95	95	93	96	96	91
		Maximum	0.036	0.038	0.036	0.046		0.050	0.037	0.036	0.038	0.042	0.029	0.038	0.050
	<b>Region Summary</b>	<b>Average</b>	<b>0.006</b>	<b>0.009</b>	<b>0.009</b>	<b>0.014</b>	<b>0.013</b>	<b>0.015</b>	<b>0.015</b>	<b>0.011</b>	<b>0.011</b>	<b>0.011</b>	<b>0.011</b>	<b>0.009</b>	<b>0.007</b>
	<b>Data Recovery %</b>	<b>95</b>	<b>91</b>	<b>95</b>	<b>94</b>	<b>74</b>	<b>92</b>	<b>83</b>	<b>95</b>	<b>95</b>	<b>93</b>	<b>96</b>	<b>96</b>	<b>91</b>	
	<b>Maximum</b>	<b>0.036</b>	<b>0.038</b>	<b>0.036</b>	<b>0.046</b>	<b>0.040</b>	<b>0.050</b>	<b>0.037</b>	<b>0.036</b>	<b>0.038</b>	<b>0.042</b>	<b>0.029</b>	<b>0.038</b>	<b>0.050</b>	
EAST	Alphington	Average	0.006		0.008		0.012	0.012							0.009
		Data Recovery %	81	21	82	20	94	85	7	0	0	0	0	0	33
		Maximum	0.032		0.031		0.034	0.036							0.037
	Box Hill	Average	0.003	0.006	0.007	0.010	0.011	0.011	0.012	0.008	0.009	0.008	0.007	0.007	0.008
		Data Recovery %	93	94	95	84	95	95	89	92	95	94	95	95	12
		Maximum	0.026	0.023	0.033	0.034	0.032	0.028	0.030	0.032	0.034	0.027	0.030		0.034
	Brighton	Average	0.004	0.006	0.006	0.010	0.010	0.012	0.013	0.009	0.009	0.007	0.005	0.005	0.008
		Data Recovery %	95	86	95	94	95	95	95	94	94	94	95	96	94
		Maximum	0.026	0.039	0.034	0.035	0.034	0.041	0.036	0.032	0.034	0.034	0.023	0.034	0.041
	Dandenong	Average	0.006		0.009	0.012	0.013	0.014	0.015	0.011	0.010	0.009	0.009	0.006	0.010
Data Recovery %		95	73	95	94	88	94	94	96	95	95	96	96	93	
Maximum		0.028		0.038	0.040	0.033	0.043	0.034	0.031	0.031	0.040	0.029	0.040	0.043	
Mooroolbark	Average	0.004	0.005	0.006	0.007	0.009	0.009	0.009	0.007	0.007	0.007	0.006	0.004	0.007	
	Data Recovery %	94	95	95	95	82	95	94	96	95	96	95	95	94	
	Maximum	0.023	0.029	0.028	0.027	0.023	0.027	0.027	0.026	0.028	0.025	0.024	0.023	0.029	
<b>Region Summary</b>	<b>Average</b>	<b>0.005</b>	<b>0.006</b>	<b>0.007</b>	<b>0.010</b>	<b>0.011</b>	<b>0.012</b>	<b>0.012</b>	<b>0.009</b>	<b>0.009</b>	<b>0.008</b>	<b>0.007</b>	<b>0.005</b>	<b>0.008</b>	
	<b>Data Recovery %</b>	<b>91</b>	<b>74</b>	<b>93</b>	<b>77</b>	<b>91</b>	<b>93</b>	<b>76</b>	<b>75</b>	<b>76</b>	<b>76</b>	<b>60</b>	<b>80</b>		
	<b>Maximum</b>	<b>0.032</b>	<b>0.039</b>	<b>0.038</b>	<b>0.040</b>	<b>0.034</b>	<b>0.043</b>	<b>0.036</b>	<b>0.032</b>	<b>0.034</b>	<b>0.040</b>	<b>0.030</b>	<b>0.040</b>	<b>0.043</b>	
WEST	AltonaNorth	Average	0.005	0.006	0.006	0.013	0.011	0.013	0.014	0.010	0.010	0.009	0.007	0.006	0.009
		Data Recovery %	92	95	72	66	90	96	92	94	94	94	95	96	90
		Maximum	0.029	0.046	0.035	0.040	0.031	0.043	0.039	0.036	0.034	0.040	0.039	0.046	0.046
	Deer Park	Average	0.004	0.005	0.005	0.008	0.007	0.008	0.008	0.005	0.006	0.005	0.005	0.005	0.006
		Data Recovery %	94	95	95	94	95	95	95	95	94	94	79	85	93
		Maximum	0.037	0.048	0.024	0.044	0.031	0.037	0.037	0.031	0.036	0.038	0.021	0.037	0.048
	Footscray	Average	0.006	0.008	0.009	0.013	0.012	0.014	0.014	0.009	0.011	0.010	0.008		0.010
		Data Recovery %	95	95	95	94	95	95	94	95	94	80	0		85
		Maximum	0.037	0.058	0.031	0.049	0.034	0.042	0.039	0.038	0.041	0.041	0.031		0.058
	Point Cook	Average	0.002	0.003	0.004	0.006	0.006	0.007	0.007	0.005	0.005	0.004	0.003	0.003	0.004
Data Recovery %		81	94	95	95	92	91	91	95	95	93	94	96	93	
Maximum		0.018	0.029	0.036	0.033	0.028	0.037	0.039	0.029	0.033	0.031	0.029	0.037	0.039	
Yarraville (Francis St)	Average						0.017	0.018	0.014	0.016	0.014	0.010	0.010	0.015	
	Data Recovery %					32	87	95	95	96	93	95	95	57	
	Maximum						0.053	0.049	0.047	0.041	0.050	0.043	0.055	0.055	
<b>Region Summary</b>	<b>Average</b>	<b>0.004</b>	<b>0.006</b>	<b>0.006</b>	<b>0.010</b>	<b>0.009</b>	<b>0.012</b>	<b>0.013</b>	<b>0.008</b>	<b>0.010</b>	<b>0.009</b>	<b>0.007</b>	<b>0.006</b>	<b>0.008</b>	
	<b>Data Recovery %</b>	<b>90</b>	<b>95</b>	<b>89</b>	<b>87</b>	<b>81</b>	<b>93</b>	<b>93</b>	<b>95</b>	<b>94</b>	<b>89</b>	<b>74</b>	<b>90</b>		
	<b>Maximum</b>	<b>0.037</b>	<b>0.058</b>	<b>0.036</b>	<b>0.049</b>	<b>0.040</b>	<b>0.053</b>	<b>0.049</b>	<b>0.047</b>	<b>0.041</b>	<b>0.050</b>	<b>0.043</b>	<b>0.055</b>	<b>0.058</b>	
GEELONG	Geelong South	Average	0.003	0.005	0.005	0.008	0.008	0.009		0.007	0.006	0.006	0.004	0.006	
		Data Recovery %	94	95	95	94	94	95	72	95	95	94	94	63	
		Maximum	0.016	0.029	0.027	0.041	0.029	0.033		0.029	0.031	0.026	0.021	0.041	
	<b>Region Summary</b>	<b>Average</b>	<b>0.003</b>	<b>0.005</b>	<b>0.005</b>	<b>0.008</b>	<b>0.008</b>	<b>0.009</b>	<b>0.010</b>	<b>0.007</b>	<b>0.006</b>	<b>0.006</b>	<b>0.004</b>	<b>0.004</b>	<b>0.006</b>
	<b>Data Recovery %</b>	<b>94</b>	<b>95</b>	<b>95</b>	<b>94</b>	<b>94</b>	<b>95</b>	<b>72</b>	<b>95</b>	<b>95</b>	<b>94</b>	<b>94</b>	<b>63</b>	<b>90</b>	
	<b>Maximum</b>	<b>0.016</b>	<b>0.029</b>	<b>0.027</b>	<b>0.041</b>	<b>0.029</b>	<b>0.033</b>	<b>0.031</b>	<b>0.029</b>	<b>0.031</b>	<b>0.026</b>	<b>0.021</b>	<b>0.025</b>	<b>0.041</b>	
LATROBE VALLEY	Morwell East	Average			0.004	0.005	0.017	0.006	0.007	0.006	0.005	0.004	0.004	0.003	
		Data Recovery %			89	97	97	97	95	96	95	95	96	95	79
		Maximum			0.018	0.031	0.040	0.023	0.023	0.024	0.025	0.026	0.022	0.016	0.040
	Traralgon	Average	0.005	0.005	0.006	0.007	0.009	0.008	0.009	0.008	0.007	0.006	0.005	0.004	0.007
Data Recovery %		94	76	95	96	95	95	95	95	95	95	95	95	94	
Maximum		0.024	0.016	0.019	0.032	0.025	0.026	0.027	0.029	0.029	0.020	0.023	0.026	0.032	
<b>Region Summary</b>	<b>Average</b>	<b>0.005</b>	<b>0.005</b>	<b>0.005</b>	<b>0.006</b>	<b>0.013</b>	<b>0.007</b>	<b>0.008</b>	<b>0.007</b>	<b>0.006</b>	<b>0.005</b>	<b>0.004</b>	<b>0.004</b>	<b>0.006</b>	
	<b>Data Recovery %</b>	<b>94</b>	<b>76</b>	<b>92</b>	<b>96</b>	<b>96</b>	<b>95</b>	<b>95</b>	<b>95</b>	<b>95</b>	<b>95</b>	<b>95</b>	<b>95</b>	<b>94</b>	
	<b>Maximum</b>	<b>0.024</b>	<b>0.016</b>	<b>0.019</b>	<b>0.032</b>	<b>0.040</b>	<b>0.026</b>	<b>0.027</b>	<b>0.029</b>	<b>0.029</b>	<b>0.026</b>	<b>0.023</b>	<b>0.026</b>	<b>0.040</b>	

Note: Monthly maxima and averages for individual stations are not reported if data recovery is <75% (a maximum is recorded, however, if there has been an exceedence of a policy objective)



<b>8-Hour Carbon Monoxide</b>		<b>Policy Objective = 9.0 ppm</b>													
<b>Region</b>	<b>Station</b>	<b>8 Hour Average (ppm)</b>	<b>Jan</b>	<b>Feb</b>	<b>Mar</b>	<b>Apr</b>	<b>May</b>	<b>Jun</b>	<b>Jul</b>	<b>Aug</b>	<b>Sep</b>	<b>Oct</b>	<b>Nov</b>	<b>Dec</b>	<b>Annual</b>
<b>CITY</b>	Richmond	Average	0.2	0.2	0.2	0.4		0.3	0.3	0.2	0.2	0.2	0.2	0.2	0.2
		Data Recovery %	91	91	95	94	74	95	93	95	95	93	96	96	92
		Maximum	0.5	0.7	0.6	1.7		2.2	1.5	1.4	0.8	0.4	0.6	0.5	2.2
	<b>Region Summary</b>	<b>Average</b>	<b>0.2</b>	<b>0.2</b>	<b>0.2</b>	<b>0.4</b>	<b>0.2</b>	<b>0.3</b>	<b>0.3</b>	<b>0.2</b>	<b>0.2</b>	<b>0.2</b>	<b>0.2</b>	<b>0.2</b>	<b>0.2</b>
	<b>Data Recovery %</b>	<b>91</b>	<b>91</b>	<b>95</b>	<b>94</b>	<b>74</b>	<b>95</b>	<b>93</b>	<b>95</b>	<b>95</b>	<b>93</b>	<b>96</b>	<b>96</b>	<b>92</b>	
	<b>Maximum</b>	<b>0.5</b>	<b>0.7</b>	<b>0.6</b>	<b>1.7</b>	<b>1.2</b>	<b>2.2</b>	<b>1.5</b>	<b>1.4</b>	<b>0.8</b>	<b>0.4</b>	<b>0.6</b>	<b>0.5</b>	<b>2.2</b>	
<b>EAST</b>	Alphington	Average	0.0		0.1		0.3	0.3							0.2
		Data Recovery %	81	21	82	20	94	85	7						33
		Maximum	0.2		0.6		1.3	1.6							1.6
	Box Hill	Average	0.2	0.3	0.3	0.4	0.3	0.3	0.4	0.3	0.3		0.2	0.1	0.3
		Data Recovery %	93	94	95	84	94	95	89	92	93	74	95	96	91
		Maximum	0.8	0.9	1.2	1.5	1.4	1.5	2.0	1.2	1.3		0.4	0.5	2.0
	Mooroolbark	Average		0.1	0.2	0.3	0.4	0.4		0.2	0.3	0.2	0.1	0.1	0.2
		Data Recovery %	75	95	95	95	95	92	53	93	96	95	96	95	89
Maximum			0.4	0.6	1.1	1.8	1.1		1.1	1.1	1.1	0.4	0.4	2.1	
<b>Region Summary</b>	<b>Average</b>	<b>0.2</b>	<b>0.2</b>	<b>0.3</b>	<b>0.4</b>	<b>0.5</b>	<b>0.5</b>	<b>0.5</b>	<b>0.3</b>	<b>0.3</b>	<b>0.2</b>	<b>0.1</b>	<b>0.1</b>	<b>0.3</b>	
	<b>Data Recovery %</b>	<b>83</b>	<b>70</b>	<b>91</b>	<b>66</b>	<b>94</b>	<b>91</b>	<b>50</b>	<b>93</b>	<b>94</b>	<b>85</b>	<b>95</b>	<b>95</b>	<b>84</b>	
	<b>Maximum</b>	<b>0.8</b>	<b>0.9</b>	<b>1.2</b>	<b>1.5</b>	<b>1.8</b>	<b>1.6</b>	<b>2.1</b>	<b>1.2</b>	<b>1.3</b>	<b>1.1</b>	<b>0.4</b>	<b>0.5</b>	<b>2.1</b>	
<b>WEST</b>	Footscray	Average	0.1	0.1	0.1	0.2	0.1	0.2	0.2		0.2	0.3	0.2		0.2
		Data Recovery %	95	95	95	94	95	95	94	49	95	94	80		82
		Maximum	0.4	0.5	0.5	0.9	1.0	1.0	1.1		0.6	0.5	0.4		1.1
	<b>Region Summary</b>	<b>Average</b>	<b>0.1</b>	<b>0.1</b>	<b>0.1</b>	<b>0.2</b>	<b>0.1</b>	<b>0.2</b>	<b>0.2</b>	<b>0.1</b>	<b>0.2</b>	<b>0.3</b>	<b>0.2</b>	<b>0.2</b>	<b>0.2</b>
	<b>Data Recovery %</b>	<b>95</b>	<b>95</b>	<b>95</b>	<b>94</b>	<b>95</b>	<b>95</b>	<b>94</b>	<b>49</b>	<b>95</b>	<b>94</b>	<b>80</b>	<b>0</b>	<b>82</b>	
	<b>Maximum</b>	<b>0.4</b>	<b>0.5</b>	<b>0.5</b>	<b>0.9</b>	<b>1.0</b>	<b>1.0</b>	<b>1.1</b>	<b>0.8</b>	<b>0.6</b>	<b>0.5</b>	<b>0.4</b>	<b>0.4</b>	<b>1.1</b>	
<b>GEELONG</b>	Geelong South	Average	0.1	0.2	0.2	0.2	0.2	0.3	0.3	0.2	0.2	0.2	0.1	0.2	0.2
		Data Recovery %	94	95	95	94	94	94	94	95	95	94	94	95	94
		Maximum	1.2	0.6	0.8	0.7	0.9	1.7	0.9	1.0	0.7	0.4	0.4	0.5	1.7
	<b>Region Summary</b>	<b>Average</b>	<b>0.1</b>	<b>0.2</b>	<b>0.2</b>	<b>0.2</b>	<b>0.2</b>	<b>0.3</b>	<b>0.3</b>	<b>0.2</b>	<b>0.2</b>	<b>0.2</b>	<b>0.1</b>	<b>0.2</b>	<b>0.2</b>
	<b>Data Recovery %</b>	<b>94</b>	<b>95</b>	<b>95</b>	<b>94</b>	<b>94</b>	<b>94</b>	<b>94</b>	<b>95</b>	<b>95</b>	<b>94</b>	<b>94</b>	<b>95</b>	<b>94</b>	
	<b>Maximum</b>	<b>1.2</b>	<b>0.6</b>	<b>0.8</b>	<b>0.7</b>	<b>0.9</b>	<b>1.7</b>	<b>0.9</b>	<b>1.0</b>	<b>0.7</b>	<b>0.4</b>	<b>0.4</b>	<b>0.5</b>	<b>1.7</b>	

**Note:** Monthly maxima and averages for individual stations are not reported if data recovery is <75% (a maximum is recorded, however, if there has been an exceedence of a policy objective)

1-Hour Sulfur Dioxide			Policy Objective = 0.20 ppm													
Region	Station	1 Hour Average (ppm)	Jan	Feb	Mar	Apr	May	Jun	Jul	Aug	Sep	Oct	Nov	Dec	Annual	
EAST	Alphington	Average	0.000		0.001		0.001	0.000							0.000	
		Data Recovery %	77	20	78	19	90	84	7	0	0	0	0	0	31	
		Maximum	0.011		0.014		0.008	0.005							0.014	
	Box Hill	Average	-0.002	-0.001	-0.001	0.000	0.000	0.000	0.000	0.000	0.000	0.000	0.000	0.000	0.000	0.000
		Data Recovery %	93	94	95	81	95	95	89	92	92	91	95	96	92	
		Maximum	0.014	0.002	0.011	0.008	0.005	0.005	0.004	0.003	0.003	0.004	0.006	0.005	0.014	
<b>Region Summary</b>	<b>Average</b>	<b>-0.001</b>	<b>-0.001</b>	<b>0.000</b>	<b>0.000</b>	<b>0.000</b>	<b>0.000</b>	<b>0.001</b>	<b>0.000</b>	<b>0.000</b>	<b>0.000</b>	<b>0.000</b>	<b>0.000</b>	<b>0.000</b>	<b>0.000</b>	
<b>Data Recovery %</b>	<b>85</b>	<b>57</b>	<b>87</b>	<b>50</b>	<b>93</b>	<b>90</b>	<b>48</b>	<b>46</b>	<b>46</b>	<b>45</b>	<b>48</b>	<b>48</b>	<b>48</b>	<b>62</b>		
<b>Maximum</b>	<b>0.014</b>	<b>0.002</b>	<b>0.014</b>	<b>0.008</b>	<b>0.008</b>	<b>0.005</b>	<b>0.004</b>	<b>0.003</b>	<b>0.003</b>	<b>0.004</b>	<b>0.006</b>	<b>0.005</b>	<b>0.005</b>	<b>0.014</b>		
WEST	Altona North	Average	0.002	0.001	0.002	0.002	0.002	0.002	0.002	0.001	0.001	0.002	0.001	0.002	0.002	
		Data Recovery %	92	94	75	92	90	96	92	96	94	95	95	96	92	
		Maximum	0.060	0.031	0.048	0.043	0.027	0.032	0.066	0.026	0.022	0.032	0.021	0.027	0.066	
	Footscray	Average	0.001	0.001	0.001	0.001	0.000	0.001	0.000	0.000	0.000	0.001	0.001	0.001	0.001	
		Data Recovery %	95	95	95	94	95	95	94	93	95	94	80	0	85	
		Maximum	0.017	0.014	0.012	0.024	0.013	0.022	0.019	0.007	0.014	0.020	0.012		0.024	
<b>Region Summary</b>	<b>Average</b>	<b>0.002</b>	<b>0.001</b>	<b>0.001</b>	<b>0.002</b>	<b>0.001</b>	<b>0.001</b>	<b>0.001</b>	<b>0.001</b>	<b>0.000</b>	<b>0.001</b>	<b>0.001</b>	<b>0.001</b>	<b>0.002</b>	<b>0.001</b>	
<b>Data Recovery %</b>	<b>93</b>	<b>94</b>	<b>85</b>	<b>93</b>	<b>92</b>	<b>95</b>	<b>93</b>	<b>95</b>	<b>94</b>	<b>95</b>	<b>87</b>	<b>48</b>	<b>89</b>			
<b>Maximum</b>	<b>0.060</b>	<b>0.031</b>	<b>0.048</b>	<b>0.043</b>	<b>0.027</b>	<b>0.032</b>	<b>0.066</b>	<b>0.026</b>	<b>0.022</b>	<b>0.032</b>	<b>0.021</b>	<b>0.027</b>	<b>0.066</b>			
GEELONG	Geelong South	Average	0.001	0.001	0.001	0.001	0.001	0.001	0.001	0.001	0.001	0.001	0.001	0.001	0.001	
		Data Recovery %	80	93	94	92	92	91	90	92	91	90	91	91	90	
		Maximum	0.017	0.018	0.021	0.053	0.016	0.019	0.024	0.019	0.014	0.017	0.060	0.041	0.060	
	<b>Region Summary</b>	<b>Average</b>	<b>0.001</b>	<b>0.001</b>	<b>0.001</b>	<b>0.001</b>	<b>0.001</b>	<b>0.001</b>	<b>0.001</b>	<b>0.001</b>	<b>0.001</b>	<b>0.001</b>	<b>0.001</b>	<b>0.001</b>	<b>0.001</b>	
<b>Data Recovery %</b>	<b>80</b>	<b>93</b>	<b>94</b>	<b>92</b>	<b>92</b>	<b>91</b>	<b>90</b>	<b>92</b>	<b>91</b>	<b>90</b>	<b>91</b>	<b>91</b>	<b>90</b>			
<b>Maximum</b>	<b>0.017</b>	<b>0.018</b>	<b>0.021</b>	<b>0.053</b>	<b>0.016</b>	<b>0.019</b>	<b>0.024</b>	<b>0.019</b>	<b>0.014</b>	<b>0.017</b>	<b>0.060</b>	<b>0.041</b>	<b>0.060</b>			
LATROBE VALLEY	Morwell East	Average			0.000	0.000	0.000	0.000	0.000	0.000	0.001	0.001	0.001	0.001	0.000	
		Data Recovery %		72	89	97	96	97	95	96	94	95	96	95	85	
		Maximum			0.007	0.008	0.012	0.004	0.007	0.010	0.016	0.017	0.052	0.035	0.052	
	Traralgon	Average	0.002	0.002	0.002	0.002	0.002	0.001	0.001	0.002	0.002	0.002	0.002	0.002	0.002	
		Data Recovery %	94	95	95	96	95	95	95	95	95	95	95	95	95	
		Maximum	0.085	0.014	0.014	0.015	0.016	0.021	0.005	0.008	0.024	0.014	0.101	0.022	0.101	
<b>Region Summary</b>	<b>Average</b>	<b>0.002</b>	<b>0.001</b>	<b>0.001</b>	<b>0.001</b>	<b>0.001</b>	<b>0.001</b>	<b>0.001</b>	<b>0.001</b>	<b>0.001</b>	<b>0.001</b>	<b>0.002</b>	<b>0.001</b>	<b>0.001</b>		
<b>Data Recovery %</b>	<b>94</b>	<b>84</b>	<b>92</b>	<b>96</b>	<b>96</b>	<b>96</b>	<b>95</b>	<b>95</b>	<b>95</b>	<b>95</b>	<b>95</b>	<b>95</b>	<b>94</b>			
<b>Maximum</b>	<b>0.085</b>	<b>0.014</b>	<b>0.014</b>	<b>0.015</b>	<b>0.016</b>	<b>0.021</b>	<b>0.007</b>	<b>0.010</b>	<b>0.024</b>	<b>0.017</b>	<b>0.101</b>	<b>0.035</b>	<b>0.101</b>			

**Note:** Monthly maxima and averages for individual stations are not reported if data recovery is <75% (a maximum is recorded, however, if there has been an exceedence of a policy objective)

24-Hour Sulfur Dioxide			Policy Objective = 0.08 ppm												
Region	Station	24 Hour Average (ppm)	Jan	Feb	Mar	Apr	May	Jun	Jul	Aug	Sep	Oct	Nov	Dec	Annual
EAST	Alphington	Maximum	0.003		0.002		0.003	0.002							0.003
		Maximum	0.000	0.000	0.001	0.001	0.001	0.002	0.001	0.001	0.001	0.001	0.001	0.002	0.002
	<b>Region Summary</b>	<b>Maximum</b>	<b>0.003</b>	<b>0.000</b>	<b>0.002</b>	<b>0.002</b>	<b>0.003</b>	<b>0.002</b>	<b>0.001</b>	<b>0.001</b>	<b>0.001</b>	<b>0.001</b>	<b>0.001</b>	<b>0.002</b>	<b>0.003</b>
WEST	Altona North	Maximum	0.014	0.002	0.010	0.011	0.005	0.008	0.018	0.009	0.007	0.008	0.006	0.011	0.018
		Maximum	0.004	0.004	0.003	0.006	0.002	0.003	0.003	0.001	0.003	0.004	0.002		0.006
	<b>Region Summary</b>	<b>Maximum</b>	<b>0.014</b>	<b>0.004</b>	<b>0.010</b>	<b>0.011</b>	<b>0.005</b>	<b>0.008</b>	<b>0.018</b>	<b>0.009</b>	<b>0.007</b>	<b>0.008</b>	<b>0.006</b>	<b>0.011</b>	<b>0.018</b>
GEELONG	Geelong South	Maximum	0.002	0.002	0.003	0.005	0.004	0.006	0.004	0.003	0.003	0.003	0.004	0.005	0.006
	<b>Region Summary</b>	<b>Maximum</b>	<b>0.002</b>	<b>0.002</b>	<b>0.003</b>	<b>0.005</b>	<b>0.004</b>	<b>0.006</b>	<b>0.004</b>	<b>0.003</b>	<b>0.003</b>	<b>0.003</b>	<b>0.004</b>	<b>0.005</b>	<b>0.006</b>
LATROBE VALLEY	Morwell East	Maximum			0.001	0.001	0.001	0.001	0.002	0.002	0.003	0.004	0.005	0.007	0.007
		Maximum	0.011	0.004	0.003	0.004	0.004	0.004	0.004	0.002	0.004	0.005	0.004	0.015	0.015
	<b>Region Summary</b>	<b>Maximum</b>	<b>0.011</b>	<b>0.004</b>	<b>0.003</b>	<b>0.004</b>	<b>0.004</b>	<b>0.004</b>	<b>0.004</b>	<b>0.002</b>	<b>0.004</b>	<b>0.005</b>	<b>0.004</b>	<b>0.015</b>	<b>0.015</b>

