



# VICTORIA'S AIR QUALITY 2010 AIR MONITORING DATA

## **Section 1 - Report Card**

an assessment of compliance with the air quality goals and objectives

## **Section 2 - Trend analysis**

an update of the overall trends in air quality in Melbourne

## **Section 3 - Monthly Data Tables**

tabulated monthly air quality statistics

## Section 1- Report Card

### Compliance with Air Quality Objectives

Assessment of Victoria's air quality on a station-by-station basis

The numbers in the table indicate the number of days the objectives were not met.

Region	Station	Particles			Ozone		NO <sub>2</sub>		CO	SO <sub>2</sub>				
		Visibility	PM <sub>10</sub>	PM <sub>2.5</sub>	1 hr	4 hr	1 hr	24 hr	8hr	1 hr	24 hr	1 year		
M E L B O U R N E	City	Richmond	9	0				0	0	0				
	East	Alphington	15	0	3	0*	0*	0	0	0	0	0	0	0
		Box Hill	12	0		0	0	0	0	0	0	0	0	0
		Brighton	12	0		0*	0*	0	0					
		Dandenong	8	0		0	0	0	0					
		Mooroolbark	36	3		0	0	0	0	0				
	West	Altona North				0	0	0	0		0	0	0	0
		Brooklyn		32										
		Deer Park	7	1		0	0	0	0					
		Footscray	9	4	0	0	0	0	0	0	0	0	0	0
		Melton				0*	0*							
		Point Cook	6			0	0	0	0					
	GEELONG	Geelong South	3	1		0	0	0	0	0	0	0	0	0
Point Henry					0*	0*								
LATROBE VALLEY	Traralgon	25	3		0	0	0	0		0	0	0		

	Objective and Goal met		Exceeded the Objective, but met the Goal		Goal not Met	*	Insufficient data to demonstrate compliance
--	------------------------	--	--	--	--------------	---	---

\* Monitoring for this pollutant did not meet the 75% data capture target (ie. data capture in each quarter of the year)

On an annual basis, EPA assesses the air quality monitored at each station against the state and national air quality objectives and goals.

The numbers presented in the Table show the number of days that an air quality objective was not met.

Shading is used to indicate the assessment against the goals, with:

- *Green shading* indicating that the 2010 goal was met;
- *Red shading*, that the 2010 goal was not met; and
- *Yellow shading*, that whilst the 2010 goal was met, there were still days when the objective was not met

Monitoring instruments not meeting the data capture target are indicated by an asterisk and cells are not shaded yellow or green.

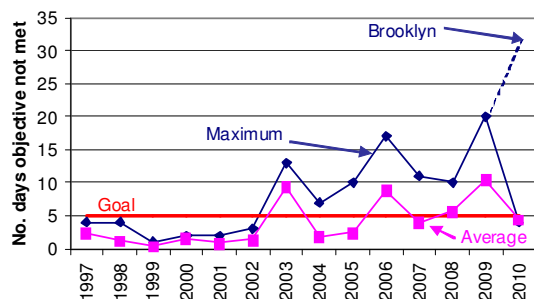
A blank cell indicates that monitoring for a particular pollutant was not performed at this station.

Note, for PM<sub>2.5</sub> there is no 2010 goal and monitoring occurs on a one-day-in-three basis.

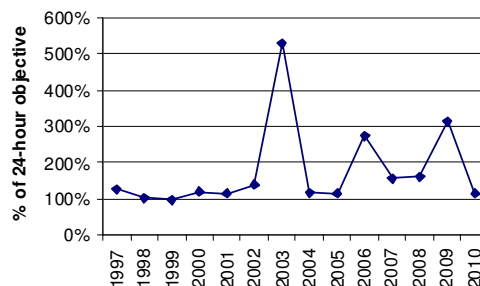
## Section 2 - Trend analysis

### Trends of air quality in Melbourne

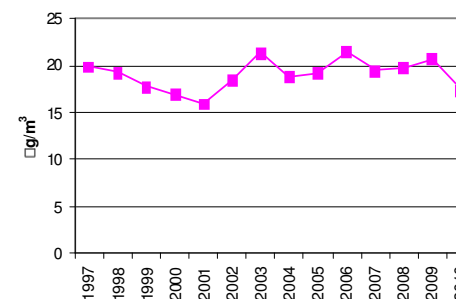
#### 1. Particles smaller than 10 µm (PM<sub>10</sub>)



(a) Days not meeting the PM<sub>10</sub> objective<sup>#</sup>

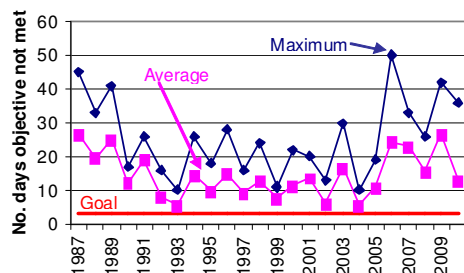


(b) Maximum 24-hour PM<sub>10</sub>

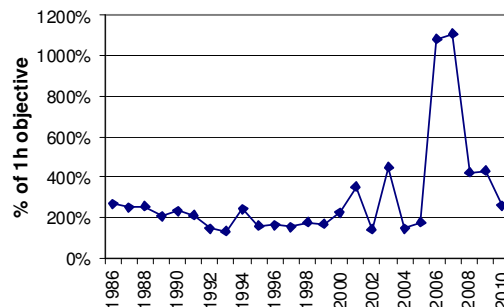


(c) Annual average PM<sub>10</sub>

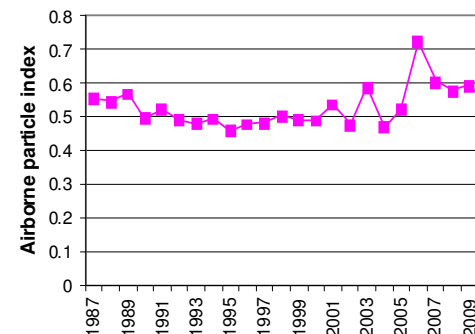
#### 2. Visibility measured as API



(a) Days not meeting the visibility objective



(b) Maximum 1-hour API



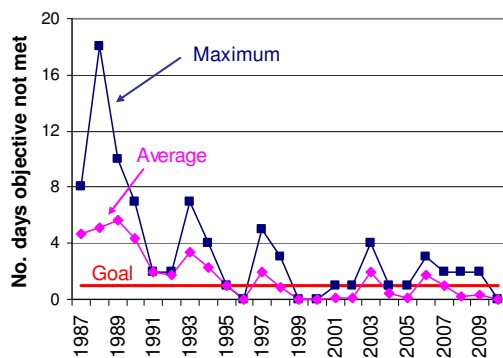
(c) Annual average API

A range of trend parameters for Melbourne are presented:

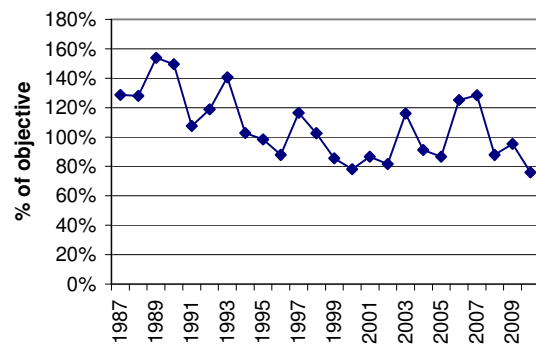
- Days not meeting the objective – Two values for this parameter are presented. The maximum number gives the value for the station recording the highest number of days not meeting the air quality objective each year (that is, the worst performing station that year). The average number (calculated by averaging the number of days at each station in Melbourne) is a better indicator for how Melbourne is performing overall rather than simply looking at an individual station.
  - Maximum pollutant levels – This looks at the highest pollutant levels recorded over the year. The value is calculated by averaging the maximum pollutant levels recorded at each monitoring station in Melbourne over any one year.
  - Average pollutant levels – In addition to the peak levels, we are also interested in the average pollutant level across Melbourne for the year. This is calculated by averaging levels from each station.
- # Brooklyn is not a long term trend station. It has been included to illustrate the local impact relative to the long term trend.

## Trends of air quality in Melbourne (continued)

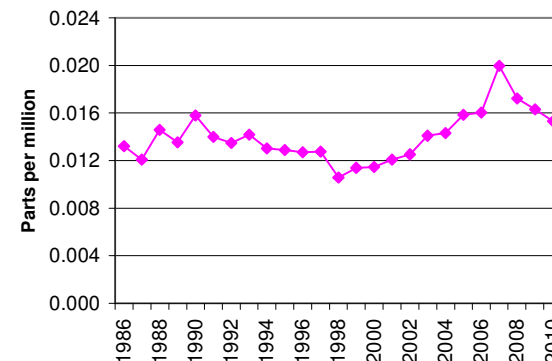
### 3. Ozone



(a) Days not meeting the four-hour ozone objective

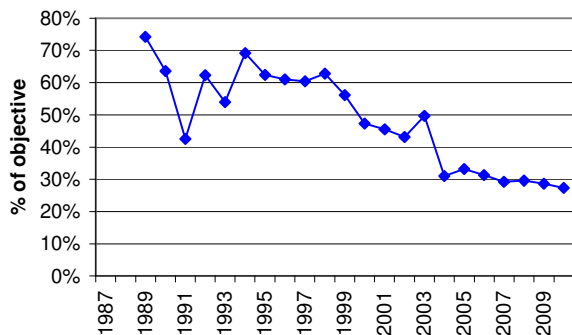


(b) Maximum four-hour ozone

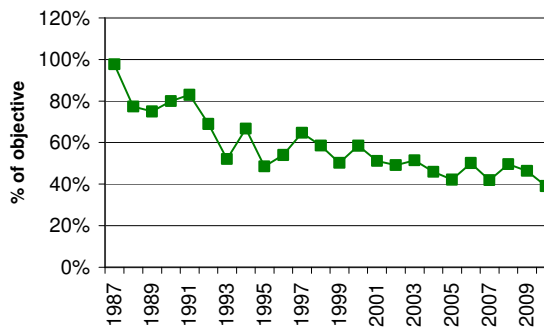


(c) Annual average ozone

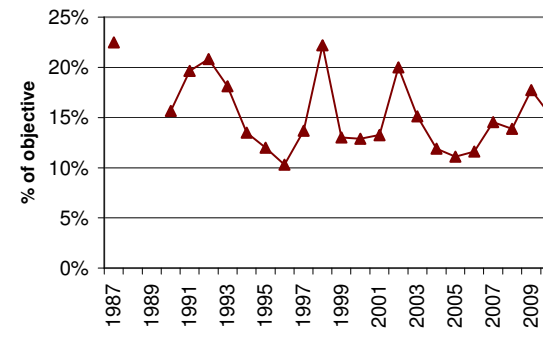
### 4. Other gases



(a) Maximum eight-hour CO



(b) Maximum one-hour NO<sub>2</sub>



(c) Maximum one-hour SO<sub>2</sub>

## Section 3- Monthly Data Tables



1-Hour Visibility (as API)		Policy Objective = 2.35														
Region	Station	1 Hour Average	Jan	Feb	Mar	Apr	May	Jun	Jul	Aug	Sep	Oct	Nov	Dec	Annual	
CITY	Richmond	Average	0.49	0.49	0.56	0.72	0.73	0.67	0.44	0.43	0.51	0.49	0.46	0.55		
		Data Recovery %	95	94	94	58	95	95	91	95	85	89	91	91	90	
		No. of Exceedences	0	0	1	0	3	4	1	0	0	0	0	0	9	
		Maximum	1.18	2.03	4.62	2.95	2.62	2.36	1.64	1.51	1.31	1.78	1.77	4.62		
Region Summary	Average	0.49	0.49	0.56	0.57	0.72	0.73	0.67	0.44	0.43	0.51	0.49	0.46	0.55		
	Data Recovery %	95	94	94	58	95	95	91	95	85	89	91	91	90		
	Maximum	1.18	2.03	4.62	1.58	2.95	2.62	2.36	1.64	1.51	1.31	1.78	1.77	4.62		
EAST	Alphington	Average	0.48	0.50	0.53	0.54	0.78	0.77	0.76	0.48	0.45	0.46	0.44	0.45	0.55	
		Data Recovery %	95	91	93	95	94	91	95	95	95	95	95	93	94	
		No. of Exceedences	0	0	1	1	5	3	5	0	0	0	0	0	15	
		Maximum	1.50	2.13	3.77	2.62	3.18	3.01	2.98	2.00	1.66	1.23	1.47	2.09	3.77	
	Box Hill	Average	0.49	0.31	0.45	0.54	0.65	0.75	0.69	0.45	0.42	0.42	0.39	0.40	0.50	
		Data Recovery %	95	96	95	95	95	95	95	95	96	95	95	94	95	
		No. of Exceedences	1	0	1	0	3	5	2	0	0	0	0	0	12	
		Maximum	4.14	0.78	2.45	1.75	2.91	2.78	2.79	1.85	1.31	1.13	1.21	1.46	4.14	
	Brighton	Average	0.52	0.55	0.55	0.49	0.68	0.72	0.61	0.43	0.41	0.47	0.42	0.44	0.53	
		Data Recovery %	96	95	95	82	94	95	95	95	95	95	95	96	94	
		No. of Exceedences	0	0	1	0	3	7	1	0	0	0	0	0	12	
		Maximum	1.29	2.10	6.24	2.07	2.87	3.52	2.55	1.55	1.35	1.24	1.65	1.61	6.24	
	Dandenong	Average	0.49	0.50	0.52	0.57	0.69	0.74	0.70	0.46	0.45	0.46	0.44	0.46	0.54	
		Data Recovery %	95	95	95	95	94	94	95	95	93	95	95	95	95	
		No. of Exceedences	0	0	0	0	3	3	2	0	0	0	0	0	8	
		Maximum	1.27	1.65	2.24	2.27	3.22	2.94	3.29	1.87	1.30	1.25	1.35	1.25	3.29	
	Mooroolbark	Average	0.58	0.56	0.65	0.78	0.94	0.95	0.89	0.59	0.52	0.48	0.48	0.48	0.66	
		Data Recovery %	94	95	95	95	95	95	95	95	95	95	95	95	95	
		No. of Exceedences	0	0	1	6	8	8	11	2	0	0	0	0	36	
		Maximum	1.88	2.20	2.55	4.00	4.17	4.45	4.11	2.81	1.98	1.44	2.01	1.48	4.45	
	Region Summary	Average	0.51	0.48	0.54	0.59	0.75	0.79	0.73	0.48	0.45	0.46	0.43	0.45	0.56	
		Data Recovery %	95	94	95	92	95	94	95	95	95	95	95	95	95	
		Maximum	4.14	2.20	6.24	4.00	4.17	4.45	4.11	2.81	1.98	1.44	2.01	2.09	6.24	
	WEST	Deer Park	Average	0.51	0.53	0.57	0.55	0.62	0.56	0.50	0.37	0.37	0.43	0.42	0.44	0.49
Data Recovery %			94	94	95	95	95	95	95	95	95	94	95	95	95	
No. of Exceedences			0	0	2	0	2	2	1	0	0	0	0	0	7	
Maximum			1.66	2.31	12.41	1.76	3.17	3.41	3.23	2.24	1.13	1.19	1.87	1.99	12.41	
Footscray		Average	0.49	0.53	0.55	0.52	0.67	0.65	0.57	0.42	0.43	0.49	0.46	0.46	0.52	
		Data Recovery %	95	95	94	94	95	95	95	95	95	95	95	94	95	
		No. of Exceedences	0	0	1	1	3	2	2	0	0	0	0	0	9	
		Maximum	1.56	2.05	8.32	2.46	8.00	2.69	3.02	1.55	1.10	1.56	1.94	1.86	8.32	
Point Cook		Average	0.46	0.48	0.52	0.49	0.58	0.53	0.49	0.36	0.36	0.44	0.41	0.42	0.46	
		Data Recovery %	81	92	90	95	93	94	95	95	95	92	95	92	92	
		No. of Exceedences	0	1	2	0	2	1	0	0	0	0	0	0	6	
		Maximum	1.12	3.15	7.63	1.91	2.96	3.00	2.24	1.32	1.00	1.47	1.61	1.19	7.63	
Region Summary		Average	0.49	0.51	0.55	0.52	0.62	0.58	0.52	0.39	0.39	0.45	0.43	0.44	0.49	
		Data Recovery %	90	94	93	95	94	95	95	95	95	94	95	94	94	
		Maximum	1.66	3.15	12.41	2.46	8.00	3.41	3.23	2.24	1.13	1.56	1.94	1.99	12.41	
GEELONG		Geelong South	Average	0.48	0.54	0.52	0.51	0.55	0.52	0.47	0.37	0.38	0.43	0.43	0.43	0.47
			Data Recovery %	96	95	95	95	95	94	95	95	88	95	95	95	94
			No. of Exceedences	0	0	1	0	1	0	1	0	0	0	0	0	3
			Maximum	1.20	2.09	2.71	1.94	2.41	2.18	2.72	1.26	0.94	1.46	2.22	1.88	2.72
Region Summary		Average	0.48	0.54	0.52	0.51	0.55	0.52	0.47	0.37	0.38	0.43	0.43	0.43	0.47	
		Data Recovery %	96	95	95	95	95	94	95	95	88	95	95	95	94	
		Maximum	1.20	2.09	2.71	1.94	2.41	2.18	2.72	1.26	0.94	1.46	2.22	1.88	2.72	
LATROBE VALLEY		Traralgon	Average	0.50	0.48	0.88	0.80	0.71	0.71	0.75	0.57	0.50	0.46	0.42	0.44	0.60
			Data Recovery %	96	95	96	96	96	96	96	96	96	95	96	96	96
	No. of Exceedences		0	0	6	5	4	5	3	2	0	0	0	0	25	
	Maximum		1.69	1.13	21.87	9.71	3.06	3.19	2.64	3.30	2.11	1.31	1.38	0.98	21.87	
Region Summary	Average	0.50	0.48	0.88	0.80	0.71	0.71	0.75	0.57	0.50	0.46	0.42	0.44	0.60		
	Data Recovery %	96	95	96	96	96	96	96	96	96	95	96	96	96		
	Maximum	1.69	1.13	21.87	9.71	3.06	3.19	2.64	3.30	2.11	1.31	1.38	0.98	21.87		

Note: Monthly maxima and averages for individual stations are not reported if data recovery is <75% (a maximum is recorded, however, if there has been an exceedence of a policy objective)



24-Hour PM <sub>10</sub> by TEOM			Policy Objective = 50 µg/m <sup>3</sup>												
Region	Station	24 Hour Average (µg/m <sup>3</sup> )	Jan	Feb	Mar	Apr	May	Jun	Jul	Aug	Sep	Oct	Nov	Dec	Annual
CITY	Richmond	Average	20.1	18.7	16.1	15.6	18.2	17.4	16.9	14.0	14.7	17.0	16.0	15.3	16.7
		Data Recovery%	100	100	100	87	100	100	94	100	90	97	100	100	97
		No. of Exceedences	0	0	0	0	0	0	0	0	0	0	0	0	0
		Maximum	36.3	30.4	27.5	24.6	34.3	46.6	27.9	29.2	33.2	26.8	29.8	30.1	46.6
Region Summary	Average	20.1	18.7	16.1	15.6	18.2	17.4	16.9	14.0	14.7	17.0	16.0	15.3	16.7	
	Data Recovery%	100	100	100	87	100	100	94	100	90	97	100	100	97	
	Maximum	0.0	0.0	0.0	0.0	0.0	0.0	0.0	0.0	0.0	0.0	0.0	0.0	0.0	
EAST	Alphington	Average	21.8	20.9	18.5	17.5	20.6	20.1	19.1	14.7	17.6	19.0	16.7	15.3	18.5
		Data Recovery%	100	96	97	100	100	93	100	94	100	100	97	97	98
		No. of Exceedences	0	0	0	0	0	0	0	0	0	0	0	0	0
		Maximum	44.1	33.4	31.3	28.7	36.5	47.7	34.5	32.3	41.5	26.7	32.0	30.8	47.7
	Box Hill	Average	19.8	18.3	16.0	14.3	16.5	16.0	15.2	11.9	13.4	14.4	13.5	13.7	15.2
		Data Recovery%	100	100	100	93	100	100	100	100	100	100	100	97	99
		No. of Exceedences	0	0	0	0	0	0	0	0	0	0	0	0	0
		Maximum	37.5	29.3	31.3	26.5	33.8	37.1	30.5	21.3	31.8	25.2	23.5	32.3	37.5
	Brighton	Average	19.9	17.6	18.0	16.9	18.1			14.3	14.9	16.4	14.1	15.8	16.7
		Data Recovery%	100	100	100	100	100	43	55	100	100	100	100	100	92
		No. of Exceedences	0	0	0	0	0	0	0	0	0	0	0	0	0
		Maximum	36.1	34.3	33.0	29.3	41.0			25.9	35.2	26.1	25.9	32.0	41.0
	Dandenong	Average	21.3	19.9	19.3	16.0	17.8	18.3	16.4	14.2	14.5	16.1	15.4	17.0	17.2
		Data Recovery%	100	100	100	100	97	100	94	100	97	100	97	100	99
		No. of Exceedences	0	0	0	0	0	0	0	0	0	0	0	0	0
		Maximum	39.3	34.2	37.3	33.7	39.1	43.7	38.1	34.1	30.4	28.4	36.2	34.9	43.7
	Mooroolbark	Average		21.2	21.1	20.5	25.9	23.0	24.3	15.5	15.0	15.4	15.7	16.2	19.7
		Data Recovery%	65	93	100	100	84	100	100	97	90	100	100	100	94
		No. of Exceedences	0	0	0	0	2	0	1	0	0	0	0	0	3
		Maximum		35.4	46.9	41.3	51.9	46.4	53.8	26.8	32.5	29.3	34.4	35.1	53.8
	Region Summary	Average	21.2	19.6	18.6	17.1	19.6	19.4	18.6	14.1	15.1	16.3	15.0	15.6	17.5
		Data Recovery%	93	98	99	99	96	87	90	98	97	100	99	99	96
		Maximum	44.1	35.4	46.9	41.3	51.9	47.7	53.8	34.1	41.5	29.3	36.2	35.1	53.8
WEST	Brooklyn	Average	28.1	30.6	26.9	25.1	28.5	34.1	30.9	24.7	21.8	27.0	22.5	20.8	26.7
		Data Recovery%	90	100	100	100	81	100	100	100	100	100	100	100	98
		No. of Exceedences	3	2	3	2	6	4	5	1	1	1	3	1	32
		Maximum	94.9	70.5	61.5	55.4	66.7	115.3	66.0	54.3	59.2	64.2	61.6	83.1	115.3
	Deer Park	Average	24.3	22.8	18.9	15.4	15.8	15.0	12.9	10.8	13.0	15.2	14.8	16.3	16.1
		Data Recovery%	90	93	100	100	100	100	100	100	100	100	100	100	99
		No. of Exceedences	1	0	0	0	0	0	0	0	0	0	0	0	1
		Maximum	53.0	39.2	40.4	27.5	35.1	48.2	32.9	20.8	31.1	28.3	28.7	37.2	53.0
	Footscray	Average	22.0	22.5	21.0	17.3	21.0	20.8	18.6	14.4	19.7	17.3	16.6	17.6	19.1
		Data Recovery%	100	100	97	100	100	100	100	94	100	100	100	100	99
		No. of Exceedences	1	1	0	0	0	1	0	0	1	0	0	0	4
		Maximum	74.7	58.1	39.5	28.8	38.1	74.8	40.4	28.9	55.3	31.6	33.7	37.4	74.8
Region Summary	Average	24.7	25.4	22.3	19.3	21.3	23.3	20.8	16.7	18.2	19.8	18.0	18.2	20.6	
	Data Recovery%	94	98	99	100	94	100	100	98	100	100	100	100	98	
	Maximum	94.9	70.5	61.5	55.4	66.7	115.3	66.0	54.3	59.2	64.2	61.6	83.1	115.3	
GEELONG	Geelong South	Average	21.5	22.1	20.6	16.6	17.0	17.8	16.2	15.3	16.4	18.8	17.2	19.2	18.2
		Data Recovery%	100	100	94	100	100	100	100	100	100	100	100	100	99
		No. of Exceedences	0	0	0	0	0	0	0	0	0	0	1	0	1
		Maximum	47.9	37.9	42.6	31.5	32.2	45.1	31.0	32.4	39.2	43.9	50.4	49.5	50.4
Region Summary	Average	21.5	22.1	20.6	16.6	17.0	17.8	16.2	15.3	16.4	18.8	17.2	19.2	18.2	
	Data Recovery%	100	100	94	100	100	100	100	100	100	100	100	100	99	
	Maximum	0.0	0.0	0.0	0.0	0.0	0.0	0.0	0.0	0.0	0.0	1.0	0.0	1.0	
LATROBE VALLEY	Traralgon	Average	21.1	17.0	21.2	16.6	16.2	17.4	16.8	14.9	14.9	14.8	14.5	15.7	16.8
		Data Recovery%	100	100	100	100	100	100	100	100	100	100	100	100	100
		No. of Exceedences	0	0	2	1	0	0	0	0	0	0	0	0	3
		Maximum	41.7	27.1	77.6	51.3	30.9	28.7	29.6	24.5	30.8	23.7	27.7	29.9	77.6
Region Summary	Average	21.1	17.0	21.2	16.6	16.2	17.4	16.8	14.9	14.9	14.8	14.5	15.7	16.8	
	Data Recovery%	100	100	100	100	100	100	100	100	100	100	100	100	100	
	Maximum	0.0	0.0	2.0	1.0	0.0	0.0	0.0	0.0	0.0	0.0	0.0	0.0	2.0	

Note: Monthly maxima and averages for individual stations are not reported if data recovery is <75% (a maximum is recorded, however, if there has been an exceedence of a policy objective)



24-Hour PM <sub>10</sub> by HiVol			Policy Objective = 50 µg/m <sup>3</sup>													
Region	Station	24 Hour Average (µg/m <sup>3</sup> )	Jan	Feb	Mar	Apr	May	Jun	Jul	Aug	Sep	Oct	Nov	Dec	Annual	
EAST	Alphington	Average	20.6	16.0	17.7	16.4	21.2	17.0	12.6	13.4	11.4	12.4	9.8	9.8	14.9	
		Data Recovery %	100	100	100	100	100	100	100	100	100	100	100	100	100	100
		No. of Exceedences														0
		Maximum	35.0	21.0	25.0	24.0	34.0	34.0	20.0	29.0	18.0	16.0	15.0	14.0	35.0	
WEST	Footscray	Average				17.8	22.8	15.4							18.2	
		Data Recovery %				100	100	100	40						28	
		No. of Exceedences													0	
		Maximum				24.0	32.0	29.0							32.0	

- Note:** (1) HiVols are operated on a one day in six basis.  
(2) Data recovery is based on the number of valid days  
(3) Monthly maxima and averages for individual stations are not reported if data recovery is <75% (a maximum is recorded, however, if there has been an exceedence a policy objective)

24-Hour PM <sub>2.5</sub> by TEOM															
Region	Station	24 Hour Average (0g/m <sup>3</sup> )	Jan	Feb	Mar	Apr	May	Jun	Jul	Aug	Sep	Oct	Nov	Dec	Annual
EAST	Alphington	Average	4.8	4.6	5.0	5.2	7.3	6.3	6.3	3.5	3.7	4.3	3.7	3.8	4.9
		Data Recovery %	100	96	97	100	100	93	100	94	100	100	100	97	98
		No. of Exceedences	0	0	0	0	0	0	0	0	0	0	0	0	0
		Maximum	8.2	10.4	12.3	12.7	17.3	17.0	15.4	15.2	10.2	9.4	8.7	9.4	17.3
WEST	Footscray	Average	4.9	4.7	5.5	4.8	6.1	5.4	4.5	2.8	3.4	4.0	3.2	4.3	4.5
		Data Recovery %	100	96	97	100	94	100	100	100	100	100	100	100	99
		No. of Exceedences	0	0	0	0	0	0	0	0	0	0	0	0	0
		Maximum	10.1	9.7	22.9	12.1	16.5	21.1	13.5	11.2	9.7	10.5	9.4	9.9	22.9

24-Hour PM <sub>2.5</sub> by Partisol			Advisory Reporting Standard = 25 µg/m <sup>3</sup>												
Region	Station	24 Hour Average (0g/m <sup>3</sup> )	Jan	Feb	Mar	Apr	May	Jun	Jul	Aug	Sep	Oct	Nov	Dec	Annual
EAST	Alphington	Average	6.7	6.4	7.5	7.3	10.6	10.5	10.5	6.9	4.9	5.5	5.6	5.0	7.3
		Data Recovery %	100	100	100	100	100	100	100	100	100	100	100	100	100
		No. of Exceedences	0	0	0	0	1	0	1	1	0	0	0	0	3
		Maximum	8.8	9.1	13.8	12.5	27.0	17.3	25.5	26.5	9.8	8.8	9.7	10.4	27.0
WEST	Footscray	Average	7.3	7.5		7.2	8.5	7.8	7.5	5.6	4.4	5.6	6.1	5.5	6.8
		Data Recovery %	100	100	55	100	100	100	100	100	100	100	100	100	96
		No. of Exceedences	0	0	0	0	0	0	0	0	0	0	0	0	0
		Maximum	11.8	10.2		13.1	20.3	15.4	16.3	19.7	9.3	8.5	11.9	11.6	24.5

- Note:** (1) Partisols are operated on a one day in three basis.  
(2) Data recovery is based on the number of valid days  
(3) Monthly maxima and averages for individual stations are not reported if data recovery is <75% (a maximum is recorded, however, if there has been an exceedence of a policy objective)





1-Hour Ozone			Policy Objective = 0.10 ppm													
Region	Station	1 Hour Average (ppm)	Jan	Feb	Mar	Apr	May	Jun	Jul	Aug	Sep	Oct	Nov	Dec	Annual	
EAST	Alphington	Average	0.014	0.015	0.014	0.012	0.007	0.008	0.007			0.016	0.015	0.011	0.012	
		Data Recovery %	95	91	92	95	94	91	95	92	30	67	79	95	93	85
		Maximum	0.048	0.061	0.041	0.035	0.029	0.024	0.025				0.035	0.038	0.044	0.061
	Box Hill	Average	0.019	0.020	0.019	0.016	0.008	0.009	0.008	0.014	0.016	0.018	0.016	0.015	0.015	0.015
		Data Recovery %	95	96	95	95	95	95	95	95	95	86	94	94	94	94
		Maximum	0.058	0.077	0.051	0.041	0.029	0.022	0.023	0.028	0.033	0.037	0.039	0.049	0.049	0.077
	Brighton	Average	0.018	0.018	0.017	0.016	0.011	0.012					0.019	0.019	0.015	0.016
		Data Recovery %	86	95	95	95	95	95	66	0	8	95	95	95	77	
		Maximum	0.055	0.060	0.043	0.038	0.032	0.026				0.050	0.048	0.053	0.060	
	Dandenong	Average	0.018	0.018	0.017	0.015	0.011	0.011	0.011	0.010	0.016	0.019	0.020	0.019	0.016	0.016
		Data Recovery %	94	95	95	95	94	94	95	81	92	95	95	95	93	
		Maximum	0.059	0.077	0.053	0.039	0.033	0.028	0.029	0.035	0.038	0.047	0.050	0.055	0.077	
Mooroolbark	Average	0.020	0.019	0.017	0.013	0.009	0.009	0.011	0.013	0.014	0.018	0.016	0.014	0.014		
	Data Recovery %	93	95	80	95	95	95	95	95	94	76	95	95	92		
	Maximum	0.066	0.062	0.056	0.035	0.031	0.026	0.028	0.031	0.034	0.035	0.041	0.048	0.066		
<b>Region Summary</b>	<b>Average</b>	<b>0.018</b>	<b>0.018</b>	<b>0.017</b>	<b>0.014</b>	<b>0.009</b>	<b>0.010</b>	<b>0.009</b>	<b>0.014</b>	<b>0.016</b>	<b>0.018</b>	<b>0.017</b>	<b>0.014</b>	<b>0.015</b>		
	<b>Data Recovery %</b>	<b>93</b>	<b>94</b>	<b>91</b>	<b>95</b>	<b>95</b>	<b>94</b>	<b>89</b>	<b>60</b>	<b>71</b>	<b>86</b>	<b>95</b>	<b>95</b>	<b>88</b>		
	<b>Maximum</b>	<b>0.066</b>	<b>0.077</b>	<b>0.056</b>	<b>0.041</b>	<b>0.033</b>	<b>0.028</b>	<b>0.029</b>	<b>0.035</b>	<b>0.038</b>	<b>0.050</b>	<b>0.050</b>	<b>0.055</b>	<b>0.077</b>		
WEST	Altona North	Average	0.019		0.016	0.014	0.009	0.010	0.015	0.018	0.018	0.018	0.016	0.015		
		Data Recovery %	91	74	93	93	87	94	62	90	90	89	94	93	88	
		Maximum	0.060		0.045	0.038	0.027	0.027	0.031	0.033	0.039	0.050	0.052	0.064		
	Deer Park	Average	0.017	0.017	0.017	0.015	0.011	0.015	0.013	0.019	0.019	0.021	0.019	0.017	0.017	
		Data Recovery %	94	94	95	95	82	95	94	95	94	95	94	95	94	
		Maximum	0.063	0.071	0.048	0.038	0.032	0.032	0.030	0.033	0.035	0.043	0.051	0.059	0.071	
	Footscray	Average	0.017	0.015	0.015	0.013	0.009	0.010	0.009	0.016	0.017	0.020	0.018	0.014	0.015	
		Data Recovery %	95	94	94	94	95	94	95	95	94	95	95	94	95	
		Maximum	0.063	0.068	0.043	0.040	0.030	0.028	0.030	0.032	0.035	0.041	0.040	0.049	0.068	
	Melton	Average	0.018	0.018	0.017	0.018	0.014	0.015	0.013	0.021	0.020	0.021		0.015	0.017	
		Data Recovery %	95	95	95	94	95	96	86	78	94	78	49	86	87	
		Maximum	0.059	0.062	0.045	0.039	0.031	0.028	0.028	0.033	0.033	0.042		0.045	0.062	
Point Cook	Average	0.013	0.017	0.020	0.018	0.014	0.014	0.013	0.018	0.021	0.021	0.016	0.017	0.017		
	Data Recovery %	80	92	89	94	93	94	95	95	95	91	94	92	92		
	Maximum	0.053	0.052	0.058	0.039	0.030	0.030	0.029	0.032	0.033	0.052	0.043	0.045	0.058		
<b>Region Summary</b>	<b>Average</b>	<b>0.017</b>	<b>0.018</b>	<b>0.017</b>	<b>0.015</b>	<b>0.012</b>	<b>0.013</b>	<b>0.011</b>	<b>0.018</b>	<b>0.019</b>	<b>0.020</b>	<b>0.018</b>	<b>0.016</b>	<b>0.016</b>		
	<b>Data Recovery %</b>	<b>91</b>	<b>90</b>	<b>93</b>	<b>94</b>	<b>90</b>	<b>95</b>	<b>87</b>	<b>91</b>	<b>94</b>	<b>90</b>	<b>85</b>	<b>92</b>	<b>91</b>		
	<b>Maximum</b>	<b>0.063</b>	<b>0.071</b>	<b>0.058</b>	<b>0.040</b>	<b>0.032</b>	<b>0.032</b>	<b>0.030</b>	<b>0.033</b>	<b>0.035</b>	<b>0.052</b>	<b>0.051</b>	<b>0.059</b>	<b>0.071</b>		
GEELONG	Geelong South	Average	0.017	0.017	0.017	0.016	0.013	0.014	0.014	0.020		0.024	0.020	0.016	0.017	
		Data Recovery %	95	93	95	95	95	94	94	55		95	95	94	91	
		Maximum	0.084	0.059	0.049	0.040	0.028	0.028	0.037			0.048	0.056	0.047	0.084	
	Point Henry	Average	0.017	0.018	0.018	0.018	0.014	0.015	0.013		0.022	0.022			0.017	
Data Recovery %		95	96	96	89	87	95	78	43	96	96	28	51	79		
Maximum		0.077	0.075	0.054	0.045	0.028	0.029	0.029		0.033	0.046			0.077		
<b>Region Summary</b>	<b>Average</b>	<b>0.017</b>	<b>0.018</b>	<b>0.018</b>	<b>0.017</b>	<b>0.013</b>	<b>0.014</b>	<b>0.014</b>	<b>0.019</b>	<b>0.022</b>	<b>0.023</b>	<b>0.020</b>	<b>0.014</b>	<b>0.017</b>		
	<b>Data Recovery %</b>	<b>95</b>	<b>95</b>	<b>95</b>	<b>92</b>	<b>91</b>	<b>95</b>	<b>86</b>	<b>69</b>	<b>75</b>	<b>95</b>	<b>62</b>	<b>73</b>	<b>85</b>		
	<b>Maximum</b>	<b>0.084</b>	<b>0.075</b>	<b>0.054</b>	<b>0.045</b>	<b>0.028</b>	<b>0.029</b>	<b>0.029</b>	<b>0.037</b>	<b>0.033</b>	<b>0.048</b>	<b>0.056</b>	<b>0.047</b>	<b>0.084</b>		
LATROBE VALLEY	Traralgon	Average	0.014	0.012	0.015	0.012	0.010	0.011	0.009	0.015	0.018	0.017	0.017	0.015	0.014	
		Data Recovery %	96	95	95	95	96	96	95	95	95	95	95	96	95	
	<b>Region Summary</b>	<b>Average</b>	<b>0.014</b>	<b>0.012</b>	<b>0.015</b>	<b>0.012</b>	<b>0.010</b>	<b>0.011</b>	<b>0.009</b>	<b>0.015</b>	<b>0.018</b>	<b>0.017</b>	<b>0.017</b>	<b>0.015</b>	<b>0.014</b>	
	<b>Data Recovery %</b>	<b>96</b>	<b>95</b>	<b>95</b>	<b>95</b>	<b>96</b>	<b>96</b>	<b>95</b>	<b>95</b>	<b>95</b>	<b>95</b>	<b>95</b>	<b>96</b>	<b>95</b>		
	<b>Maximum</b>	<b>0.055</b>	<b>0.051</b>	<b>0.057</b>	<b>0.038</b>	<b>0.026</b>	<b>0.027</b>	<b>0.026</b>	<b>0.030</b>	<b>0.035</b>	<b>0.038</b>	<b>0.044</b>	<b>0.041</b>	<b>0.057</b>		

Note: Monthly maxima and averages for individual stations are not reported if data recovery is < 75% (a maximum is recorded, however, if there has been an exceedance of a policy objective)



4-Hour Ozone			Policy Objective = 0.08 ppm												
Region	Station	4 Hour Average (ppm)	Jan	Feb	Mar	Apr	May	Jun	Jul	Aug	Sep	Oct	Nov	Dec	Annual
EAST	Alphington	Maximum No. of Exceedences	0.045	0.057	0.039	0.034	0.028	0.023	0.024			0.033	0.037	0.037	0.057 0
	Box Hill	Maximum No. of Exceedences	0.054	0.067	0.049	0.039	0.029	0.021	0.022	0.027	0.031	0.035	0.037	0.044	0.067 0
	Brighton	Maximum No. of Exceedences	0.055	0.055	0.040	0.035	0.032	0.025				0.048	0.045	0.046	0.055 0
	Dandenong	Maximum No. of Exceedences	0.055	0.071	0.047	0.037	0.033	0.028	0.028	0.034	0.036	0.045	0.048	0.049	0.071 0
	Mooroolbark	Maximum No. of Exceedences	0.062	0.060	0.047	0.033	0.031	0.025	0.027	0.031	0.031	0.035	0.038	0.043	0.062 0
	<b>Region Summary</b>	<b>Maximum</b>	<b>0.062</b>	<b>0.071</b>	<b>0.049</b>	<b>0.039</b>	<b>0.033</b>	<b>0.028</b>	<b>0.028</b>	<b>0.034</b>	<b>0.036</b>	<b>0.048</b>	<b>0.048</b>	<b>0.049</b>	<b>0.071</b>
WEST	Altona North	Maximum No. of Exceedences	0.056		0.041	0.037	0.025	0.027		0.031	0.032	0.036	0.041	0.048	0.060 0
	Deer Park	Maximum No. of Exceedences	0.058	0.063	0.043	0.038	0.031	0.031	0.029	0.033	0.033	0.042	0.043	0.051	0.063 0
	Footscray	Maximum No. of Exceedences	0.059	0.061	0.041	0.039	0.030	0.027	0.029	0.031	0.034	0.041	0.039	0.044	0.061 0
	Melton	Maximum No. of Exceedences	0.056	0.058	0.041	0.038	0.030	0.027	0.027	0.032	0.032	0.039		0.043	0.058 0
	Point Cook	Maximum No. of Exceedences	0.044	0.046	0.054	0.038	0.028	0.029	0.028	0.032	0.032	0.048	0.037	0.043	0.054 0
	<b>Region Summary</b>	<b>Maximum</b>	<b>0.059</b>	<b>0.063</b>	<b>0.054</b>	<b>0.039</b>	<b>0.031</b>	<b>0.031</b>	<b>0.029</b>	<b>0.033</b>	<b>0.034</b>	<b>0.048</b>	<b>0.043</b>	<b>0.051</b>	<b>0.063</b>
GEELONG	Geelong South	Maximum No. of Exceedences	0.067	0.049	0.045	0.039	0.028	0.027	0.028	0.031		0.047	0.050	0.043	0.067 0
	Point Henry	Maximum No. of Exceedences	0.067	0.053	0.051	0.044	0.028	0.029	0.028		0.032	0.044			0.067 0
	<b>Region Summary</b>	<b>Maximum</b>	<b>0.067</b>	<b>0.053</b>	<b>0.051</b>	<b>0.044</b>	<b>0.028</b>	<b>0.029</b>	<b>0.028</b>	<b>0.031</b>	<b>0.032</b>	<b>0.047</b>	<b>0.050</b>	<b>0.043</b>	<b>0.067</b>
LATROBE VALLEY	Traralgon	Maximum No. of Exceedences	0.045	0.043	0.047	0.034	0.025	0.026	0.026	0.029	0.031	0.034	0.040	0.037	0.047 0
	<b>Region Summary</b>	<b>Maximum</b>	<b>0.045</b>	<b>0.043</b>	<b>0.047</b>	<b>0.034</b>	<b>0.025</b>	<b>0.026</b>	<b>0.026</b>	<b>0.029</b>	<b>0.031</b>	<b>0.034</b>	<b>0.040</b>	<b>0.037</b>	<b>0.047</b>

**Note:** Monthly maxima and averages for individual stations are not reported if data recovery is <75% (a maximum is recorded, however, if there has been an exceedence of a policy objective)

<b>8-Hour Carbon Monoxide</b>		<b>Policy Objective = 9.0 ppm</b>													
<b>Region</b>	<b>Station</b>	<b>8 Hour Average (ppm)</b>	<b>Jan</b>	<b>Feb</b>	<b>Mar</b>	<b>Apr</b>	<b>May</b>	<b>Jun</b>	<b>Jul</b>	<b>Aug</b>	<b>Sep</b>	<b>Oct</b>	<b>Nov</b>	<b>Dec</b>	<b>Annual</b>
<b>CITY</b>	Richmond	Average	0.3	0.4	0.4	0.4	0.6	0.6	0.6	0.4		0.3	0.3	0.3	0.4
		Data Recovery %	95	94	94	88	95	95	94	95	71	92	95	89	92
		Maximum	0.7	1.4	0.8	1.5	3.2	3.0	1.9	1.3		0.9	0.6	0.7	3.2
	<b>Region Summary</b>	<b>Average</b>	<b>0.3</b>	<b>0.4</b>	<b>0.4</b>	<b>0.4</b>	<b>0.6</b>	<b>0.6</b>	<b>0.6</b>	<b>0.4</b>	<b>0.3</b>	<b>0.3</b>	<b>0.3</b>	<b>0.3</b>	<b>0.3</b>
	<b>Data Recovery %</b>	<b>95</b>	<b>94</b>	<b>94</b>	<b>88</b>	<b>95</b>	<b>95</b>	<b>94</b>	<b>95</b>	<b>71</b>	<b>92</b>	<b>95</b>	<b>89</b>	<b>92</b>	
	<b>Maximum</b>	<b>0.7</b>	<b>1.4</b>	<b>0.8</b>	<b>1.5</b>	<b>3.2</b>	<b>3.0</b>	<b>1.9</b>	<b>1.3</b>	<b>0.9</b>	<b>0.9</b>	<b>0.6</b>	<b>0.7</b>	<b>3.2</b>	
<b>EAST</b>	Alphington	Average	0.0	0.0	0.1	0.1	0.4	0.4	0.5	0.1	0.1	0.1	0.0	0.0	0.1
		Data Recovery %	95	90	92	94	93	91	94	94	93	94	95	92	93
		Maximum	0.2	0.2	0.4	1.1	2.8	2.7	2.4	1.9	1.0	0.7	0.2	0.2	2.8
	Box Hill	Average	0.1	0.2	0.2	0.2	0.4	0.4	0.5	0.2	0.2	0.2	0.2	0.2	0.3
		Data Recovery %	95	96	95	95	95	95	95	95	94	94	95	93	95
		Maximum	0.4	0.5	0.5	1.2	2.2	2.4	1.6	1.1	0.9	0.7	0.7	0.9	2.4
	Mooroolbark	Average	0.1	0.2	0.2	0.3	0.5	0.5	0.6	0.3	0.2	0.2	0.2	0.2	0.3
		Data Recovery %	90	94	95	95	95	95	95	89	87	95	95	95	93
Maximum		0.4	0.6	0.6	1.1	1.9	1.6	2.2	1.7	1.1	0.6	0.6	0.5	2.2	
<b>Region Summary</b>	<b>Average</b>	<b>0.1</b>	<b>0.1</b>	<b>0.2</b>	<b>0.2</b>	<b>0.5</b>	<b>0.4</b>	<b>0.5</b>	<b>0.2</b>	<b>0.2</b>	<b>0.2</b>	<b>0.1</b>	<b>0.1</b>	<b>0.2</b>	
	<b>Data Recovery %</b>	<b>93</b>	<b>93</b>	<b>94</b>	<b>95</b>	<b>95</b>	<b>94</b>	<b>95</b>	<b>92</b>	<b>92</b>	<b>94</b>	<b>95</b>	<b>94</b>	<b>94</b>	
	<b>Maximum</b>	<b>0.4</b>	<b>0.6</b>	<b>0.6</b>	<b>1.2</b>	<b>2.8</b>	<b>2.7</b>	<b>2.4</b>	<b>1.9</b>	<b>1.1</b>	<b>0.7</b>	<b>0.7</b>	<b>0.9</b>	<b>2.8</b>	
<b>WEST</b>	Footscray	Average	0.1	0.2	0.2	0.2	0.4	0.3	0.3	0.2	0.2	0.2	0.2	0.1	0.2
		Data Recovery %	94	91	94	94	95	94	95	95	94	95	95	95	94
		Maximum	0.5	1.6	0.7	1.0	1.3	1.7	1.4	1.0	0.7	0.6	0.5	0.8	1.7
	<b>Region Summary</b>	<b>Average</b>	<b>0.1</b>	<b>0.2</b>	<b>0.2</b>	<b>0.2</b>	<b>0.4</b>	<b>0.3</b>	<b>0.3</b>	<b>0.2</b>	<b>0.2</b>	<b>0.2</b>	<b>0.2</b>	<b>0.1</b>	<b>0.2</b>
	<b>Data Recovery %</b>	<b>94</b>	<b>91</b>	<b>94</b>	<b>94</b>	<b>95</b>	<b>94</b>	<b>95</b>	<b>95</b>	<b>94</b>	<b>95</b>	<b>95</b>	<b>95</b>	<b>94</b>	
	<b>Maximum</b>	<b>0.5</b>	<b>1.6</b>	<b>0.7</b>	<b>1.0</b>	<b>1.3</b>	<b>1.7</b>	<b>1.4</b>	<b>1.0</b>	<b>0.7</b>	<b>0.6</b>	<b>0.5</b>	<b>0.8</b>	<b>1.7</b>	
<b>GEELONG</b>	Geelong South	Average	0.1	0.2	0.2	0.2	0.3	0.3	0.3	0.2	0.2	0.2	0.2	0.2	0.2
		Data Recovery %	95	94	95	95	95	95	94	95	93	95	95	95	95
		Maximum	0.4	0.5	0.8	0.6	1.3	1.8	0.8	0.8	0.6	0.5	0.5	0.7	1.8
	<b>Region Summary</b>	<b>Average</b>	<b>0.1</b>	<b>0.2</b>	<b>0.2</b>	<b>0.2</b>	<b>0.3</b>	<b>0.3</b>	<b>0.3</b>	<b>0.2</b>	<b>0.2</b>	<b>0.2</b>	<b>0.2</b>	<b>0.2</b>	<b>0.2</b>
	<b>Data Recovery %</b>	<b>95</b>	<b>94</b>	<b>95</b>	<b>95</b>	<b>95</b>	<b>95</b>	<b>94</b>	<b>95</b>	<b>93</b>	<b>95</b>	<b>95</b>	<b>95</b>	<b>95</b>	
	<b>Maximum</b>	<b>0.4</b>	<b>0.5</b>	<b>0.8</b>	<b>0.6</b>	<b>1.3</b>	<b>1.8</b>	<b>0.8</b>	<b>0.8</b>	<b>0.6</b>	<b>0.5</b>	<b>0.5</b>	<b>0.7</b>	<b>1.8</b>	

**Note:** Monthly maxima and averages for individual stations are not reported if data recovery is <75% (a maximum is recorded, however, if there has been an exceedence of a policy objective)

1-Hour Nitrogen Dioxide			Policy Objective = 0.12 ppm												
Region	Station	1 Hour Average (ppm)	Jan	Feb	Mar	Apr	May	Jun	Jul	Aug	Sep	Oct	Nov	Dec	Annual
CITY	Richmond	Average	0.007	0.010	0.011	0.011	0.014	0.014	0.016	0.012	0.011	0.012	0.009	0.008	0.011
		Data Recovery %	95	94	94	88	95	95	94	95	88	92	95	95	93
		Maximum	0.042	0.036	0.045	0.061	0.051	0.046	0.051	0.040	0.029	0.044	0.032	0.022	0.061
	<b>Region Summary</b>	<b>Average</b>	<b>0.007</b>	<b>0.010</b>	<b>0.011</b>	<b>0.011</b>	<b>0.014</b>	<b>0.014</b>	<b>0.016</b>	<b>0.012</b>	<b>0.011</b>	<b>0.012</b>	<b>0.009</b>	<b>0.008</b>	<b>0.011</b>
	<b>Data Recovery %</b>	<b>95</b>	<b>94</b>	<b>94</b>	<b>88</b>	<b>95</b>	<b>95</b>	<b>94</b>	<b>95</b>	<b>88</b>	<b>92</b>	<b>95</b>	<b>95</b>	<b>93</b>	
	<b>Maximum</b>	<b>0.042</b>	<b>0.036</b>	<b>0.045</b>	<b>0.061</b>	<b>0.051</b>	<b>0.046</b>	<b>0.051</b>	<b>0.040</b>	<b>0.029</b>	<b>0.044</b>	<b>0.032</b>	<b>0.022</b>	<b>0.061</b>	
EAST	Alphington	Average	0.005	0.007	0.008	0.008	0.011	0.012	0.012	0.009	0.009	0.010	0.008	0.007	0.009
		Data Recovery %	95	91	93	95	94	92	95	94	94	95	95	93	94
		Maximum	0.038	0.029	0.033	0.035	0.038	0.037	0.034	0.030	0.030	0.031	0.031	0.029	0.038
	Box Hill	Average	0.005	0.006	0.008	0.009	0.011	0.011	0.012	0.009	0.008	0.007	0.006	0.005	0.008
		Data Recovery %	95	96	95	95	95	95	95	95	95	95	86	95	94
		Maximum	0.034	0.023	0.030	0.034	0.038	0.032	0.043	0.029	0.030	0.026	0.033	0.021	0.043
	Brighton	Average	0.005	0.005	0.008	0.008	0.012	0.012	0.013	0.008	0.006	0.007	0.005	0.006	0.008
		Data Recovery %	95	95	95	95	95	95	95	94	95	95	95	95	95
		Maximum	0.031	0.028	0.039	0.039	0.037	0.045	0.036	0.032	0.026	0.029	0.023	0.024	0.045
	Dandenong	Average	0.007	0.009	0.011	0.013	0.014	0.015	0.016	0.012	0.011	0.010	0.009	0.008	0.011
		Data Recovery %	94	95	95	95	89	94	95	95	92	95	95	95	94
		Maximum	0.035	0.035	0.045	0.042	0.038	0.045	0.039	0.035	0.034	0.049	0.031	0.030	0.049
Mooroolbark	Average	0.005	0.006	0.008	0.008	0.010	0.010	0.010	0.008	0.008	0.006	0.006	0.005	0.008	
	Data Recovery %	93	95	95	95	95	95	95	86	87	94	95	95	93	
	Maximum	0.027	0.028	0.033	0.028	0.027	0.028	0.030	0.027	0.027	0.022	0.033	0.019	0.033	
<b>Region Summary</b>	<b>Average</b>	<b>0.006</b>	<b>0.007</b>	<b>0.009</b>	<b>0.009</b>	<b>0.012</b>	<b>0.012</b>	<b>0.013</b>	<b>0.009</b>	<b>0.008</b>	<b>0.008</b>	<b>0.007</b>	<b>0.006</b>	<b>0.009</b>	
	<b>Data Recovery %</b>	<b>94</b>	<b>94</b>	<b>94</b>	<b>95</b>	<b>94</b>	<b>94</b>	<b>95</b>	<b>93</b>	<b>92</b>	<b>95</b>	<b>93</b>	<b>95</b>	<b>94</b>	
	<b>Maximum</b>	<b>0.038</b>	<b>0.035</b>	<b>0.045</b>	<b>0.042</b>	<b>0.038</b>	<b>0.045</b>	<b>0.043</b>	<b>0.035</b>	<b>0.034</b>	<b>0.049</b>	<b>0.033</b>	<b>0.030</b>	<b>0.049</b>	
WEST	Altona North	Average	0.005	0.007	0.009	0.011	0.013	0.014	0.015	0.011	0.008	0.009	0.006	0.006	
		Data Recovery %	93	88	94	92	87	93	84	90	90	89	94	94	
		Maximum	0.043	0.032	0.042	0.043	0.045	0.051	0.038	0.035	0.029	0.034	0.030	0.033	
	Deer Park	Average	0.005	0.007	0.008	0.008	0.012	0.010	0.011	0.007	0.007	0.007	0.006	0.006	
		Data Recovery %	94	89	95	95	95	95	95	95	94	95	95	95	
		Maximum	0.032	0.045	0.038	0.043	0.050	0.045	0.038	0.031	0.032	0.031	0.028	0.035	
	Footscray	Average	0.007	0.009	0.011	0.012	0.015	0.014	0.015	0.011	0.010	0.010	0.008	0.007	
		Data Recovery %	95	94	94	94	94	94	95	95	94	95	95	95	
		Maximum	0.042	0.046	0.043	0.045	0.058	0.062	0.037	0.039	0.032	0.043	0.027	0.032	
	Point Cook	Average	0.003	0.003		0.006	0.007	0.007	0.008	0.005	0.003		0.004	0.004	
Data Recovery %		80	92	73	94	93	76	95	84	95	73	94	85		
Maximum		0.037	0.025		0.036	0.033	0.035	0.029	0.028	0.025		0.022	0.023		
<b>Region Summary</b>	<b>Average</b>	<b>0.005</b>	<b>0.006</b>	<b>0.009</b>	<b>0.009</b>	<b>0.012</b>	<b>0.011</b>	<b>0.012</b>	<b>0.008</b>	<b>0.007</b>	<b>0.008</b>	<b>0.006</b>	<b>0.006</b>		
	<b>Data Recovery %</b>	<b>90</b>	<b>91</b>	<b>89</b>	<b>94</b>	<b>92</b>	<b>90</b>	<b>92</b>	<b>91</b>	<b>94</b>	<b>88</b>	<b>95</b>	<b>92</b>		
	<b>Maximum</b>	<b>0.043</b>	<b>0.046</b>	<b>0.043</b>	<b>0.045</b>	<b>0.058</b>	<b>0.062</b>	<b>0.038</b>	<b>0.039</b>	<b>0.032</b>	<b>0.043</b>	<b>0.030</b>	<b>0.035</b>		
GEELONG	Geelong South	Average	0.004	0.004	0.006	0.007	0.008	0.008	0.009	0.006	0.006	0.006	0.005	0.005	
		Data Recovery %	95	94	95	95	95	95	94	85	93	95	95	94	
		Maximum	0.021	0.021	0.039	0.028	0.038	0.029	0.027	0.029	0.025	0.025	0.021	0.023	
	<b>Region Summary</b>	<b>Average</b>	<b>0.004</b>	<b>0.004</b>	<b>0.006</b>	<b>0.007</b>	<b>0.008</b>	<b>0.008</b>	<b>0.009</b>	<b>0.006</b>	<b>0.006</b>	<b>0.006</b>	<b>0.005</b>	<b>0.005</b>	
	<b>Data Recovery %</b>	<b>95</b>	<b>94</b>	<b>95</b>	<b>95</b>	<b>95</b>	<b>95</b>	<b>94</b>	<b>85</b>	<b>93</b>	<b>95</b>	<b>95</b>	<b>94</b>		
	<b>Maximum</b>	<b>0.021</b>	<b>0.021</b>	<b>0.039</b>	<b>0.028</b>	<b>0.038</b>	<b>0.029</b>	<b>0.027</b>	<b>0.029</b>	<b>0.025</b>	<b>0.025</b>	<b>0.021</b>	<b>0.023</b>		
LATROBE VALLEY	Traralgon	Average	0.004	0.005	0.007	0.007	0.009	0.009	0.010	0.008	0.007	0.007	0.005	0.004	
		Data Recovery %	96	95	96	95	96	96	95	95	89	95	95	95	
		Maximum	0.022	0.019	0.026	0.026	0.026	0.026	0.028	0.031	0.021	0.026	0.022	0.021	
	<b>Region Summary</b>	<b>Average</b>	<b>0.004</b>	<b>0.005</b>	<b>0.007</b>	<b>0.007</b>	<b>0.009</b>	<b>0.009</b>	<b>0.010</b>	<b>0.008</b>	<b>0.007</b>	<b>0.007</b>	<b>0.005</b>	<b>0.004</b>	
	<b>Data Recovery %</b>	<b>96</b>	<b>95</b>	<b>96</b>	<b>95</b>	<b>96</b>	<b>96</b>	<b>95</b>	<b>95</b>	<b>89</b>	<b>95</b>	<b>95</b>	<b>95</b>		
	<b>Maximum</b>	<b>0.022</b>	<b>0.019</b>	<b>0.026</b>	<b>0.028</b>	<b>0.026</b>	<b>0.026</b>	<b>0.028</b>	<b>0.031</b>	<b>0.021</b>	<b>0.026</b>	<b>0.022</b>	<b>0.021</b>		

Note: Monthly maxima and averages for individual stations are not reported if data recovery is <75% (a maximum is recorded, however, if there has been an exceedance of a policy objective)



1-Hour Sulfur Dioxide			Policy Objective = 0.20 ppm													
Region	Station	1 Hour Average(ppm)	Jan	Feb	Mar	Apr	May	Jun	Jul	Aug	Sep	Oct	Nov	Dec	Annual	
EAST	Alphington	Average	-0.001	-0.002	-0.002	-0.001		-0.001	-0.001	-0.001	0.000	0.000	0.000	0.000	-0.001	
		Data Recovery %	91	87	89	91	67	87	90	89	89	91	90	89	87	
		Maximum	0.005	0.004	0.007	0.007		0.007	0.005	0.006	0.006	0.008	0.006	0.007	0.007	0.008
	Box Hill	Average	-0.002	-0.002	-0.002	-0.002	-0.001	-0.001	-0.001	-0.001	-0.001	-0.001	-0.001	-0.001	-0.001	-0.001
		Data Recovery %	92	93	90	90	91	90	88	94	95	95	95	95	92	
		Maximum	0.001	0.005	0.004	0.006	0.007	0.005	0.009	0.005	0.002	0.002	0.005	0.004	0.009	
<b>Region Summary</b>	<b>Average</b>	<b>-0.002</b>	<b>-0.002</b>	<b>-0.002</b>	<b>-0.001</b>	<b>-0.001</b>	<b>-0.001</b>	<b>-0.001</b>	<b>-0.001</b>	<b>-0.001</b>	<b>-0.001</b>	<b>-0.001</b>	<b>-0.001</b>	<b>-0.001</b>		
<b>Data Recovery %</b>	<b>91</b>	<b>90</b>	<b>90</b>	<b>90</b>	<b>79</b>	<b>88</b>	<b>89</b>	<b>92</b>	<b>92</b>	<b>93</b>	<b>93</b>	<b>92</b>	<b>90</b>			
<b>Maximum</b>	<b>0.005</b>	<b>0.005</b>	<b>0.007</b>	<b>0.007</b>	<b>0.007</b>	<b>0.007</b>	<b>0.007</b>	<b>0.009</b>	<b>0.006</b>	<b>0.008</b>	<b>0.006</b>	<b>0.007</b>	<b>0.007</b>	<b>0.009</b>		
WEST	Altona North	Average	0.002	0.001	0.002	0.002	0.002	0.002	0.001	0.001	0.003	0.003	0.001	0.002	0.002	
		Data Recovery %	89	82	94	80	81	93	84	90	86	94	94	88	88	
		Maximum	0.044	0.026	0.038	0.036	0.028	0.031	0.018	0.031	0.068	0.033	0.033	0.067	0.068	
	Footscray	Average	0.001	0.002	0.001	0.001	0.002	0.001	0.001	0.001		0.001	0.001	0.001	0.001	
		Data Recovery %	95	91	94	94	94	95	95	72	95	95	95	92	92	
		Maximum	0.029	0.017	0.019	0.013	0.037	0.023	0.024	0.015		0.013	0.012	0.017	0.037	
<b>Region Summary</b>	<b>Average</b>	<b>0.002</b>	<b>0.001</b>	<b>0.001</b>	<b>0.001</b>	<b>0.002</b>	<b>0.002</b>	<b>0.001</b>	<b>0.001</b>	<b>0.002</b>	<b>0.002</b>	<b>0.001</b>	<b>0.002</b>			
<b>Data Recovery %</b>	<b>92</b>	<b>86</b>	<b>94</b>	<b>87</b>	<b>88</b>	<b>94</b>	<b>89</b>	<b>92</b>	<b>81</b>	<b>90</b>	<b>95</b>	<b>94</b>	<b>90</b>			
<b>Maximum</b>	<b>0.044</b>	<b>0.026</b>	<b>0.038</b>	<b>0.036</b>	<b>0.037</b>	<b>0.031</b>	<b>0.024</b>	<b>0.031</b>	<b>0.068</b>	<b>0.033</b>	<b>0.033</b>	<b>0.067</b>	<b>0.068</b>			
GEELONG	Geelong South	Average	0.001	0.001	0.001		0.001		0.001	0.001	0.001	0.001	0.001	0.001	0.001	
		Data Recovery %	91	90	91	74	89	66	91	85	93	95	95	88	87	
		Maximum	0.038	0.024	0.015		0.024		0.015	0.013	0.018	0.027	0.028	0.021	0.052	
	<b>Region Summary</b>	<b>Average</b>	<b>0.001</b>	<b>0.001</b>	<b>0.001</b>	<b>0.001</b>	<b>0.001</b>	<b>0.001</b>	<b>0.001</b>	<b>0.001</b>	<b>0.001</b>	<b>0.001</b>	<b>0.001</b>	<b>0.001</b>		
<b>Data Recovery %</b>	<b>91</b>	<b>90</b>	<b>91</b>	<b>74</b>	<b>89</b>	<b>66</b>	<b>91</b>	<b>85</b>	<b>93</b>	<b>95</b>	<b>95</b>	<b>88</b>	<b>87</b>			
<b>Maximum</b>	<b>0.038</b>	<b>0.024</b>	<b>0.015</b>	<b>0.025</b>	<b>0.024</b>	<b>0.052</b>	<b>0.015</b>	<b>0.013</b>	<b>0.018</b>	<b>0.027</b>	<b>0.028</b>	<b>0.021</b>	<b>0.052</b>			
LATROBE VALLEY	Traralgon	Average	0.003	0.002	0.001	0.001	0.002	0.001	0.001	0.002	0.002	0.002	0.002	0.002	0.002	
		Data Recovery %	96	95	96	95	96	96	95	95	95	95	95	95	95	
		Maximum	0.049	0.012	0.022	0.020	0.008	0.012	0.016	0.011	0.026	0.028	0.037	0.017	0.049	
	<b>Region Summary</b>	<b>Average</b>	<b>0.003</b>	<b>0.002</b>	<b>0.001</b>	<b>0.001</b>	<b>0.002</b>	<b>0.001</b>	<b>0.001</b>	<b>0.002</b>	<b>0.002</b>	<b>0.002</b>	<b>0.002</b>	<b>0.002</b>		
<b>Data Recovery %</b>	<b>96</b>	<b>95</b>	<b>96</b>	<b>95</b>	<b>96</b>	<b>96</b>	<b>95</b>	<b>95</b>	<b>95</b>	<b>95</b>	<b>95</b>	<b>95</b>	<b>95</b>			
<b>Maximum</b>	<b>0.049</b>	<b>0.012</b>	<b>0.022</b>	<b>0.020</b>	<b>0.008</b>	<b>0.012</b>	<b>0.016</b>	<b>0.011</b>	<b>0.026</b>	<b>0.028</b>	<b>0.037</b>	<b>0.017</b>	<b>0.049</b>			

Note: Monthly maxima and averages for individual stations are not reported if data recovery is <75% (a maximum is recorded, however, if there has been an exceedence of a policy objective)

24-Hour Sulfur Dioxide			Policy Objective = 0.08 ppm												
Region	Station	24 Hour Average (ppm)	Jan	Feb	Mar	Apr	May	Jun	Jul	Aug	Sep	Oct	Nov	Dec	Annual
EAST	Alphington	Maximum	0.000	-0.001	0.002	0.003		0.004	0.000	0.001	0.002	0.001	0.002	0.002	0.004
	Box Hill	Maximum	-0.001	0.000	0.000	0.001	0.001	0.000	0.002	0.001	-0.001	0.000	0.000	-0.001	0.002
	<b>Region Summary</b>	<b>Maximum</b>	<b>0.000</b>	<b>0.000</b>	<b>0.002</b>	<b>0.003</b>	<b>0.001</b>	<b>0.004</b>	<b>0.002</b>	<b>0.001</b>	<b>0.002</b>	<b>0.001</b>	<b>0.002</b>	<b>0.002</b>	<b>0.004</b>
WEST	Altona North	Maximum	0.009	0.005	0.009	0.006	0.005	0.008	0.004	0.005	0.017	0.013	0.004	0.026	0.026
	Footscray	Maximum	0.003	0.004	0.002	0.003	0.006	0.005	0.005	0.004		0.003	0.003	0.005	0.006
	<b>Region Summary</b>	<b>Maximum</b>	<b>0.009</b>	<b>0.005</b>	<b>0.009</b>	<b>0.006</b>	<b>0.006</b>	<b>0.008</b>	<b>0.005</b>	<b>0.005</b>	<b>0.017</b>	<b>0.013</b>	<b>0.004</b>	<b>0.026</b>	<b>0.026</b>
GEELONG	GeelongSouth	Maximum	0.003	0.003	0.003	0.004	0.003		0.004	0.004	0.004	0.007	0.004	0.005	0.007
	<b>Region Summary</b>	<b>Maximum</b>	<b>0.003</b>	<b>0.003</b>	<b>0.003</b>	<b>0.004</b>	<b>0.003</b>	<b>0.005</b>	<b>0.004</b>	<b>0.004</b>	<b>0.004</b>	<b>0.007</b>	<b>0.004</b>	<b>0.005</b>	<b>0.007</b>
	LATROBE VALLEY	Traralgon	Maximum	0.007	0.003	0.005	0.003	0.004	0.003	0.002	0.004	0.005	0.006	0.007	0.004
<b>Region Summary</b>		<b>Maximum</b>	<b>0.007</b>	<b>0.003</b>	<b>0.005</b>	<b>0.003</b>	<b>0.004</b>	<b>0.003</b>	<b>0.002</b>	<b>0.004</b>	<b>0.005</b>	<b>0.006</b>	<b>0.007</b>	<b>0.004</b>	<b>0.007</b>

Note: Monthly maxima and averages for individual stations are not reported if data recovery is <75% (a maximum is recorded, however, if there has been an exceedence of a policy objective)

