



VICTORIA'S AIR QUALITY 2007

AIR MONITORING DATA

Victoria's Air Quality 2007

Section 1 - Report card

An assessment of compliance with the air quality goals and objectives

Section 2 - Trend analysis

An update of the overall trends in air quality in Melbourne

Section 3 - Monthly data tables

Tabulated monthly air quality statistics

Section 1 - Report card

An assessment of compliance with the air quality goals and objectives

Compliance with Air Quality Objectives
Assessment of Victoria's air quality on a station-by-station basis

The numbers in the table indicate the number of days the objectives were not met.

Region	Station	Particles			Ozone		NO ₂		CO	SO ₂			
		Visibility	PM ₁₀	PM _{2.5}	1 hr	4 hr	1 hr	24 hr	8hr	1 hr	24 hr	1 year	
M E L B O U R N E	City	Richmond	23	3				0	0	0			
	East	Alphington	20	2	3	1	1	0	0	0	0	0	0
		Box Hill	23	2		1	1	0*	0*	0	0*	0*	0*
		Brighton	19	1		1	1	0	0				
		Macleod		1		1	2						
		Dandenong	20	5		1	1	0	0				
		Mooroolbark	33	11		0	0	0	0	0	0	0	0
	West	Altona North				1	1	0	0	0	0	0	0
		Deer Park ⁺	3*	0*		0*	0*	0*	0*				
		Footscray	26	4	1	1	1	0	0	0	0	0	0
		Melton				0*	0*						
		Pt Cook	19			0	1	0	0				
GEELONG	Geelong South	17	14		0	0	0	0	0	0	0	0	
	Pt Henry				1	1							
LATROBE VALLEY	Moe	33	13*		0	1	0	0		0	0	0	
	Traralgon	33	5		0	1	0	0		0	0	0	
OTHER RURAL	Bairnsdale ⁺		7 ⁺										
	Wangaratta	31	9		0	1							
	Warrnambool ⁺	9*	0*		0*	0*							

Objective and Goal met	Exceeded the Objective, but met the Goal	Goal not Met	*	Insufficient data to demonstrate compliance
------------------------	--	--------------	---	---

* Monitoring for this pollutant did not meet the 75% data capture target (ie. data capture in each quarter of the year)

⁺ Station only operated for part of the year.

On an annual basis, EPA assesses the air quality monitored at each station against the state and national air quality objectives and goals.

The numbers presented in the Table show the number of days that an air quality objective was not met.

Shading is used to indicate the assessment against the goals, with:

- *Green shading* indicating that the 2008 goal was met;
- *Red shading*, that the 2008 goal was not met; and
- *Yellow shading*, that whilst the 2008 goal was met, there were still days when the objective was not met

Monitoring instruments not meeting the data capture target are indicated by an asterisk and cells are not shaded yellow or green.

A blank cell indicates that monitoring for a particular pollutant was not performed at this station.

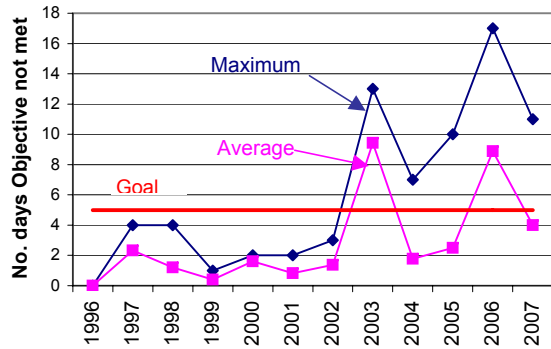
Note, for PM_{2.5} there is no 2008 goal and monitoring occurs on a one-day-in-three basis.

Section 2 - Trend analysis

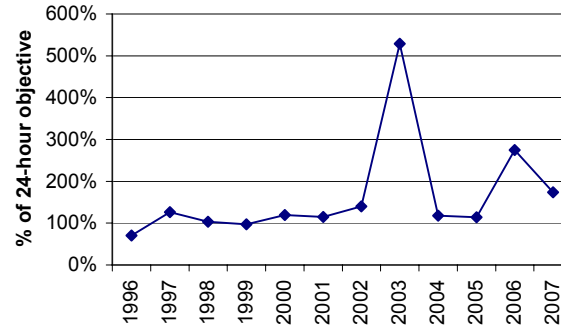
An update of the overall trends in air quality in Melbourne

Trends of air quality in Melbourne

1. Particles smaller than 10µm (PM₁₀)



(a) Days not meeting the PM₁₀ objective

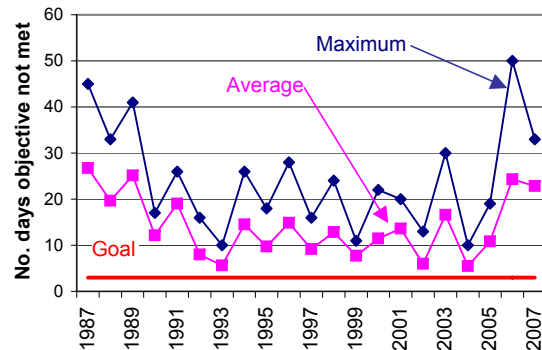


(b) Maximum 24-hour PM₁₀

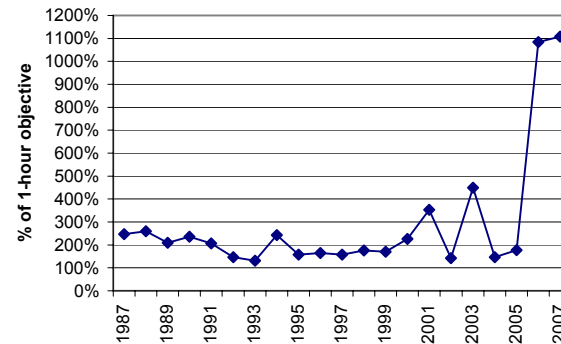


(c) Annual average PM₁₀

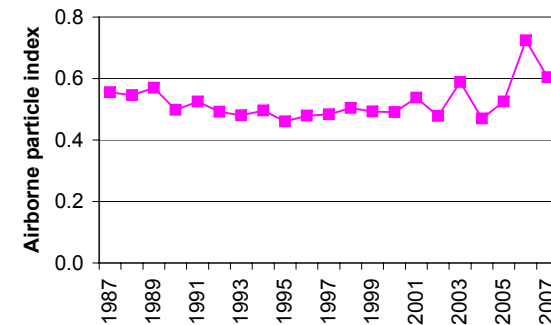
2. Visibility measured as API



(a) Days not meeting the visibility objective



(b) Maximum 1-hour API



(c) Annual average API

These graphs update those in Appendix 1 of EPA Report 1140, Victoria's Air Quality - 2006

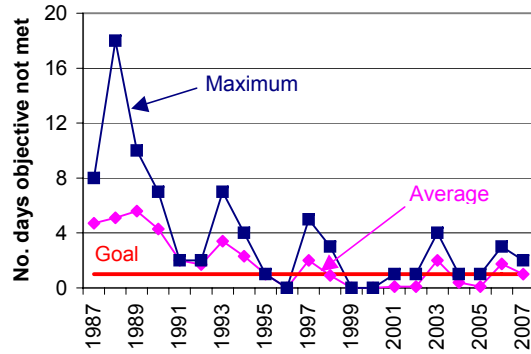
[Victoria's Air Quality - 2006](#)

A range of trend parameters for Melbourne are presented:

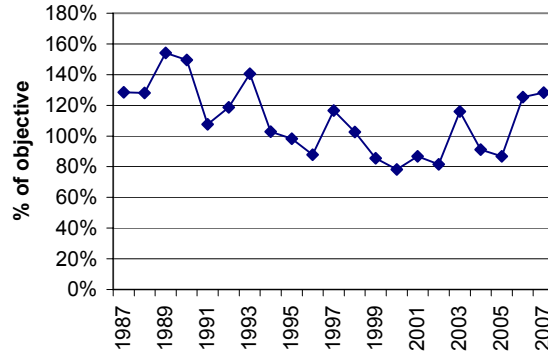
- Days not meeting the objective – Two values for this parameter are presented. The maximum number gives the value for the station recording the highest number of days not meeting the air quality objective each year (that is, the worst performing station that year). The average number (calculated by averaging the number of days at each station in Melbourne) is a better indicator for how Melbourne is performing overall rather than simply looking at an individual station.
- Maximum pollutant levels – This looks at the highest pollutant levels recorded over the year. The value is calculated by averaging the maximum pollutant levels recorded at each monitoring station in Melbourne over any one year.
- Average pollutant levels – In addition to the peak levels, we are also interested in the average pollutant level across Melbourne for the year. This is calculated by averaging levels from each station.

Trends of air quality in Melbourne (continued)

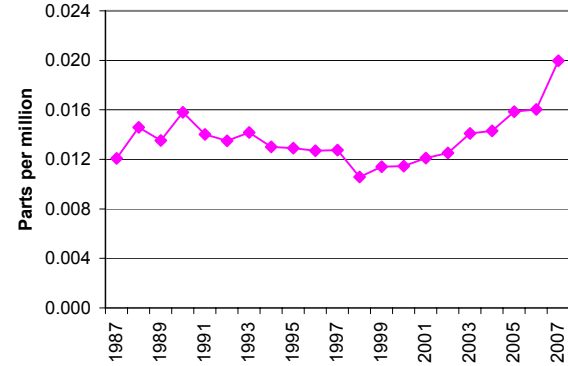
3. Ozone



(a) Days not meeting the four-hour ozone objective

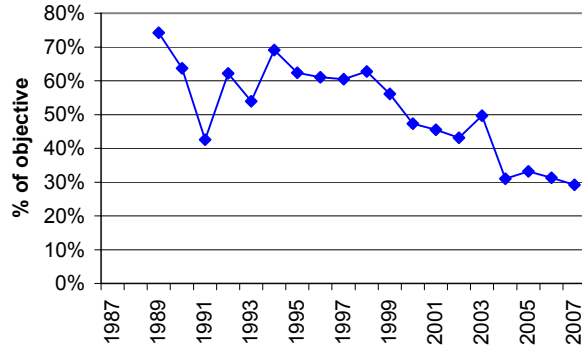


(b) Maximum four-hour ozone

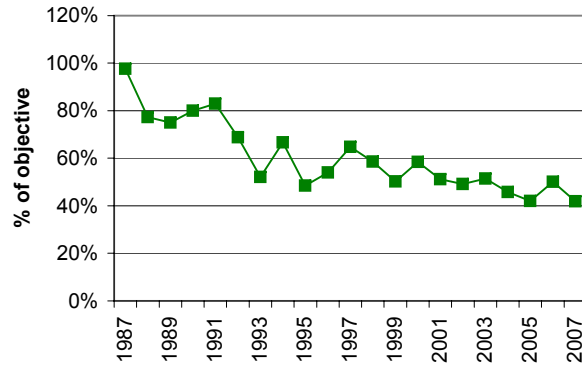


(c) Annual average ozone

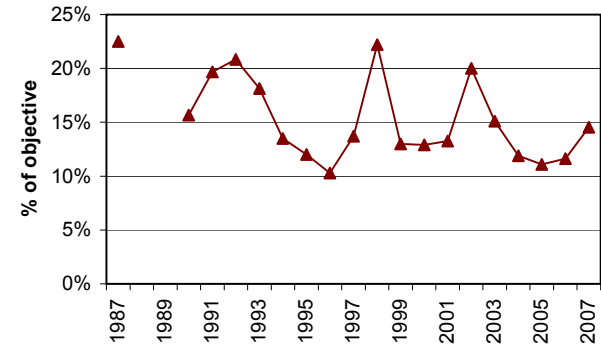
4. Other gases



(a) Maximum eight-hour CO



(b) Maximum one-hour NO₂



(c) Maximum one-hour SO₂

Section 3 - Monthly data tables

Tabulated monthly air quality statistics

1-Hour Visibility (as API)			Policy Objective = 2.35													
Region	Station	1 Hour Average	Jan	Feb	Mar	Apr	May	Jun	Jul	Aug	Sep	Oct	Nov	Dec	Annual	
CITY	Richmond	Average	0.96	0.73	0.50	0.80	0.54	0.67	0.55	0.51	0.45	0.49	0.59	0.50	0.61	
		Data Recovery %	94	76	95	95	92	95	95	95	95	95	95	94	95	93
		No. of Exceedences	7	0	1	7	2	1	2	0	0	0	2	2	1	23
		Maximum	16.78	2.22	2.85	3.74	3.33	3.39	3.74	1.79	1.70	1.94	2.84	3.24	3.24	16.78
Region Summary	Average	0.96	0.73	0.50	0.80	0.54	0.67	0.55	0.51	0.45	0.49	0.59	0.50	0.61		
	Data Recovery %	94	76	95	95	92	95	95	95	95	95	95	94	95	93	
	No. of Exceedences	16.78	2.22	2.85	3.74	3.33	3.39	3.74	1.79	1.70	1.94	2.84	3.24	3.24	16.78	
	Maximum	16.78	2.22	2.85	3.74	3.33	3.39	3.74	1.79	1.70	1.94	2.84	3.24	3.24	16.78	
EAST	Alphington	Average	0.93	0.70	0.54	0.80	0.56	0.77	0.60	0.55	0.48	0.49	0.58	0.50	0.62	
		Data Recovery %	95	95	96	95	95	96	94	96	95	95	95	96	95	95
		No. of Exceedences	6	0	0	6	2	1	2	0	0	0	2	1	1	20
		Maximum	11.78	2.18	2.31	5.30	3.51	3.01	3.51	1.56	1.50	1.85	2.94	2.52	2.52	11.78
	Box Hill	Average	1.05	0.71	0.50	0.81	0.47	0.66	0.51	0.47	0.41	0.48	0.56	0.49	0.57	
		Data Recovery %	84	47	95	95	95	95	96	96	95	95	95	96	91	
		No. of Exceedences	7	0	0	8	1	3	2	0	0	1	1	1	23	
		Maximum	24.51	1.88	1.88	5.17	2.81	2.81	3.66	1.62	1.08	1.93	3.03	2.96	24.51	
	Brighton	Average	0.94	0.66	0.52	0.75	0.48	0.60	0.51	0.49	0.44	0.48	0.59	0.50	0.58	
		Data Recovery %	95	95	95	95	95	95	95	95	95	95	95	96	95	
		No. of Exceedences	7	0	0	6	2	1	2	0	0	0	1	0	19	
		Maximum	18.43	1.85	2.24	4.17	3.30	2.99	3.98	1.70	2.07	1.62	2.69	1.49	18.43	
	Dandenong	Average	0.98	0.68	0.55	0.81	0.53	0.72	0.56	0.51	0.46	0.51	0.61	0.50	0.62	
		Data Recovery %	88	95	96	95	96	95	95	95	95	95	95	96	95	
		No. of Exceedences	8	0	1	4	2	3	2	0	0	0	2	0	20	
		Maximum	17.49	2.06	2.79	5.61	3.72	3.22	3.91	1.60	1.46	2.11	2.33	2.16	17.49	
Mooroolbark	Average	1.20	0.65	0.53	1.13	0.66	0.94	0.72	0.63	0.51	0.57	0.61	0.55	0.72		
	Data Recovery %	89	95	95	89	95	95	94	95	95	95	95	95	94		
	No. of Exceedences	6	0	0	10	1	8	4	1	0	0	2	1	33		
	Maximum	40.38	2.25	1.95	16.38	4.13	4.45	5.16	2.43	2.06	2.32	2.51	2.75	40.38		
Region Summary	Average	1.02	0.64	0.53	0.86	0.54	0.74	0.58	0.53	0.46	0.50	0.59	0.51	0.62		
	Data Recovery %	90	86	95	94	95	95	95	95	95	95	95	96	94		
	No. of Exceedences	40.38	2.25	2.79	16.38	4.13	4.45	5.16	2.43	2.07	2.32	3.03	2.96	40.38		
	Maximum	40.38	2.25	2.79	16.38	4.13	4.45	5.16	2.43	2.07	2.32	3.03	2.96	40.38		
WEST	Deer Park	Average							0.42	0.41	0.39	0.45	0.56	0.44		
		Data Recovery %							56	95	95	95	85	95	94	
		No. of Exceedences							0	1	0	0	1	1	0	
		Maximum							2.82	1.24	1.07	2.38	2.37	1.90	2.82	
	Footscray	Average	0.84	0.72	0.54	0.71	0.49	0.55	0.48	0.47	0.43	0.50	0.64	0.58	0.58	
		Data Recovery %	95	96	95	95	95	95	95	95	95	95	95	95	95	
		No. of Exceedences	8	2	2	4	1	1	3	1	0	1	2	1	26	
		Maximum	8.33	3.01	2.77	3.85	3.13	2.51	3.06	4.23	1.11	2.79	3.82	63.93	63.93	
Pt.Cook	Average	0.87	0.64	0.50	0.64	0.45	0.44	0.42	0.40	0.39	0.44	0.58	0.48	0.52		
	Data Recovery %	94	95	95	95	95	95	94	96	95	95	94	95	95		
	No. of Exceedences	7	1	3	4	1	0	1	0	0	0	2	0	19		
	Maximum	15.02	2.80	9.89	2.85	3.02	2.31	2.74	1.13	1.03	2.16	2.58	1.52	15.02		
Region Summary	Average	0.86	0.68	0.52	0.67	0.47	0.46	0.44	0.43	0.40	0.46	0.59	0.51	0.54		
	Data Recovery %	95	96	95	95	95	95	95	95	95	95	95	95	94		
	No. of Exceedences	15.02	3.01	9.89	3.85	3.13	2.51	3.06	4.23	1.11	2.79	3.82	63.93	63.93		
	Maximum	15.02	3.01	9.89	3.85	3.13	2.51	3.06	4.23	1.11	2.79	3.82	63.93	63.93		
GEELONG	GeelongSouth	Average	0.77	0.64	0.56	0.65	0.51	0.46	0.48	0.44	0.41	0.46	0.55	0.48	0.53	
		Data Recovery %	95	95	96	95	94	96	95	95	95	95	95	95	95	
		No. of Exceedences	6	2	3	0	2	0	2	0	0	1	1	0	17	
		Maximum	21.30	2.62	6.30	2.29	2.89	1.77	2.66	1.22	1.31	2.99	2.42	1.56	21.30	
Region Summary	Average	0.77	0.64	0.56	0.65	0.51	0.46	0.48	0.44	0.41	0.46	0.55	0.48	0.53		
	Data Recovery %	95	95	96	95	94	96	95	95	95	95	95	95	95		
	No. of Exceedences	21.30	2.62	6.30	2.29	2.89	1.77	2.66	1.22	1.31	2.99	2.42	1.56	21.30		
	Maximum	21.30	2.62	6.30	2.29	2.89	1.77	2.66	1.22	1.31	2.99	2.42	1.56	21.30		
LATROBE VALLEY	Moe	Average	1.43	0.64	0.52	0.86	0.65	0.71	0.60	0.49	0.46	0.50	0.52	0.50	0.66	
		Data Recovery %	96	95	96	96	96	91	87	96	96	96	96	96	95	
		No. of Exceedences	11	1	0	9	2	4	3	0	1	1	1	0	33	
		Maximum	44.30	2.52	2.23	6.34	5.82	3.01	2.70	1.91	2.67	2.57	2.53	1.82	44.30	
	Traralgon	Average	1.48	0.55	0.46	0.89	0.70	0.67	0.67	0.58	0.49	0.49	0.53	0.49	0.67	
		Data Recovery %	96	95	96	89	96	96	96	96	96	96	96	96	95	
		No. of Exceedences	9	1	1	9	1	2	6	2	0	1	0	1	33	
		Maximum	94.35	2.53	2.68	11.90	8.71	2.84	4.46	3.46	2.29	4.05	2.34	2.39	94.35	
Region Summary	Average	1.46	0.60	0.49	0.88	0.68	0.69	0.64	0.53	0.48	0.49	0.53	0.50	0.66		
	Data Recovery %	96	95	96	92	96	93	91	96	96	96	96	96	95		
	No. of Exceedences	94.35	2.53	2.68	11.90	8.71	3.01	4.46	3.46	2.67	4.05	2.53	2.39	94.35		
	Maximum	94.35	2.53	2.68	11.90	8.71	3.01	4.46	3.46	2.67	4.05	2.53	2.39	94.35		
OTHER RURAL	Wangaratta	Average	1.75	0.56	0.47	0.76	0.66	0.68	0.61	0.59	0.48	0.45	0.39	0.66		
		Data Recovery %	94	95	95	95	95	96	94	95	95	95	95	39		
		No. of Exceedences	9	1	0	3	5	8	3	2	0	0	0	0		
		Maximum	39.72	2.93	1.91	5.43	3.16	3.31	2.63	2.68	1.56	1.78	0.92	39.72		
Warrnambool	Average	0.56	0.69	0.54	0.50	0.44	0.40	0.38	0.41	0.41	0.44			0.48		
	Data Recovery %	95	95	95	95	95	95	95	95	95	91			79		
	No. of Exceedences	3	3	1	1	0	1	0	0	0	0			9		
	Maximum	9.68	3.87	6.92	4.15	2.32	2.39	1.43	1.37	0.95	1.65			9.68		

Note: Monthly maxima and averages for individual stations are not reported if data recovery is <75% (a maximum is recorded, however, if there has been an exceedence of a policy objective)

24-Hour PM ₁₀ by TEOM			Policy Objective = 50 mg/m ³													
Region	Station	24 Hour Average (mg/m ³)	Jan	Feb	Mar	Apr	May	Jun	Jul	Aug	Sep	Oct	Nov	Dec	Annual	
CITY	Richmond	Average	24.9	22.0	17.9			17.9	12.9	17.0	16.9	17.2	16.2	16.7	17.9	
		Data Recovery %	100	100	100	63	65	100	100	100	100	100	100	100	100	94
		No. of Exceedences	3	0	0	0	0	0	0	0	0	0	0	0	0	3
		Maximum	78.7	36.5	33.4			30.4	32.2	30.4	37.6	31.7	32.7	37.3	78.7	
Region Summary	Average	24.9	22.0	17.9			17.9	12.9	17.0	16.9	17.2	16.2	16.7	17.9		
	Data Recovery %	100	100	100	63	65	100	100	100	100	100	100	100	94		
	No. of Exceedences	3	0	0	0	0	0	0	0	0	0	0	0	3		
	Maximum	78.7	36.5	33.4			30.4	32.2	30.4	37.6	31.7	32.7	37.3	78.7		
EAST	Alphington	Average	25.1	23.8	21.3	23.0	15.9	19.3	14.8	17.1	17.7	20.1	17.2	18.5	19.4	
		Data Recovery %	100	100	100	100	100	100	100	100	100	100	100	100	100	
		No. of Exceedences	2	0	0	0	0	0	0	0	0	0	0	0	2	
		Maximum	83.1	38.8	38.3	47.6	37.1	32.2	30.4	30.9	35.2	41.0	35.4	40.3	83.1	
	Box.Hill	Average	27.3		16.1	17.2	14.1	16.5	12.2	14.5	14.6	17.7	17.0	16.4	16.5	
		Data Recovery %	81	50	100	83	100	97	100	100	100	100	100	100	93	
		No. of Exceedences	2	0	0	0	0	0	0	0	0	0	0	0	2	
		Maximum	90.2		31.0	36.4	32.5	25.7	25.8	29.7	26.5	35.0	33.0	37.0	90.2	
	Brighton	Average	20.0	18.0	16.8	17.0	9.8	12.8	10.0	12.7	13.7	16.5	15.1	15.6	14.8	
		Data Recovery %	97	100	100	100	100	100	100	100	100	100	100	100	100	
		No. of Exceedences	1	0	0	0	0	0	0	0	0	0	0	0	1	
		Maximum	78.4	31.0	30.4	36.9	28.2	21.3	32.5	21.2	25.3	31.7	35.3	32.7	78.4	
	Dandenong	Average	26.5	28.9	24.3	26.2	15.4	22.0	14.5	15.2	17.1	22.3	22.3	20.6	21.2	
		Data Recovery %	100	100	100	100	100	100	100	100	100	100	100	100	100	
		No. of Exceedences	3	0	0	1	0	0	1	0	0	0	0	0	5	
		Maximum	84.6	41.0	47.9	56.2	35.7	43.2	52.2	30.6	46.3	40.4	47.4	39.0	84.6	
	Macleod	Average		21.8	19.1	18.6	12.6	16.5	12.0	15.4	16.4	18.8	17.0	16.3	17.3	
		Data Recovery %	68	100	100	100	94	77	100	100	100	87	100	97	93	
		No. of Exceedences	1	0	0	0	0	0	0	0	0	0	0	0	1	
		Maximum	76.6	38.5	35.6	35.8	25.6	31.7	22.5	30.8	29.0	35.0	33.2	38.5	76.6	
	Mooroolbark	Average	29.9	24.7	22.4	28.4	21.3	25.1	18.2	21.0	19.3	21.3	18.7	18.6	22.4	
		Data Recovery %	100	100	100	100	100	100	100	100	100	100	100	100	100	
		No. of Exceedences	4	0	2	4	0	1	0	0	0	0	0	0	11	
		Maximum	136.1	42.1	55.8	65.2	49.6	50.3	42.0	38.1	28.1	49.4	45.7	39.1	136.1	
Region Summary	Average	25.8	22.9	20.0	21.9	14.9	18.8	13.6	16.0	16.5	19.5	17.9	17.7	18.6		
	Data Recovery %	91	92	100	97	99	96	100	100	100	98	100	99	98		
	No. of Exceedences	4	0	2	4	0	1	0	0	0	0	0	0	11		
	Maximum	136.1	42.1	55.8	65.2	49.6	50.3	42.0	38.1	28.1	49.4	45.7	39.1	136.1		
WEST	Deer Park	Average						11.7	13.4	15.9	19.7	19.3	19.4	16.5		
		Data Recovery %						40	100	94	100	100	100	53		
		No. of Exceedences						0	0	0	0	0	0	0		
		Maximum						29.1	29.9	26.4	38.8	38.7	42.1	42.1		
	Footscray	Average	24.0	24.8	23.1	23.0	14.3	16.7	14.1	19.9	18.3	22.2	19.5	20.7	20.0	
		Data Recovery %	100	100	100	100	97	100	100	100	100	100	100	97	99	
		No. of Exceedences	2	0	0	0	0	0	0	1	0	1	0	0	4	
		Maximum	65.9	40.3	46.5	46.0	33.9	30.7	38.6	51.0	30.8	50.5	36.1	40.8	65.9	
Region Summary	Average	24.0	24.8	23.1	23.0	14.3	16.7	14.1	19.9	18.3	22.2	19.5	20.7	20.0		
	Data Recovery %	100	100	100	100	97	100	100	100	100	100	100	97	99		
	No. of Exceedences	2	0	0	0	0	0	0	1	0	1	0	0	4		
	Maximum	65.9	40.3	46.5	46.0	33.9	30.7	38.6	51.0	30.8	50.5	36.1	40.8	65.9		
GEELONG	GeelongSouth	Average	28.0	28.7	28.2	24.9	18.5	15.0	15.6	20.3	17.6	25.0	18.2	19.8	21.7	
		Data Recovery %	100	100	100	100	87	100	100	100	100	100	100	100	99	
		No. of Exceedences	5	2	2	0	0	0	0	2	0	3	0	0	14	
		Maximum	64.5	60.2	129.1	45.7	32.7	30.7	33.0	62.9	28.2	100.6	44.8	32.8	129.1	
Region Summary	Average	28.0	28.7	28.2	24.9	18.5	15.0	15.6	20.3	17.6	25.0	18.2	19.8	21.7		
	Data Recovery %	100	100	100	100	87	100	100	100	100	100	100	100	99		
	No. of Exceedences	5	2	2	0	0	0	0	2	0	3	0	0	14		
	Maximum	64.5	60.2	129.1	45.7	32.7	30.7	33.0	62.9	28.2	100.6	44.8	32.8	129.1		
LATROBE VALLEY	Moe	Average	34.8	33.7	26.2	24.8	17.5	16.3	16.2		16.1	19.9	18.6	18.7	21.7	
		Data Recovery %	97	93	100	97	94	90	90	42	87	100	100	100	91	
		No. of Exceedences	5	4	1	2	0	0	0	0	0	1	0	0	13	
		Maximum	137.2	86.6	128.5	53.7	37.1	24.2	32.6		23.2	52.3	35.1	36.1	137.2	
	Traralgon	Average	28.7	20.3	17.2		18.2	17.4	17.4	10.2	14.5	18.5	17.7	19.3	18.5	
		Data Recovery %	100	100	100	73	87	97	100	100	100	100	100	100	96	
		No. of Exceedences	3	0	0	1	1	0	0	0	0	0	0	0	5	
		Maximum	151.2	31.5	29.9	50.8	53.2	33.0	36.1	19.3	23.3	31.1	36.0	38.2	151.2	
Region Summary	Average	31.7	26.8	21.7	24.9	17.8	16.9	16.9	10.9	15.2	19.2	18.1	19.0	20.1		
	Data Recovery %	98	96	100	85	90	93	95	71	93	100	100	100	94		
	No. of Exceedences	3	0	0	1	1	0	0	0	0	0	0	0	5		
	Maximum	151.2	86.6	128.5	53.7	53.2	33.0	36.1	19.3	23.3	31.1	36.0	38.2	151.2		
OTHER RURAL	Bairnsdale	Average	31.9	16.7	14.5	21.6	14.1	14.2							48	
		Data Recovery %	87	100	100	97	97	100							7	
		No. of Exceedences	4	0	0	3	0	0							7	
		Maximum	156.4	27.5	31.6	67.7	24.8	24.7							156.4	
	Wangaratta	Average	37.4	23.3	21.3	29.4	18.8	19.2	18.1	22.0	19.7	23.2	14.8		22.4	
		Data Recovery %	100	100	100	100	100	100	100	100	100	100	100	39	95	
		No. of Exceedences	6	0	1	2	0	0	0	0	0	0	0	0	9	
		Maximum	149.6	43.9	58.1	55.8	33.8	38.2	37.0	39.3	27.4	42.5	33.1		149.6	
Warrambool	Average	17.8	22.9	22.3	19.2	8.2	11.0	8.6	10.9	14.5	15.0			15.0		
	Data Recovery %	100	100	100	100	100	100	100	100	100	94			83		
	No. of Exceedences	0	0	0	0	0	0	0	0	0	0			0		
	Maximum	44.6	42.9	48.6	42.7	23.4	19.0	18.2	21.1	32.0	35.7			48.6		

Note: (1) Monthly maxima and averages for individual stations are not reported if data recovery is <75%
 Figures for Bairnsdale corrected 12 December 2008

(2) Data recovery is based on the number of valid days (where hourly data capture is >75% on an individual day)

24-Hour PM ₁₀ by HiVol			Policy Objective = 50 mg/m ³													
Region	Station	24 Hour Average (mg/m ³)	Jan	Feb	Mar	Apr	May	Jun	Jul	Aug	Sep	Oct	Nov	Dec	Annual	
EAST	Alphington	Average	26.6	24.5		16.5		18.7	16.7	15.7	15.2	16.0	13.5	16.6	17.7	
		Data Recovery %	80	100	60	100	20	100	100	100	100	100	100	100	100	89
		No. of Exceedences	0	0	0	0	0	0	0	0	0	0	0	0	0	0
		Maximum	45.5	33.0		28.2		34.7	29.4	25.4	20.5	30.9	18.9	20.0	45.5	
WEST	Footscray	Average		28.9		15.6		16.2	15.2	15.4	15.9	18.0	14.9	18.6	18.5	
		Data Recovery %	60	80	60	100	20	100	80	80	100	100	100	100	100	82
		No. of Exceedences	0	0	0	0	0	0	0	0	0	0	0	0	0	0
		Maximum		35.5	44.6	23.3		30.1	27.1	20.0	20.9	34.0	21.7	22.2	44.6	

Note: (1) HiVols are operated on a one day in six basis.
(2) Data recovery is based on the number of valid days

24-Hour PM _{2.5} by Partisol		Advisory Reporting Standard = 25 mg/m ³														
Region	Station	24 Hour Average (mg/m ³)	Jan	Feb	Mar	Apr	May	Jun	Jul	Aug	Sep	Oct	Nov	Dec	Annual	
EAST	Alphington	Average	13.2	8.6	6.8	12.1	6.5	9.7	8.3	8.2	5.2	6.9	6.0	6.2	8.0	
		Data Recovery %	100	100	100	50	100	100	100	100	100	91	100	100	100	95
		No. of Exceedences	2	0	0	0	0	0	1	0	0	0	0	0	0	3
		Maximum	36.0	12.8	10.6	21.4	17.2	23.6	25.2	17.1	7.5	11.4	9.0	10.4	36.0	
WEST	Footscray	Average		11.0	7.2	10.2	5.8	6.7	6.8	6.8	4.6	6.8	7.0	6.8	7.4	
		Data Recovery %	73	100	80	90	100	100	100	100	100	100	100	100	95	
		No. of Exceedences	1	0	0	0	0	0	0	0	0	0	0	0	1	
		Maximum	33.1	20.7	11.7	25.0	13.1	18.0	23.1	11.0	6.8	11.0	11.4	10.0	33.1	

Note: (1) Partisols are operated on a one day in three basis
(2) Data recovery is based on the number of valid days

24-Hour PM _{2.5} by TEOM																
Region	Station	24 Hour Average (mg/m ³)	Jan	Feb	Mar	Apr	May	Jun	Jul	Aug	Sep	Oct	Nov	Dec	Annual	
EAST	Alphington	Average	12.4	8.5	5.0	8.1	4.6	6.2	4.6	4.8	4.3	6.4	5.4	5.0	6.3	
		Data Recovery %	100	100	100	100	100	100	100	100	100	100	100	100	100	100
		Maximum	59.4	15.1	9.2	20.5	17.7	13.2	14.9	11.1	8.2	18.0	12.9	14.3	59.4	
WEST	Footscray	Average	8.6	7.6	5.3	7.4	3.4	4.1	3.3	4.3	3.7	4.4	6.3	5.0	5.3	
		Data Recovery %	100	100	100	100	100	100	100	100	100	97	100	97	99	
		Maximum	42.9	15.1	11.8	22.1	12.8	10.6	11.9	9.1	8.0	11.9	12.2	13.4	42.9	

Note: (1) Monthly maxima and averages for individual stations are not reported if data recovery is <75%
(2) Data recovery is based on the number of valid days (where hourly data capture is >75% on an individual day)

1-Hour Ozone			Policy Objective = 0.10 ppm													
Region	Station	1 Hour Average (ppm)	Jan	Feb	Mar	Apr	May	Jun	Jul	Aug	Sep	Oct	Nov	Dec	Annual	
EAST	Alphington	Average	0.025	0.028	0.018	0.011	0.011	0.011	0.014	0.016	0.019	0.020	0.020	0.020	0.018	
		Data Recovery %	95	95	95	93	93	95	94	95	95	95	95	95	84	94
		No. of Exceedences	1	0	0	0	0	0	0	0	0	0	0	0	0	1
		Maximum	0.121	0.077	0.068	0.037	0.031	0.035	0.031	0.048	0.039	0.052	0.073	0.062	0.121	
	Box Hill	Average	0.020		0.018	0.016	0.017	0.010	0.014	0.018	0.022	0.022	0.023	0.025	0.019	
		Data Recovery %	81	47	95	95	95	94	95	95	93	95	95	95	90	
		No. of Exceedences	1	0	0	0	0	0	0	0	0	0	0	0	1	
		Maximum	0.117		0.067	0.059	0.040	0.034	0.031	0.036	0.040	0.056	0.077	0.073	0.117	
	Brighton	Average	0.024	0.028	0.022	0.018	0.018	0.018	0.018	0.019	0.023	0.025	0.025	0.024	0.022	
		Data Recovery %	95	95	94	95	95	95	94	95	95	95	95	96	95	
		No. of Exceedences	1	0	0	0	0	0	0	0	0	0	0	0	1	
		Maximum	0.122	0.077	0.061	0.045	0.040	0.037	0.034	0.036	0.040	0.057	0.082	0.077	0.122	
	Dandenong	Average	0.020	0.023	0.018	0.013	0.015	0.012	0.015	0.015	0.019	0.020	0.020	0.021	0.018	
		Data Recovery %	94	95	96	95	92	95	90	91	95	95	95	96	94	
No. of Exceedences		1	0	0	0	0	0	0	0	0	0	0	0	1		
Maximum		0.112	0.076	0.071	0.043	0.040	0.035	0.033	0.032	0.037	0.047	0.078	0.074	0.112		
Macleod	Average	0.030	0.036	0.017	0.012	0.014	0.009	0.014	0.016	0.020	0.022	0.024	0.024	0.020		
	Data Recovery %	94	95	95	94	90	83	92	95	95	88	95	94	93		
	No. of Exceedences	1	0	0	0	0	0	0	0	0	0	0	0	1		
	Maximum	0.130	0.099	0.059	0.057	0.036	0.028	0.028	0.032	0.038	0.061	0.084	0.074	0.130		
Mooroolbark	Average	0.021	0.025	0.019	0.016	0.017	0.012	0.016	0.018	0.022	0.022	0.024	0.023	0.019		
	Data Recovery %	94	94	95	94	95	94	95	94	95	95	95	95	95		
	No. of Exceedences	0	0	0	0	0	0	0	0	0	0	0	0	0		
	Maximum	0.082	0.084	0.068	0.053	0.035	0.035	0.032	0.039	0.043	0.053	0.065	0.068	0.084		
Region Summary	Average	0.023	0.027	0.019	0.014	0.015	0.012	0.015	0.017	0.021	0.022	0.023	0.023	0.019		
Data Recovery %	92	87	95	94	93	93	93	95	95	94	95	93	93			
Maximum	0.130	0.099	0.071	0.059	0.040	0.037	0.034	0.043	0.061	0.084	0.077	0.077	0.130			
WEST	Altona North	Average	0.022	0.026	0.019	0.013	0.016	0.018	0.017	0.018	0.022	0.025	0.027	0.027	0.021	
		Data Recovery %	94	95	94	83	95	95	92	95	95	95	86	95	93	
		No. of Exceedences	1	0	0	0	0	0	0	0	0	0	0	0	1	
		Maximum	0.116	0.097	0.060	0.038	0.040	0.038	0.035	0.036	0.043	0.058	0.080	0.078	0.116	
	Deer Park	Average							54	0.016	0.017	0.019	0.023	0.023	0.023	
		Data Recovery %							0	95	84	82	95	95	83	
		No. of Exceedences							0	0	0	0	0	0	0	
		Maximum							0.030	0.031	0.040	0.057	0.074	0.072	0.049	
	Footscray	Average	0.019	0.022	0.017	0.013	0.015	0.014	0.015	0.016	0.019	0.021	0.022	0.021	0.018	
		Data Recovery %	95	96	95	95	95	95	95	94	95	95	94	92	95	
		No. of Exceedences	1	0	0	0	0	0	0	0	0	0	0	0	1	
		Maximum	0.127	0.067	0.059	0.039	0.036	0.032	0.034	0.033	0.041	0.055	0.075	0.074	0.127	
	Melton	Average	0.024	0.028	0.022	0.019	0.020	0.020	0.021	0.020	0.022	0.024	0.028	0.028	0.023	
		Data Recovery %	90	96	95	95	95	95	79	93	95	95	95	11	86	
No. of Exceedences		0	0	0	0	0	0	0	0	0	0	0	0	0		
Maximum		0.085	0.080	0.070	0.041	0.040	0.034	0.035	0.038	0.040	0.056	0.077	0.085	0.085		
Pt. Cook	Average	0.020	0.024	0.020	0.019	0.020	0.023	0.022	0.024	0.027	0.029	0.030	0.024	0.023		
	Data Recovery %	93	95	95	94	95	95	94	95	95	95	93	95	95		
	No. of Exceedences	0	0	0	0	0	0	0	0	0	0	0	0	0		
	Maximum	0.095	0.076	0.062	0.047	0.042	0.038	0.037	0.040	0.044	0.062	0.076	0.067	0.095		
Region Summary	Average	0.021	0.025	0.019	0.016	0.018	0.019	0.018	0.019	0.022	0.025	0.026	0.024	0.021		
Data Recovery %	93	95	95	92	95	87	91	92	93	95	93	75	91			
Maximum	0.127	0.097	0.070	0.047	0.042	0.038	0.037	0.040	0.044	0.062	0.080	0.078	0.127			
GEELONG	Geelong South	Average	0.020	0.023	0.019	0.017	0.015	0.017	0.017	0.020	0.024	0.026	0.026	0.024	0.021	
		Data Recovery %	95	95	96	94	94	95	95	95	95	95	95	95	95	
		No. of Exceedences	0	0	0	0	0	0	0	0	0	0	0	0	0	
		Maximum	0.088	0.063	0.052	0.046	0.035	0.032	0.034	0.038	0.041	0.057	0.082	0.072	0.088	
	Point Henry	Average	0.017	0.020	0.017	0.016	0.015	0.017	0.017	0.019	0.021	0.021	0.021	0.019	0.018	
		Data Recovery %	95	95	96	95	95	96	96	95	95	95	95	95	96	
No. of Exceedences		1	0	0	0	0	0	0	0	0	0	0	0	1		
Maximum		0.101	0.067	0.051	0.042	0.031	0.029	0.032	0.030	0.033	0.046	0.078	0.059	0.101		
Region Summary	Average	0.019	0.022	0.018	0.016	0.015	0.017	0.017	0.019	0.022	0.024	0.024	0.022	0.019		
Data Recovery %	95	95	96	95	94	96	95	95	95	95	95	95	95			
Maximum	0.101	0.067	0.052	0.046	0.035	0.032	0.034	0.038	0.041	0.057	0.082	0.072	0.101			
LATROBE VALLEY	Moe	Average	0.020	0.022	0.018	0.016	0.015	0.019	0.019	0.021	0.022	0.023	0.022	0.019	0.019	
		Data Recovery %	96	95	91	96	96	91	87	96	95	96	95	96	94	
		No. of Exceedences	0	0	0	0	0	0	0	0	0	0	0	0	0	
		Maximum	0.099	0.073	0.051	0.045	0.028	0.039	0.037	0.042	0.035	0.042	0.062	0.068	0.099	
	Traralgon	Average	0.020	0.022	0.017	0.015	0.014	0.014	0.015	0.017	0.018	0.020	0.019	0.018	0.017	
		Data Recovery %	96	95	96	90	96	93	95	96	95	96	96	95	95	
No. of Exceedences		0	0	0	0	0	0	0	0	0	0	0	0	0		
Maximum		0.094	0.070	0.051	0.056	0.029	0.032	0.032	0.039	0.034	0.037	0.053	0.056	0.094		
Region Summary	Average	0.020	0.022	0.017	0.016	0.014	0.014	0.017	0.019	0.020	0.021	0.021	0.019	0.018		
Data Recovery %	96	95	93	93	96	92	91	96	95	96	95	96	94			
Maximum	0.099	0.073	0.051	0.056	0.029	0.039	0.037	0.042	0.035	0.042	0.062	0.068	0.099			
OTHER RURAL	Wangaratta	Average	0.027	0.027	0.018	0.015	0.011	0.013	0.013	0.014	0.019	0.024	0.028	0.028	0.019	
		Data Recovery %	94	95	95	95	95	95	94	95	95	95	95	38	90	
		No. of Exceedences	0	0	0	0	0	0	0	0	0	0	0	0	0	
		Maximum	0.087	0.062	0.057	0.053	0.036	0.031	0.032	0.034	0.047	0.059	0.077	0.087		
Warrnambool	Average	0.021	0.022	0.021	0.023	0.021	0.026	0.026	0.027	0.028	0.027			0.024		
	Data Recovery %	94	95	94	92	95	95	95	95	95	91			78		
	No. of Exceedences	0	0	0	0	0	0	0	0	0	0			0		
	Maximum	0.060	0.053	0.042	0.041	0.035	0.036	0.038	0.041	0.038	0.042			0.060		

Note: Monthly maxima and averages for individual stations are not reported if data recovery is <75% (a maximum is recorded, however, if there has been an exceedence of a policy object)

4-Hour Ozone			Policy Objective = 0.08 ppm												
Region	Station	4 Hour Average (ppm)	Jan	Feb	Mar	Apr	May	Jun	Jul	Aug	Sep	Oct	Nov	Dec	Annual
EAST	Alphington	Maximum	0.115	0.070	0.060	0.035	0.029	0.033	0.030	0.038	0.038	0.051	0.067	0.062	0.115
		No. of Exceedences	1	0	0	0	0	0	0	0	0	0	0	0	0
	Box.Hill	Maximum	0.111		0.063	0.054	0.038	0.032	0.030	0.036	0.039	0.056	0.074	0.073	0.111
		No. of Exceedences	1	0	0	0	0	0	0	0	0	0	0	0	0
	Brighton	Maximum	0.111	0.069	0.056	0.043	0.038	0.035	0.034	0.035	0.039	0.056	0.079	0.076	0.111
		No. of Exceedences	1	0	0	0	0	0	0	0	0	0	0	0	0
	Dandenong	Maximum	0.106	0.061	0.066	0.040	0.036	0.033	0.032	0.030	0.035	0.046	0.073	0.073	0.106
		No. of Exceedences	1	0	0	0	0	0	0	0	0	0	0	0	0
Macleod	Maximum	0.121	0.084	0.053	0.052	0.033	0.027	0.028	0.031	0.037	0.060	0.077	0.073	0.121	
	No. of Exceedences	1	1	0	0	0	0	0	0	0	0	0	0	0	2
Mooroolbark	Maximum	0.074	0.077	0.062	0.041	0.034	0.035	0.031	0.038	0.042	0.052	0.063	0.066	0.077	
	No. of Exceedences	0	0	0	0	0	0	0	0	0	0	0	0	0	0
	Region Summary	Maximum	0.121	0.084	0.066	0.054	0.038	0.035	0.034	0.038	0.042	0.060	0.079	0.076	0.121
WEST	Altona North	Maximum	0.109	0.080	0.057	0.036	0.037	0.036	0.034	0.036	0.041	0.057	0.074	0.076	0.109
		No. of Exceedences	1	0	0	0	0	0	0	0	0	0	0	0	0
	Deer Park	Maximum							0.029	0.030	0.038	0.056	0.073	0.071	0.073
		No. of Exceedences							0	0	0	0	0	0	0
	Footscray	Maximum	0.113	0.060	0.052	0.038	0.035	0.030	0.033	0.033	0.038	0.054	0.071	0.072	0.113
		No. of Exceedences	1	0	0	0	0	0	0	0	0	0	0	0	0
	Melton	Maximum	0.080	0.073	0.066	0.040	0.039	0.033	0.035	0.038	0.038	0.054	0.075		0.080
		No. of Exceedences	0	0	0	0	0	0	0	0	0	0	0	0	0
Pt.Cook	Maximum	0.086	0.069	0.056	0.042	0.040	0.037	0.037	0.039	0.043	0.060	0.072	0.066	0.086	
	No. of Exceedences	1	0	0	0	0	0	0	0	0	0	0	0	0	1
	Region Summary	Maximum	0.113	0.080	0.066	0.042	0.040	0.037	0.037	0.039	0.043	0.060	0.075	0.076	0.113
GEELONG	Geelong South	Maximum	0.076	0.062	0.049	0.044	0.030	0.031	0.033	0.036	0.040	0.054	0.073	0.067	0.076
		No. of Exceedences	0	0	0	0	0	0	0	0	0	0	0	0	0
	Point.Henry	Maximum	0.085	0.058	0.049	0.036	0.029	0.028	0.031	0.030	0.032	0.044	0.065	0.059	0.085
No. of Exceedences		1	0	0	0	0	0	0	0	0	0	0	0	0	1
	Region Summary	Maximum	0.085	0.062	0.049	0.044	0.030	0.031	0.033	0.036	0.040	0.054	0.073	0.067	0.085
LATROBE VALLEY	Moe	Maximum	0.089	0.068	0.045	0.043	0.028	0.038	0.036	0.040	0.034	0.041	0.059	0.060	0.089
		No. of Exceedences	1	0	0	0	0	0	0	0	0	0	0	0	0
	Traralgon	Maximum	0.082	0.060	0.045	0.052	0.028	0.032	0.030	0.038	0.034	0.037	0.050	0.052	0.082
No. of Exceedences		1	0	0	0	0	0	0	0	0	0	0	0	0	1
	Region Summary	Maximum	0.089	0.068	0.045	0.052	0.028	0.038	0.036	0.040	0.034	0.041	0.059	0.060	0.089
OTHER RURAL	Wangaratta	Maximum	0.084	0.058	0.055	0.049	0.033	0.030	0.030	0.033	0.046	0.058	0.076		0.084
		No. of Exceedences	1	0	0	0	0	0	0	0	0	0	0		0
	Warrnambool	Maximum	0.054	0.048	0.041	0.040	0.034	0.036	0.038	0.039	0.037	0.041			0.054
No. of Exceedences		0	0	0	0	0	0	0	0	0	0			0	0

Note: Monthly maxima for individual stations are not reported if data recovery is <75% (a maximum is recorded, however, if there has been an exceedence of a policy objective)

8-Hour Carbon Monoxide			Policy Objective = 9.0 ppm													
Region	Station	8 Hour Average (ppm)	Jan	Feb	Mar	Apr	May	Jun	Jul	Aug	Sep	Oct	Nov	Dec	Annual	
CITY	Richmond	Average	0.1	0.1	0.1	0.3	0.2	0.3	0.2	0.2	0.1	0.2	0.3	0.2	0.2	
		Data Recovery %	93	95	95	94	91	95	94	94	94	79	94	95	95	93
		Maximum	1.0	0.5	1.3	1.9	2.5	2.4	2.9	1.8	1.1	1.2	0.7	0.5	2.9	
	Region Summary	Average	0.1	0.1	0.1	0.3	0.2	0.3	0.2	0.2	0.1	0.2	0.3	0.2	0.2	0.2
	Data Recovery %	93	95	95	94	91	95	94	94	94	79	94	95	95	93	
	Maximum	1.0	0.5	1.3	1.9	2.5	2.4	2.9	1.8	1.1	1.2	0.7	0.5	2.9		
EAST	Alphington	Average	0.3	0.3	0.3	0.5	0.5	0.6	0.5	0.5	0.4	0.3	0.3	0.2	0.4	
		Data Recovery %	95	95	95	94	94	95	94	95	95	95	95	95	95	95
		Maximum	1.1	0.9	1.1	1.8	2.5	2.2	2.8	1.8	1.4	1.1	0.8	0.6	2.8	
	Box Hill	Average	0.3		0.2	0.4	0.3	0.5	0.3	0.3	0.3	0.2	0.3	0.2	0.1	0.3
		Data Recovery %	81	47	95	95	95	95	95	95	95	93	95	95	96	90
		Maximum	1.4		0.8	1.0	1.6	2.0	1.9	1.5	1.3	1.2	0.4	0.5	2.0	
	Mooroolbark	Average	0.1	0.1	0.1	0.2	0.2	0.4	0.3			0.1	0.1	0.0	0.0	0.2
		Data Recovery %	80	92	80	93	89	88	88		49	95	94	93	93	86
Maximum		2.7	0.6	0.6	1.8	1.8	2.9	2.2			0.7	0.5	0.3	0.2	2.9	
Region Summary	Average	0.2	0.2	0.2	0.4	0.3	0.5	0.4	0.3	0.2	0.2	0.2	0.1	0.1	0.3	
	Data Recovery %	85	78	90	94	93	93	93	93	80	94	95	94	94	90	
	Maximum	2.7	0.9	1.1	1.8	2.5	2.9	2.8	1.8	1.4	1.2	0.8	0.6	2.9		
WEST	Footscray	Average	0.2	0.2	0.2	0.4	0.2	0.3	0.3	0.3	0.2	0.2	0.2	0.2	0.2	
		Data Recovery %	94	96	95	95	95	95	95	95	94	95	95	94	95	95
		Maximum	1.2	0.7	0.7	1.2	1.1	1.6	2.5	1.3	0.8	0.7	0.6	0.4	2.5	
	Region Summary	Average	0.2	0.2	0.2	0.4	0.2	0.3	0.3	0.3	0.2	0.2	0.2	0.2	0.2	0.2
	Data Recovery %	94	96	95	95	95	95	95	95	94	95	95	94	95	95	
	Maximum	1.2	0.7	0.7	1.2	1.1	1.6	2.5	1.3	0.8	0.7	0.6	0.4	2.5		
GEELONG	Geelong South	Average	0.0	0.0	0.0	0.1	0.2	0.2	0.3	0.3	0.2	0.2	0.2	0.2	0.2	
		Data Recovery %	95	95	96	94	94	95	95	95	95	95	92	95	95	95
		Maximum	0.4	0.2	0.4	0.3	1.3	1.0	1.9	0.8	1.1	0.6	0.6	0.5	1.9	
	Region Summary	Average	0.0	0.0	0.0	0.1	0.2	0.2	0.3	0.3	0.2	0.2	0.2	0.2	0.2	0.2
	Data Recovery %	95	95	96	94	94	95	95	95	95	95	92	95	95	95	
	Maximum	0.4	0.2	0.4	0.3	1.3	1.0	1.9	0.8	1.1	0.6	0.6	0.5	1.9		

Note: Monthly maxima and averages for individual stations are not reported if data recovery is <75% (a maximum is recorded, however, if there has been an exceedence of a policy objective)

1-Hour Nitrogen Dioxide			Policy Objective = 0.12 ppm													
Region	Station	1 Hour Average (ppm)	Jan	Feb	Mar	Apr	May	Jun	Jul	Aug	Sep	Oct	Nov	Dec	Annual	
CITY	Richmond	Average	0.009	0.011	0.012	0.016	0.014	0.019	0.016	0.017	0.014	0.012		0.007	0.013	
		Data Recovery %	94	95	95	95	92	95	95	95	95	95	94	59	95	92
		Maximum	0.033	0.036	0.049	0.046	0.038	0.049	0.047	0.045	0.045	0.041			0.040	0.049
	Region Summary	Average	0.009	0.011	0.012	0.016	0.014	0.019	0.016	0.017	0.014	0.012		0.007	0.013	
	Data Recovery %	94	95	95	95	92	95	95	95	95	95	94	59	95	92	
	Maximum	0.033	0.036	0.049	0.046	0.038	0.049	0.047	0.045	0.045	0.041			0.040	0.049	
EAST	Alphington	Average	0.006	0.008	0.009	0.012	0.012	0.017	0.016	0.015	0.013	0.011	0.011	0.008	0.011	
		Data Recovery %	95	95	95	94	94	95	94	95	95	95	95	95	95	95
		Maximum	0.028	0.027	0.045	0.052	0.040	0.050	0.035	0.038	0.045	0.039	0.050	0.046	0.046	0.052
	Box Hill	Average			0.010	0.014	0.011	0.016	0.012	0.012	0.009	0.009	0.009	0.007	0.011	
		Data Recovery %	69	47	95	95	95	93	95	95	77	95	95	95	96	88
		Maximum			0.034	0.047	0.034	0.041	0.031	0.036	0.031	0.036	0.035	0.036	0.047	
	Brighton	Average	0.006	0.006	0.007	0.012	0.011	0.011	0.011	0.011	0.012	0.010	0.008	0.008	0.007	0.009
		Data Recovery %	94	95	94	95	95	95	94	95	95	93	95	95	96	95
		Maximum	0.030	0.032	0.041	0.037	0.033	0.041	0.038	0.041	0.037	0.037	0.048	0.028	0.048	0.048
	Dandenong	Average	0.007	0.009	0.010	0.015	0.011	0.015	0.013	0.013	0.013	0.010	0.009	0.009	0.007	0.011
		Data Recovery %	95	95	96	95	95	95	94	94	95	95	95	95	96	95
		Maximum	0.037	0.035	0.035	0.044	0.031	0.044	0.053	0.038	0.036	0.041	0.048	0.036	0.036	0.053
Mooroolbark	Average	0.004	0.006	0.007	0.009	0.008	0.011	0.010	0.008	0.008	0.006	0.007	0.006	0.005	0.007	
	Data Recovery %	90	87	92	93	95	94	95	95	95	95	95	95	95	93	
	Maximum	0.032	0.043	0.031	0.032	0.029	0.032	0.030	0.032	0.032	0.030	0.032	0.037	0.031	0.043	
	Region Summary	Average	0.008	0.008	0.009	0.012	0.010	0.014	0.012	0.012	0.010	0.009	0.009	0.007	0.010	
	Data Recovery %	89	84	94	94	95	94	94	95	91	95	95	95	95	93	
	Maximum	0.037	0.043	0.049	0.052	0.040	0.050	0.053	0.045	0.045	0.041	0.050	0.046	0.053		
WEST	Altona North	Average	0.007	0.008	0.009	0.014	0.013	0.012	0.013	0.013	0.011	0.008	0.007	0.007	0.010	
		Data Recovery %	94	95	94	94	95	95	92	95	95	95	95	95	95	95
		Maximum	0.050	0.056	0.037	0.038	0.036	0.035	0.035	0.044	0.038	0.040	0.051	0.036	0.056	
	Deer Park	Average							52	0.009	0.009	0.008	0.007	0.009	0.007	
		Data Recovery %								95	84	94	95	95	94	51
		Maximum								0.039	0.039	0.040	0.040	0.041	0.045	
	Footscray	Average	0.009	0.011	0.011	0.017	0.013	0.016	0.015	0.014	0.012	0.010	0.012	0.009	0.012	
		Data Recovery %	94	96	95	95	95	95	95	94	95	95	95	94	95	95
		Maximum	0.050	0.045	0.037	0.045	0.037	0.051	0.043	0.038	0.041	0.045	0.056	0.052	0.056	
	Pt. Cook	Average	0.003	0.003	0.004	0.007	0.006	0.004	0.005	0.005	0.005	0.004	0.001	0.003	0.004	0.004
		Data Recovery %	86	95	95	94	95	95	94	95	95	95	78	96	93	
		Maximum	0.030	0.046	0.040	0.040	0.027	0.028	0.032	0.036	0.026	0.032	0.040	0.029	0.046	
	Region Summary	Average	0.006	0.008	0.008	0.013	0.011	0.010	0.011	0.010	0.009	0.007	0.008	0.007	0.009	
	Data Recovery %	91	95	95	94	95	84	94	92	95	95	91	95	93		
	Maximum	0.050	0.056	0.040	0.045	0.037	0.051	0.043	0.044	0.041	0.045	0.056	0.052	0.056		
GEELONG	Geelong South	Average	0.004	0.004	0.006	0.009	0.009	0.008	0.009	0.007	0.006	0.005	0.004	0.004	0.006	
		Data Recovery %	95	95	96	94	94	95	95	95	95	95	95	95	95	
		Maximum	0.023	0.037	0.032	0.029	0.033	0.028	0.032	0.032	0.029	0.027	0.034	0.022	0.037	
	Region Summary	Average	0.004	0.004	0.006	0.009	0.009	0.008	0.009	0.007	0.006	0.005	0.004	0.004	0.006	
	Data Recovery %	95	95	96	94	94	95	95	95	95	95	95	95	95		
	Maximum	0.023	0.037	0.032	0.029	0.033	0.028	0.032	0.032	0.029	0.027	0.034	0.022	0.037		
LATROBE VALLEY	Moe	Average	0.007	0.007	0.006	0.007	0.008	0.009	0.008	0.006	0.006	0.005	0.005	0.005	0.007	
		Data Recovery %	96	95	96	95	96	91	87	96	95	95	95	96	94	
		Maximum	0.031	0.028	0.025	0.028	0.032	0.026	0.025	0.025	0.026	0.022	0.023	0.024	0.032	
	Traralgon	Average	0.005	0.006	0.006	0.008	0.008	0.009	0.009	0.008	0.008	0.006	0.004	0.005	0.003	0.006
		Data Recovery %	96	95	96	87	95	89	95	96	96	95	94	96	95	94
		Maximum	0.032	0.027	0.026	0.038	0.031	0.027	0.026	0.027	0.025	0.025	0.027	0.021	0.038	
	Region Summary	Average	0.006	0.006	0.006	0.008	0.008	0.009	0.008	0.007	0.006	0.004	0.005	0.004	0.007	
	Data Recovery %	96	95	96	91	95	90	91	96	95	95	95	95	94		
	Maximum	0.032	0.028	0.026	0.038	0.032	0.027	0.026	0.027	0.026	0.025	0.027	0.024	0.038		

Note: Monthly maxima and averages for individual stations are not reported if data recovery is <75% (a maximum is recorded, however, if there has been an exceedance of a policy objective).

1-Hour Sulfur Dioxide			Policy Objective = 0.20 ppm													
Region	Station	1 Hour Average (ppm)	Jan	Feb	Mar	Apr	May	Jun	Jul	Aug	Sep	Oct	Nov	Dec	Annual	
EAST	Alphington	Average	0.000	0.001	0.001	0.001	0.001	0.001	0.001	0.001	0.000	0.000	0.000	0.000	0.001	
		Data Recovery %	92	90	95	94	94	95	94	95	88	91	91	91	91	93
		Maximum	0.006	0.007	0.011	0.008	0.022	0.010	0.010	0.006	0.004	0.005	0.006	0.006	0.006	0.022
	Box Hill	Average	0.000	0.000	0.000	0.001	0.000	0.001	0.001	0.001	0.001	0.000	0.000	0.000	0.000	0.000
		Data Recovery %	81	45	90	90	90	90	91	92	90	90	89	91	86	
		Maximum	0.006	0.007	0.007	0.007	0.004	0.008	0.006	0.005	0.007	0.007	0.004	0.006	0.008	
	Region Summary		Average	0.000	0.001	0.001	0.001	0.001	0.001	0.001	0.001	0.000	0.000	0.000	0.000	0.001
			Data Recovery %	86	68	92	92	92	93	92	93	89	90	90	91	89
			Maximum	0.006	0.011	0.008	0.022	0.010	0.010	0.006	0.007	0.007	0.006	0.006	0.006	0.022
WEST	Altona North	Average	0.001	0.001	0.002	0.002	0.001	0.002	0.002	0.001	0.001	0.002	0.001	0.002	0.001	
		Data Recovery %	94	91	90	91	95	80	79	91	91	90	90	91	89	
		Maximum	0.029	0.018	0.039	0.026	0.012	0.027	0.030	0.019	0.027	0.036	0.031	0.037	0.039	
	Footscray	Average	0.001	0.002	0.001	0.000	0.000	0.001	0.001	0.001	0.001	0.001	0.001	0.002	0.001	
		Data Recovery %	90	91	90	66	93	95	95	94	95	95	89	91	90	
		Maximum	0.026	0.047	0.014	0.000	0.009	0.014	0.022	0.017	0.016	0.012	0.027	0.021	0.047	
	Region Summary		Average	0.001	0.001	0.002	0.001	0.001	0.002	0.001	0.001	0.001	0.001	0.002	0.002	0.001
			Data Recovery %	92	91	90	79	94	88	87	92	93	93	90	91	90
			Maximum	0.029	0.047	0.039	0.026	0.012	0.027	0.030	0.019	0.027	0.036	0.031	0.037	0.047
GEELONG	Geelong South	Average	0.001	0.001	0.001	0.001	0.001	0.000	0.001	0.001	0.001	0.001	0.001	0.001	0.001	
		Data Recovery %	91	91	92	90	90	91	91	90	90	90	91	88	90	
		Maximum	0.021	0.083	0.028	0.029	0.022	0.009	0.015	0.030	0.037	0.016	0.067	0.034	0.083	
	Region Summary		Average	0.001	0.001	0.001	0.001	0.001	0.001	0.001	0.001	0.001	0.001	0.001	0.001	0.001
			Data Recovery %	91	91	91	84	92	89	89	91	92	92	90	90	90
			Maximum	0.029	0.083	0.039	0.029	0.022	0.027	0.030	0.030	0.037	0.036	0.067	0.037	0.083
	LATROBE VALLEY	Moe	Average	0.002	0.003	0.002	0.002	0.001	0.001	0.001	0.001	0.001	0.001	0.001	0.001	0.001
			Data Recovery %	96	94	96	96	96	91	87	96	95	95	95	96	94
			Maximum	0.014	0.023	0.037	0.014	0.016	0.015	0.008	0.008	0.030	0.066	0.048	0.014	0.066
Traralgon		Average	0.002	0.002	0.003	0.002	0.004	0.005		0.001	0.002	0.002	0.002	0.001	0.001	
		Data Recovery %	95	95	96	90	95	89	68	96	95	96	96	95	92	
		Maximum	0.092	0.027	0.044	0.037	0.024	0.023		0.014	0.046	0.088	0.025	0.012	0.092	
Region Summary		Average	0.002	0.002	0.002	0.002	0.003	0.003	0.002	0.001	0.002	0.002	0.002	0.001	0.002	
		Data Recovery %	95	95	96	93	95	90	77	96	95	95	95	93		
		Maximum	0.092	0.027	0.044	0.037	0.024	0.023	0.008	0.014	0.046	0.088	0.048	0.014	0.092	

Note: Monthly maxima and averages for individual stations are not reported if data recovery is <75% (a maximum is recorded, however, if there has been an exceedance of a policy objective)

24-Hour Sulfur Dioxide			Policy Objective = 0.08 ppm													
Region	Station	24 Hour Average (ppm)	Jan	Feb	Mar	Apr	May	Jun	Jul	Aug	Sep	Oct	Nov	Dec	Annual	
EAST	Alphington	Maximum	0.001	0.002	0.003	0.003	0.003	0.004	0.003	0.003	0.001	0.001	0.001	0.002	0.004	
	Box Hill	Maximum	0.001		0.002	0.002	0.002	0.002	0.002	0.002	0.001	0.005	0.002	0.002	0.005	
	Region Summary		Maximum	0.001	0.002	0.003	0.003	0.003	0.004	0.003	0.003	0.001	0.005	0.002	0.002	0.005
WEST	Altona North	Maximum	0.004	0.005	0.013	0.006	0.003	0.005	0.008	0.003	0.004	0.011	0.006	0.011	0.013	
	Footscray	Maximum	0.004	0.005	0.003	0.003	0.003	0.004	0.005	0.003	0.004	0.002	0.005	0.004	0.005	
	Region Summary		Maximum	0.004	0.005	0.013	0.006	0.003	0.005	0.008	0.003	0.004	0.011	0.006	0.011	0.013
GEELONG	Geelong South	Maximum	0.003	0.009	0.003	0.003	0.003	0.002	0.002	0.003	0.003	0.002	0.007	0.004	0.009	
	Region Summary		Maximum	0.003	0.009	0.003	0.003	0.003	0.002	0.002	0.003	0.003	0.002	0.007	0.004	0.009
	LATROBE VALLEY	Moe	Maximum	0.005	0.006	0.007	0.005	0.004	0.005	0.002	0.002	0.007	0.010	0.007	0.004	0.010
Traralgon		Maximum	0.008	0.005	0.006	0.010	0.007	0.011		0.006	0.006	0.010	0.008	0.003	0.011	
Region Summary		Maximum	0.008	0.006	0.007	0.010	0.007	0.011	0.002	0.006	0.007	0.010	0.008	0.004	0.011	

Note: Monthly maxima for individual stations are not reported if data recovery is <75% (a maximum is recorded, however, if there has been an exceedance of a policy objective)